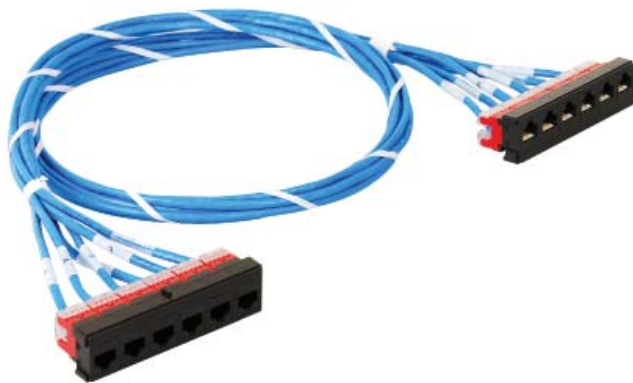


HPS

888.ASK.4.ICC | 888.275.4422

Pre-Terminated Assemblies

Premium Products | Proven Performance | Competitive Prices



## CX | HiPerLink Cassette-to-Cassette

- For installations between data racks
- Available in CAT 6 UTP and CAT 6A UTP/FTP cable
- CAT 6A FTP solution provides 360° shielded protection with 10G performance
- Exceeds EIA/TIA performance requirements
- CMP (Plenum) or CMR (Riser) rated cable
- Available in custom lengths up to 295 Ft.
- Factory terminated and 100% tested
- Includes test results



## CM | HiPerLink Cassette-to-Modular Connectors

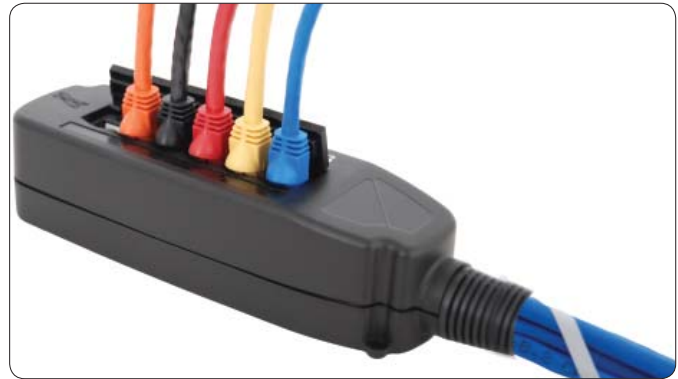
- For installations between cross-connects and workstations
- Available in CAT 6 UTP and CAT 6A UTP/FTP cable
- CAT 6A FTP solution provides 360° shielded protection with 10G performance
- Exceeds EIA/TIA performance requirements
- CMP (Plenum) or CMR (Riser) rated cable
- Available in custom lengths up to 295 Ft.
- Factory terminated and 100% tested
- Includes test results

### BUILD TO YOUR SPECIFICATIONS

Ask us how we can customize pre-terminated assemblies to your unique application. ICC's product specialists will work closely with you to make sure the assembly is built to the specifications.

- Cable Type
- Termination Type
- Assembly Length



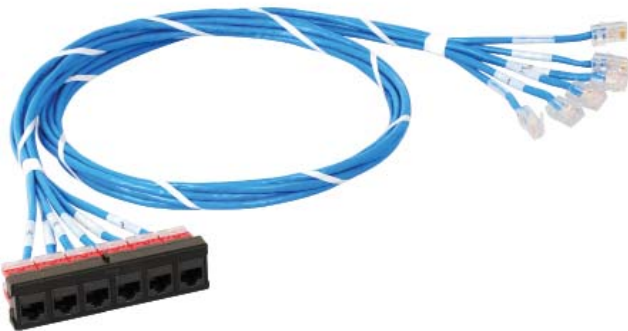


**CB | HiPerLink Cassette-to-Patch Box**

- For installations between cross-connects and open work areas
- Available in CAT 6 UTP and CAT 6A UTP/FTP cable
- CAT 6A FTP solution provides 360° shielded protection with 10G performance
- Exceeds EIA/TIA performance requirements
- CMP (Plenum) or CMR (Riser) rated cable
- Available in custom lengths up to 295 Ft.
- Factory terminated and 100% tested
- Includes test results

icc.com | csr@icc.com

Pre-Terminated Assemblies



**CP | HiPerLink Cassette-to-Modular Plugs**

- For installations between cross-connects
- Available in CAT 6 UTP and CAT 6A UTP/FTP cable
- CAT 6A FTP solution provides 360° shielded protection with 10G performance
- Exceeds EIA/TIA performance requirements
- CMP (Plenum) or CMR (Riser) rated cable
- Available in custom lengths up to 295 Ft.
- Factory terminated and 100% tested
- Includes test results

**Extended Bracket Panels**

Product #	Description
A. ICCMSFCMRP	Front, 3" Deep
B. ICCMSRCMRP	Rear, 5" Deep

- Provides cable support in front or back of patch panels
- No extra RMS needed



Premium Products | Proven Performance | Competitive Prices

## Plug and Play Fiber Optic Solutions

With ICC's pre-terminated fiber solutions, simply 'plug and play' fiber into any FTTx network architecture; data centers, network backbone or straight to the workstation.

### Plug and Play

- Install right out of the box with no hassle
- 10G Performance
- Exceeds TIA 568 standards
- Superior Reliability
- Low Insertion Loss of <0.5dB
- Built-to-Order
- Cassette-to-Cassette, Cassette-to-Connectors, Cassette-to-Workstation

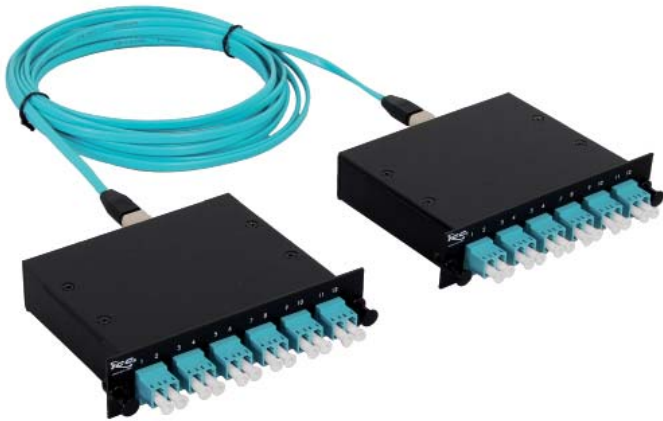


888.ASK.4.ICC | 888.275.4422

Pre-Terminated Assemblies

Premium Products | Proven Performance | Competitive Prices

70



### FCC | MPO HiPerLink Cassette-to-Cassettes

- For installations between data racks
- Wired straight through (1-1)
- OM3/10G laser optimized, MPO Cassettes are backward compatible with 50/125µm (OM2) system requirements

### Rack Mount Installation

#### SIMPLY 'PLUG AND PLAY' FIBER INTO ANY FTTx NETWORK!

ICC is the preferred choice for data transfer between Telecommunication Rooms, Inner-Buildings, and Work Areas. It also serves as an integration point in Data Centers, Storage Area Networks, or Local Area Networks.

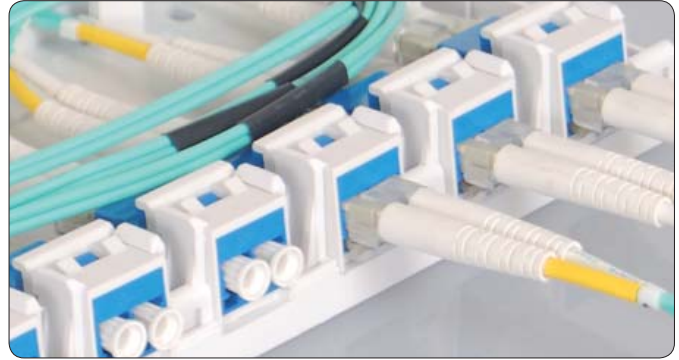
#### APPLICATIONS:

- Premise Backbone Cabling
- Consolidation Points
- Data Centers

#### FEATURES & BENEFITS:

- Ideal for small or large installations
- Simplified system design
- Reduces installation time and costs
- Flexible network configuration
- Installation does not require expert engineers or special tools

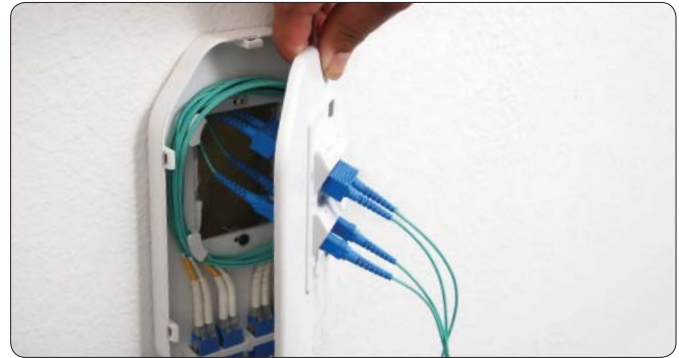




**FCN | MPO HiPerLink Cassette-to-Connectors**

- For installations between cross-connects
- Wired straight through (1-1)
- OM3/10G laser optimized, MPO Cassettes are backward compatible with 50/125µm (OM2) system requirements

icc.com | csr@icc.com



**FWA | MPO HiPerLink Cassette-to-Work Area Outlets**

- For installations between cross-connects and workstations
- Wired straight through (1-1)
- OM3/10G laser optimized, MPO Cassettes are backward compatible with 50/125µm (OM2) system requirements



**Work Area Outlets and Connector Installations**

**DEPLOY RELIABLE NETWORK SYSTEMS AND UPGRADES QUICKLY!**

ICC's Cassette-to-Work Areas Outlets solution is the preferred choice to deploy fiber-to-the-desk (FTTD) in high bandwidth network environments with data connections such as streaming video, computer animation, scientific and medical applications.

**APPLICATIONS:**

- Fiber-to-the-Desk (FTTD)
- Rapid Network Deployments
- High-Density Networks

**FEATURES & BENEFITS:**

- Perfect solution for high bandwidth workstations
- Quick and error-free installations
- No splicing required
- Factory terminated and tested
- Provides secure network connection

Pre-Terminated Assemblies

PremiumProducts | ProvenPerformance | CompetitivePrices