



CAT6

CAT 6 | Patch Panels

Product #	Description	15
ICMPP02460	24-Port, RJ-45, 110-Type, T568A/B Wiring, 1 RMS	10
ICMPP04860	48-Port, RJ-45, 110-Type, T568A/B Wiring, 2 RMS (PICTURED)	

- Exceeds ANSI/TIA-568 Category 6 standard
- Rear 110-Type IDC termination
- Front write-on labeling area or optional color icons for identification
- Cable tie mounts for cable management
- 19" EIA rack mount width

See page 29 for optional Rear Cable Management Bar (ICMPP25CMB)
See page 31 for Termination Caps
1 RMS (Rack Mount Space) = 1.75"



CAT5e

CAT 5e | Patch Panels

Product #	Description	15
ICMPP0245E	24-Port, RJ-45, 110-Type, T568A/B Wiring, 1 RMS	10
ICMPP0485E	48-Port, RJ-45, 110-Type, T568A/B Wiring, 2 RMS (PICTURED)	

- Exceeds ANSI/TIA-568 Category 5e standard
- Rear 110-Type IDC termination
- Front write-on labeling area or optional color icons for identification
- Cable tie mounts for cable management
- 19" EIA rack mount width

See page 29 for optional Rear Cable Management Bar (ICMPP25CMB)
See page 31 for Termination Caps
1 RMS (Rack Mount Space) = 1.75"



CAT6

CAT 6 | Vertical Patch Panel

Product #	Description	25
ICMPP12V60	12-Port, RJ-45, 110-Type, T568A/B Wiring	

- Exceeds ANSI/TIA-568 Category 6 standard
- Front write-on labeling area or optional color icons for identification
- Cable tie mounts for cable management
- Wall mountable, measures (3.32"W x 10"H x 2.35"D)
- Includes removable 89U universal mounting bracket

See page 31 for Termination Caps



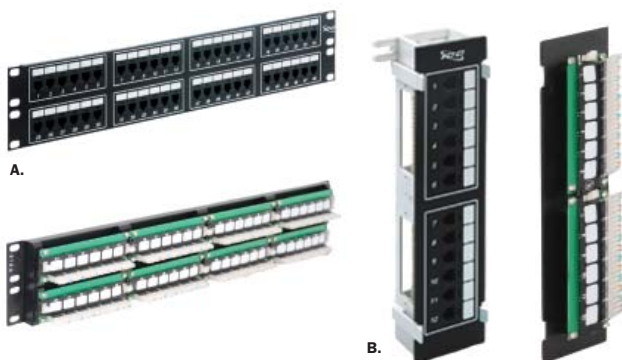
CAT5e

CAT 5e | Vertical Patch Panel

Product #	Description	25
ICMPP12V5E	12-Port, RJ-45, 110-Type, T568A/B Wiring	

- Exceeds ANSI/TIA-568 Category 5e standard
- Front write-on labeling area or optional color icons for identification
- Cable tie mounts for cable management
- Wall mountable, measures (3.32"W x 10"H x 2.35"D)
- Includes removable 89U universal mounting bracket

See page 31 for Termination Caps



Voice Grade CAT 3 | USOC Patch Panels

Product #	Description	15
ICMPP024U6	24-Port, RJ-11, USOC Wiring, 1 RMS	
A. ICMPP048U6	48-Port, RJ-11, USOC Wiring, 2 RMS (PICTURED)	

- Front write-on labeling area or optional color icons for identification
- 19" EIA rack mount width

B. ICMPP012U6	12-Port, RJ-11, USOC Wiring, Vertical (PICTURED)	25
---------------	--	----

- Front write-on labeling area or optional color icons for identification
- Wall mountable, measures (3.32"W x 10"H x 1.88"D)
- Includes removable 89D mounting bracket

See page 31 for Termination Caps
1 RMS (Rack Mount Space) = 1.75"

Need Color Icons?
Go to page 67

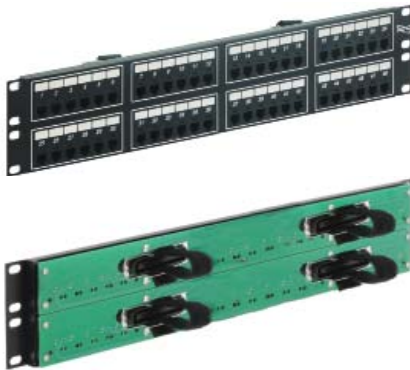


Voice Grade CAT 3 | Telco Patch Panels

Product #	Description	15
ICMPP24T2C	24-Port, RJ-45, 8P2C, 1 RMS, 1 Male Telco Connector	
ICMPP48T2C	48-Port, RJ-45, 8P2C, 2 RMS, 2 Male Telco Connectors (PICTURED)	

- Front write-on labeling area or optional color icons for identification
- Use 25-Pair Telco cable for quick installation
- 19" EIA rack mount width

1 RMS (Rack Mount Space) = 1.75"



Voice Grade CAT 3 | Telco Patch Panels

Product #	Description	15
ICMPP24T4C	24-Port, RJ-45, 8P4C, 1 RMS, 1 Male Telco Connector	
ICMPP48T4C	48-Port, RJ-45, 8P4C, 2 RMS, 2 Male Telco Connectors (PICTURED)	

- Front write-on labeling area or optional color icons for identification
- Use 25-Pair Telco cable for quick installation
- 19" EIA rack mount width

1 RMS (Rack Mount Space) = 1.75"



Voice Grade CAT 3 | Telco Patch Panels

Product #	Description	15
ICMPP024T2	24-Port, RJ-11, 6P2C, 1 RMS, 1 Male Telco Connector	
ICMPP048T2	48-Port, RJ-11, 6P2C, 2 RMS, 2 Male Telco Connectors (PICTURED)	10

- Front write-on labeling area or optional color icons for identification
- Use 25-Pair Telco cable for quick installation
- 19" EIA rack mount width

1 RMS (Rack Mount Space) = 1.75"



Voice Grade CAT 3 | Telco Patch Panels

Product #	Description	15
ICMPP024T4	24-Port, RJ-11, 6P4C, 1 RMS, 2 Male Telco Connectors	
ICMPP048T4	48-Port, RJ-11, 6P4C, 2 RMS, 4 Male Telco Connectors (PICTURED)	10

- Front write-on labeling area or optional color icons for identification
- Use 25-Pair Telco cable for quick installation
- 19" EIA rack mount width

1 RMS (Rack Mount Space) = 1.75"

Need 25-Pair Telco Cables?
Go to page 47

Need Color Icons?
Go to page 67

Standard Color Codes for 25-Pair UTP Cables

Pairs	1	2	3	4	5	6	7	8	9	10	11	12	13	14	15	16	17	18	19	20	21	22	23	24	25
Color Codes																									
66 or 110 Pos.	1 2	3 4	5 6	7 8	9 10	11 12	13 14	15 16	17 18	19 20	21 22	23 24	25 26	27 28	29 30	31 32	33 34	35 36	37 38	39 40	41 42	43 44	45 46	47 48	49 50
2 Cond. USOC	4 3	4 3	4 3	4 3	4 3	4 3	4 3	4 3	4 3	4 3	4 3	4 3	4 3	4 3	4 3	4 3	4 3	4 3	4 3	4 3	4 3	4 3	4 3	4 3	4 3
4 Cond. USOC	4 3	2 5	4 3	2 5	4 3	2 5	4 3	2 5	4 3	2 5	4 3	2 5	4 3	2 5	4 3	2 5	4 3	2 5	4 3	2 5	4 3	2 5	4 3	2 5	---
6 Cond. USOC	4 3	2 5	1 6	4 3	2 5	1 6	4 3	2 5	1 6	4 3	2 5	1 6	4 3	2 5	1 6	4 3	2 5	1 6	4 3	2 5	1 6	4 3	2 5	1 6	---
T568A	5 4	3 6	1 2	7 8	5 4	3 6	1 2	7 8	5 4	3 6	1 2	7 8	5 4	3 6	1 2	7 8	5 4	3 6	1 2	7 8	5 4	3 6	1 2	7 8	---
T568B WECO	5 4	1 2	3 6	7 8	5 4	1 2	3 6	7 8	5 4	1 2	3 6	7 8	5 4	1 2	3 6	7 8	5 4	1 2	3 6	7 8	5 4	1 2	3 6	7 8	---
50 Pin Pos.	26 1	27 2	28 3	29 4	30 5	31 6	32 7	33 8	34 9	35 10	36 11	37 12	38 13	39 14	40 15	41 16	42 17	43 18	44 19	45 20	46 21	47 22	48 23	49 24	50 25

1.



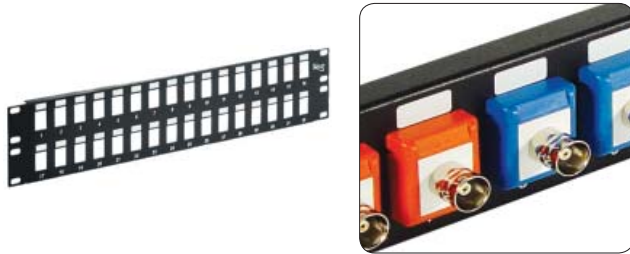
Multimedia Flush Mount | Blank Patch Panels

Product #	Description
IC107BP012	12-Port, Configurable, 1 RMS (EZ/HD)
A. IC107BP016	16-Port, Configurable, 1 RMS (EZ/HD)
IC107BP024	24-Port, Configurable, 2 RMS (EZ/HD)
IC107BP032	32-Port, Configurable, 2 RMS (EZ/HD)
B. IC107BP241	24-Port, Configurable, 1 RMS (HD Only)
IC107BP482	48-Port, Configurable, 2 RMS (HD Only)

- Front write-on labeling area for identification
- Customize with ICC modular connectors
- Pre-numbered ports for easy identification
- 19" EIA rack mount width

1 RMS (Rack Mount Space) = 1.75"

2.



Multimedia | Blank Patch Panels

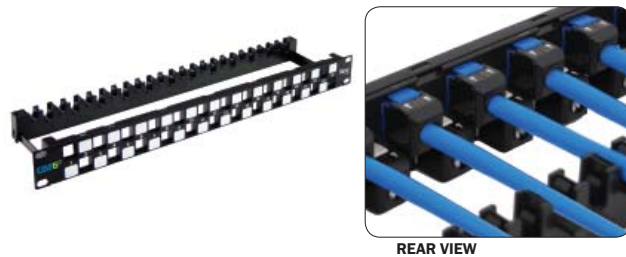
Product #	Description
IC107PP012	12-Port, Configurable, 1 RMS (EZ/HD)
IC107PP016	16-Port, Configurable, 1 RMS (EZ/HD)
IC107PP024	24-Port, Configurable, 2 RMS (EZ/HD)
IC107PP032	32-Port, Configurable, 2 RMS (EZ/HD) (PICTURED)

- Front write-on labeling area for identification
- Customize with ICC modular connectors
- Compatible with optional color ID caps
- 19" EIA rack mount width

See page 29 for Color ID Caps (IC107CICxx)

1 RMS (Rack Mount Space) = 1.75"

3.



CAT6[®] UTP Configurable CAT 6A | Blank Patch Panel

Product #	Description
IC107PPU6A	UTP, 24-Port Patch Panel, Unloaded, 1 RMS

- Front write-on labeling area for identification
- Compatible with 10G UTP connectors (IC1078GAxx)
- Staggered UTP port spacing reduces Alien Crosstalk (ANEXT)
- Includes rear cable management bar
- 19" EIA rack mount width

1 RMS (Rack Mount Space) = 1.75"

4.



CAT6[®] FTP Configurable CAT 6A | Blank Patch Panel

Product #	Description
IC107PPS6A	FTP, 24-Port Patch Panel, Unloaded, 1 RMS

- Front write-on labeling area for identification
- Shielding protection from EMI/RFI interferences
- Compatible with 10G FTP connector (IC1078S6A0)
- FTP reduces Alien Crosstalk (ANEXT)
- Pre-installed with grounding stud
- Includes rear cable management bar
- 19" EIA rack mount width

1 RMS (Rack Mount Space) = 1.75"

5.

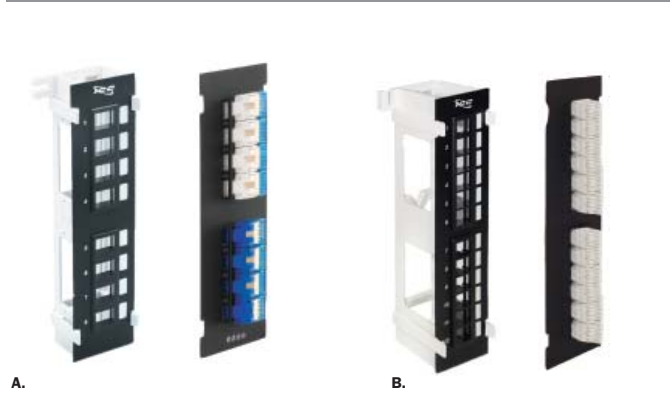


Shielded ScTP | Blank Patch Panels

Product #	Description
IC107PPS16	16-Port, Configurable, 1 RMS (PICTURED)
IC107PPS32	32-Port, Configurable, 2 RMS

- Front write-on labeling area for identification
- Shielding protection from EMI/RFI interferences
- Pre-installed with grounding stud
- Includes rear cable management bar
- 19" EIA rack mount width

1 RMS (Rack Mount Space) = 1.75"



Multimedia Flush Mount | Vertical Blank Patch Panels

- | Product # | Description |
|---------------|---|
| A. IC107BP8VB | 8-Port, Configurable, Flush Mount Style (EZ/HD) |
| B. IC107BP12V | 12-Port, Configurable (HD Only) |
- Customize with ICC modular connectors
 - Front write-on labeling area and pre-numbered ports for identification
 - Wall mountable and measures (3.32"W x 10"H x 1.88"D)
 - Includes removable 89D mounting bracket



Multimedia | Vertical Blank Patch Panel

- | Product # | Description |
|------------|--|
| IC107PP8VB | 8-Port, Configurable, Color ID Cap Style (EZ/HD) |
- Customize with ICC modular connectors
 - Front write-on labeling area for identification
 - Pre-numbered ports for identification
 - Compatible with optional color ID caps
 - Wall mountable and measures (3.32"W x 10"H x 1.88"D)
 - Includes removable 89D universal mounting bracket

See page 29 for Color ID Caps (IC107CICxx)

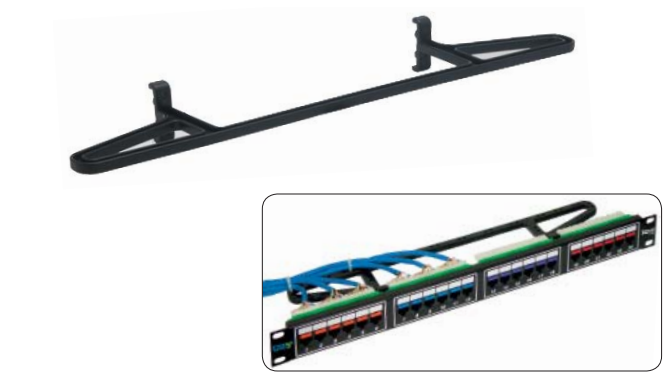


Blank Panels

Product #	Description	
ICCMSCMPB1	1.75"H x 19"W, 1 RMS	60
ICCMSCMPB2	3.50"H x 19"W, 2 RMS (PICTURED)	40
ICCMSCMPB3	5.25"H x 19"W, 3 RMS	30

- Fills empty spaces between mounted equipment
- Steel construction for durability

1 RMS (Rack Mount Space) = 1.75"



Cable Management Bar

- | Product # | Description | |
|------------|---------------------------|----|
| ICMPP25CMB | Rear Cable Management Bar | 40 |
- Mountable on the back of 110-Type patch panel for rear cable support
 - ABS plastic for durability



Wall Mounting Brackets

- | Product # | Description |
|---------------|-----------------------|
| A. ICMB89U0WH | Universal 89U Bracket |
| B. ICMB89D0WH | 89D Bracket |
- Compatible with vertical patch panels and 66 wiring blocks
 - Deeper cable channel
 - Compatible with vertical USOC, vertical blank patch panels



Color ID Caps

Product #	Description
IC107CICxx ¹	10 pcs/Pack

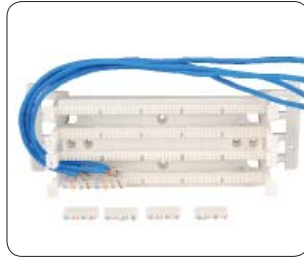
- Use color ID caps for a clean appearance and system administration

¹xx denotes color = AL-Almond, BK-Black, BL-Blue, GN-Green, GY-Gray, IV-Ivory, OR-Orange, PR-Purple, RD-Red, WH-White, YL-Yellow

1.



CAT6

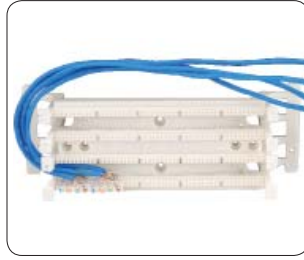


CAT 6 | 110 Wiring Kit

Product # *Description*
IC110WK966 96-Pair Wiring Kit, CAT 6

- Exceeds ANSI/TIA-568 Category 6 standards
- Includes 4-Pair connecting blocks, labels and holders

2.



With Feet | 110 Wiring Blocks

Product # *Description*
IC110WF100 100-Pair Base (PICTURED)
IC110WF300 300-Pair Base

- Feet for rear cable management
- Includes labels and holders
- Compatible with optional 3-Pair, 4-Pair, and 5-Pair connecting blocks

See page 31 for Connecting Blocks (IC110CBxPR)

3.



Without Feet | 110 Wiring Blocks

Product # *Description*
IC110NF100 100-Pair Base (PICTURED)
IC110NF300 300-Pair Base

- Includes labels and holders
- Compatible with optional 3-Pair, 4-Pair, and 5-Pair connecting blocks

See page 31 for Connecting Blocks (IC110CBxPR)

4.



Hinged | 110 Wiring Block

Product # *Description*
IC110WH100 100-Pair Base, Hinged (PATENTED)

- Includes labels and holders
- Hinged for rear cable access
- Left and right cable management channels

See page 31 for Connecting Blocks (IC110CBxPR)

5.

CAT6



Rack Mount | 110 Wiring Blocks

Product # *Description*
A. IC110PRK61 96-Pair, 1 RMS, CAT 6 Kit

- Exceeds ANSI/TIA-568 Category 6 standard
- Includes 4-Pair blocks, labels and holders
- 19" EIA rack mount width

IC110RM100 100-Pair Base, 1 RMS
B. IC110RM200 200-Pair Base, 2 RMS








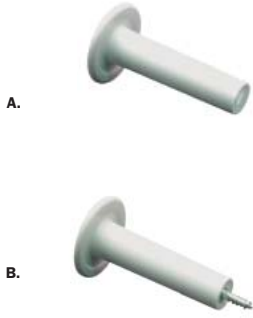


- Compatible with optional 3-Pair, 4-Pair, and 5-Pair connecting blocks
- Rear cable entry
- 19" EIA rack mount width

See page 31 for Connecting Blocks (IC110CBxPR)

1 RMS (Rack Mount Space) = 1.75"

A.

B.

 <p>CAT5^e CAT 5e 110 Wiring Kits</p> <table border="1"> <thead> <tr> <th>Product #</th> <th>Description</th> </tr> </thead> <tbody> <tr> <td>IC110W1004</td> <td>100-Pair Wiring Kit</td> </tr> <tr> <td>IC110W3004</td> <td>300-Pair Wiring Kit</td> </tr> <tr> <td>IC110H1004</td> <td>100-Pair Wiring Kit</td> </tr> </tbody> </table> <ul style="list-style-type: none"> Exceeds ANSI/TIA-568 CAT 5e standards Includes 4-Pair and 5-Pair connecting blocks, labels and holders 	Product #	Description	IC110W1004	100-Pair Wiring Kit	IC110W3004	300-Pair Wiring Kit	IC110H1004	100-Pair Wiring Kit	 <p>110 Termination Caps</p> <table border="1"> <thead> <tr> <th>Product #</th> <th>Description</th> </tr> </thead> <tbody> <tr> <td>IC110TC350</td> <td>3 Conductor, 110</td> </tr> <tr> <td>IC110TC450</td> <td>2-Pair, 110</td> </tr> <tr> <td>IC110TC460</td> <td>2-Pair, CAT 6</td> </tr> </tbody> </table> <ul style="list-style-type: none"> Secure and protect terminated wires Works with patch panels 50 pcs/Pack 	Product #	Description	IC110TC350	3 Conductor, 110	IC110TC450	2-Pair, 110	IC110TC460	2-Pair, CAT 6		
Product #	Description																		
IC110W1004	100-Pair Wiring Kit																		
IC110W3004	300-Pair Wiring Kit																		
IC110H1004	100-Pair Wiring Kit																		
Product #	Description																		
IC110TC350	3 Conductor, 110																		
IC110TC450	2-Pair, 110																		
IC110TC460	2-Pair, CAT 6																		
 <p>110 Cable Management Block</p> <table border="1"> <thead> <tr> <th>Product #</th> <th>Description</th> </tr> </thead> <tbody> <tr> <td>IC110CMBWF</td> <td>With Feet</td> </tr> </tbody> </table> <ul style="list-style-type: none"> Organizes cables 	Product #	Description	IC110CMBWF	With Feet	 <p>CAT5^e 110 Strain Relief</p> <table border="1"> <thead> <tr> <th>Product #</th> <th>Description</th> </tr> </thead> <tbody> <tr> <td>A. ICSRMP1104</td> <td>Strain Relief, 10 pcs</td> </tr> </tbody> </table> <ul style="list-style-type: none"> Applies to 110 patch cord ends 10 pcs/Pack <p>110 Patch Plugs</p> <table border="1"> <thead> <tr> <th>Product #</th> <th>Description</th> </tr> </thead> <tbody> <tr> <td>B. ICMP1101PR</td> <td>Terminates 1-Pair</td> </tr> <tr> <td>ICMP1102PR</td> <td>Terminates 2-Pairs</td> </tr> <tr> <td>ICMP1103PR</td> <td>Terminates 3-Pairs</td> </tr> <tr> <td>ICMP1104PR</td> <td>Terminates 4-Pairs (PICTURED)</td> </tr> </tbody> </table> <ul style="list-style-type: none"> Use with solid or stranded UTP cable 	Product #	Description	A. ICSRMP1104	Strain Relief, 10 pcs	Product #	Description	B. ICMP1101PR	Terminates 1-Pair	ICMP1102PR	Terminates 2-Pairs	ICMP1103PR	Terminates 3-Pairs	ICMP1104PR	Terminates 4-Pairs (PICTURED)
Product #	Description																		
IC110CMBWF	With Feet																		
Product #	Description																		
A. ICSRMP1104	Strain Relief, 10 pcs																		
Product #	Description																		
B. ICMP1101PR	Terminates 1-Pair																		
ICMP1102PR	Terminates 2-Pairs																		
ICMP1103PR	Terminates 3-Pairs																		
ICMP1104PR	Terminates 4-Pairs (PICTURED)																		
 <p>110 Cable Management Block</p> <table border="1"> <thead> <tr> <th>Product #</th> <th>Description</th> </tr> </thead> <tbody> <tr> <td>IC110CMBNF</td> <td>Without Feet</td> </tr> </tbody> </table> <ul style="list-style-type: none"> Organizes cables 	Product #	Description	IC110CMBNF	Without Feet	 <p>CAT5^e 110 Connecting Blocks</p> <table border="1"> <thead> <tr> <th>Product #</th> <th>Description</th> </tr> </thead> <tbody> <tr> <td>IC110CB3PR</td> <td>3-Pair, 10 pcs/Pk</td> </tr> <tr> <td>IC110CB4PR</td> <td>4-Pair, 10 pcs/Pk (PICTURED)</td> </tr> <tr> <td>IC110CB5PR</td> <td>5-Pair, 10 pcs/Pk</td> </tr> </tbody> </table> <ul style="list-style-type: none"> Supports Category 5e data Color coded for easy termination 	Product #	Description	IC110CB3PR	3-Pair, 10 pcs/Pk	IC110CB4PR	4-Pair, 10 pcs/Pk (PICTURED)	IC110CB5PR	5-Pair, 10 pcs/Pk						
Product #	Description																		
IC110CMBNF	Without Feet																		
Product #	Description																		
IC110CB3PR	3-Pair, 10 pcs/Pk																		
IC110CB4PR	4-Pair, 10 pcs/Pk (PICTURED)																		
IC110CB5PR	5-Pair, 10 pcs/Pk																		
 <p>110 Cable Management Block</p> <table border="1"> <thead> <tr> <th>Product #</th> <th>Description</th> </tr> </thead> <tbody> <tr> <td>IC110WHCMS</td> <td>Hinged</td> </tr> </tbody> </table> <ul style="list-style-type: none"> Hinged for rear access Organizes cables Includes mounting screws 	Product #	Description	IC110WHCMS	Hinged	 <p>Cable Management Spools</p> <table border="1"> <thead> <tr> <th>Product #</th> <th>Description</th> </tr> </thead> <tbody> <tr> <td>A. ICACSWDS10</td> <td>Spool Without Screw</td> </tr> <tr> <td>B. ICACSWDS20</td> <td>Spool With Screw</td> </tr> </tbody> </table> <ul style="list-style-type: none"> Retains and guides cables 10 pcs/Pack 	Product #	Description	A. ICACSWDS10	Spool Without Screw	B. ICACSWDS20	Spool With Screw								
Product #	Description																		
IC110WHCMS	Hinged																		
Product #	Description																		
A. ICACSWDS10	Spool Without Screw																		
B. ICACSWDS20	Spool With Screw																		
 <p>110 Cable Management Panel</p> <table border="1"> <thead> <tr> <th>Product #</th> <th>Description</th> </tr> </thead> <tbody> <tr> <td>IC110RMCMB</td> <td>110 Cable Panel</td> </tr> </tbody> </table> <ul style="list-style-type: none"> Organizes cables 19" EIA rack mount width <p>1 RMS (Rack Mount Space) = 1.75"</p>	Product #	Description	IC110RMCMB	110 Cable Panel	 <p>Label Sheet & Holder</p> <table border="1"> <thead> <tr> <th>Product #</th> <th>Description</th> </tr> </thead> <tbody> <tr> <td>A. IC110LBLxx¹</td> <td>Wiring Label Sheet</td> </tr> <tr> <td>B. IC110HLDR</td> <td>Label Holder, 6 pcs</td> </tr> </tbody> </table> <ul style="list-style-type: none"> Use with 110 wiring blocks Available in assortment of colors 10 label sheets/Box Holds and protects 110 wiring labels <p>¹xx denotes color = BK-Black, BR-Brown, GN-Green, BL-Blue, GY-Gray, IV-Ivory, OR-Orange, PR-Purple, RD-Red, WH-White, YL-Yellow</p>	Product #	Description	A. IC110LBLxx ¹	Wiring Label Sheet	B. IC110HLDR	Label Holder, 6 pcs								
Product #	Description																		
IC110RMCMB	110 Cable Panel																		
Product #	Description																		
A. IC110LBLxx ¹	Wiring Label Sheet																		
B. IC110HLDR	Label Holder, 6 pcs																		



Blank | 66 Wiring Block

Product # *Description*
IC066NB050 66 Wiring Block, Blank

25

- Designed for voice applications (50-Pair)
- Durable high impact flame retardant material
- Wall mountable with optional 89B bracket



Pre-Wired | 66 Wiring Blocks

Product # *Description*
IC06626P4C Pre-Wired 66 Block, (12) RJ-11 Ports (PICTURED)
IC06628P8C Pre-Wired 66 Block, (12) RJ-45 Ports
IC06686P6C Pre-Wired 66 Block, (8) RJ-11 Ports

25

- Pre-wired ports
- Integrated with 89D mounting bracket for wall mounting
- Includes removable hinged cover



With Telco | 66 Wiring Blocks

Product # *Description*
IC066SFT25 Pre-Terminated, Single Female Telco Connector
IC066DFT50 Pre-Terminated, Dual Female Telco Connectors (PICTURED)

25

- (1) or (2) pre-wired female Telco connectors (25/50-Pair)
- Velcro® security straps to maintain integrity of connections
- Integrated with 89D mounting bracket for wall mounting
- Includes removable hinged cover

See page 47 for 25-Pair Telco Cables (ICPCST)



66 Wiring Block Cover

Product # *Description*
IC066CV050 66 Block Cover

- Clear cover protects terminations
- Provides clean appearance
- Snaps on for convenience



66 Wiring Block Labeling Strips

Product # *Description*
IC066LS050 Labeling Strips, 10 pcs

- Slide-on strip secures terminated wires



89 Mounting Brackets

Product # *Description*
ICMB89B0WH 89B Bracket (PICTURED)
ICMB89D0WH 89D Bracket
ICMB89U0WH 89U Bracket

- For wall mounting
- Compatible with blank 66 wiring blocks



66 Wiring Block Bridging Clips

Product # *Description*
IC066BRCLP Clip, 100 pcs/Pack

- Electrically interconnect adjacent terminals
- Tin plated phosphor bronze