

9611G Deskphone

Provide everyday users with enriched communications capabilities

- Enables efficient, high-speed call management through support for up to three 12 or 24 Button Expansion Modules
- Supports reduced energy consumption and costs through Power-over-Ethernet Class 1 design with "sleep mode"
- Delivers high-definition audio that can increase productivity by reducing fatigue and provides easier-to understand multi-party calls using the wideband audio codec in the handset and headset
- Simplifies call control on the display using softkeys to transfer, conference and forward calls and to access everyday processes including third-party applications such as company-wide corporate directories
- Facilitates access to information through an easy-to-read, high resolution color display and a permanently labeled Navigation Cluster (Up/Down, Left/Right, OK)
- Delivers visual queues that can speed task management through 8 Red/Green LEDs
- Helps increase productivity through context-sensitive graphical interfaces
- Provides consistency through a common Avaya one-X® interface (including mobile endpoints)
- Offers flexibility through support of DECT Headsets and Bluetooth (with adapter)
- Provides choice through integrated Gigabit Ethernet and USB interface support
- Accommodates changing business needs with Session Initiated Protocol (SIP) based infrastructure

BADGER PART NUMBER:

700504845

*** MULTI-PACK PART NUMBER:**

700510904



700504845

Button Module

Button module with 12 paperless keys for 9508, 9608 and 9641G

- 9508 set will require 1151C (700356447) to power set
- 9608 & 9641G sets will require Single port POE Injector (700500725) to power set

BADGER PART NUMBER:

700480643



700480643

IP Phone Single Point PoE Injector

- New Power injector for 9608, 9621G and 9641G phone
- The current power supplies of the 1151-series cannot be used
- Power cord, which is not included, must be ordered separately or obtained elsewhere

BADGER PART NUMBER:

700500725

1600 SERIES IP TELEPHONES

1616 IP Telephone

Multi-line Value Edition IP telephone

- Backlit 4-Row x 24-Character Adj. Display • Module Interface - For 32-Button Expansion Module (700415573)
- Four-way Navigation Cluster Button with Three Contextual Soft-key Buttons • Fixed Drop Button • Color: Black
- 14 Fixed Feature Keys: Volume, Voice-mail, App. Button, Avaya Menu Button, Contacts, Call Log, Redial, Speaker, Mute, Headset, Hold, Conference, Transfer, Contacts
- PoE 802.3-af Class 3 device, also supports all local IPS • 16-Line Appearance/Feature Key Buttons - W/ Dual LEDs
- Ethernet (10/100) Line Interface w/ a secondary 10/100 port for Collocated Laptop or PC • 2-Way Speakerphone
- Optional Gigabit Adapter for Gigabit Connectivity to a PC • H.323 Protocol Support • Headset Interface

BADGER PART NUMBER:

700504843

*** MULTI-PACK PART NUMBER:**

700510908



700504843

1608 IP Telephone

Multi-line Value Edition IP Telephone

- Backlit, 3-Row x 24-Character LCD Adjustable Display • 2-Way Speakerphone • Headset Interface
- Four-way Navigation Cluster Button with Three Contextual Soft-key Buttons • Color: Black
- 14 Fixed Feature Keys: Volume, Voice-mail, App. Button, Avaya Menu Button, Contact, Call Log, Redial, Speaker, Mute, Headset, Hold, Conference, Transfer, Drop
- Ethernet (10/100) Line Interface with a secondary 10/100 port for Co-located Laptop or PC
- PoE 802.3af Class 2 Device, Also Supports a Local Power Supply • H.323 Protocol Support

BADGER PART NUMBER:

700508260

*** MULTI-PACK PART NUMBER:**

700510907



700508260

9601

Delivering efficient, productive communications for a wide range of users.

This deskphone delivers advanced, integrated connectivity in a cost-effective, simple SIP solution. The 9601 is a SIP-only device and is designed for the everyday user as well as for use in common office and building areas. The 9601 has a 2.7 inch monochrome display. The 9601 is Power over Ethernet Class 1 and supports wideband audio with the G.722 codec.

BADGER PART NUMBER:

700506783



700506783

9608G IP Phone

New 8/24 -button LCD-paperless IP-phone

- Display/Housing: 9608: Monochrome display – 3.2 inches x 2.2 inches (8.2 cm x 5.5 cm);
- Fixed feature buttons: 10 on 9608 plus four-way navigation cluster button;
 - Volume up/down (separate volume levels for the handset, speaker, and ringer), mute button (LED), speaker button(LED), headset button (LED)
 - Avaya Menu button (browser, options and settings access), Telephony application button – to return to main telephone screen
 - Contacts button, Call log button (LED), quick-access voicemail Message button with LED and corner message indicator
- Features Menu: Mobile-phone style menu with access to most often used features like call forwarding, park, settings etc. on-screen status indication for activated features like call forwarding
- Speakerphone: Full duplex speakerphone • Order Ethernet cable separately

BADGER PART NUMBER:

700505424

*** MULTI-PACK PART NUMBER:**

700510905



700505424

9621G IP Phone

New touch-screen Gigabit IP phone

- Order Ethernet cable separately • Speakerphone: Full duplex speakerphone
- Display/Housing: 9621: Color touch-screen display – 3.7 inches x 2.1 inches (9.5 cm x 5.4 cm); Flip stand/dual position
- Fixed Feature Buttons: 11 on 9621/41 No Four-way button
 - Volume up/down (separate volume levels for the handset, speaker, and ringer), Mute button (LED), Speaker button(LED), Headset button(LED)
 - Avaya Menu button (browser, options and settings access), Telephony application button – to return to main telephone screen
 - Contacts button, Call log button (LED), quick-access voicemail Message button with LED and corner message indicator

BADGER PART NUMBER:

700480601



700480601

9641G IP Phone

New touch-screen Gigabit IP Telephone with Bluetooth for future use

- 11 Fixed Feature Buttons:
 - Volume up/down (separate volume levels for the handset, speaker, and ringer), Mute button (LED), Speaker button (LED), Headset button (LED).
 - Avaya Menu button (browser, options and settings access), Telephony application button – to return to main telephone screen.
 - Contacts button, Call log button (LED), quick-access voicemail Message button with LED and corner message indicator.
- Speakerphone: Full duplex speakerphone • Order Ethernet cable separately

BADGER PART NUMBER:

700506517



700506517

1400 SERIES DIGITAL TELEPHONES

AVAYA

1408

- Display/Housing: Backlit display – 3.5" diagonal, 3 rows by 24 characters white 1408. Dual position flip stand
- Fixed Feature Buttons: 15 plus Four-way navigation cluster button
 - Volume up/down (separate volume levels for the handset, speaker, and ringer), Mute button, Speaker button, Headset button
 - Avaya Menu button (options and settings access), Telephony application button – to return to main telephone screen
 - Hold button, Conference button, Transfer button, Drop button
 - Contacts button, Call log button, Redial button, Quick-access voicemail Message button
- Programmable/Contextual buttons: 11
 - 8 line appearance/feature key buttons – with dual LEDs (red, green) and paper labels (Printing tool available)
 - Three contextual softkey buttons
- Key Labels: Icons used on fixed feature keys. None on programmable feature keys
- Features Menu: Mobile-Phone style menu with access to most often used features like call forwarding, Park, Settings etc., on-screen status indication for activated features like call forwarding
- Speakerphone: High quality two-way hands-free speaker and microphone

BADGER PART NUMBER:

700469851

*** MULTI-PACK PART NUMBER:**

700510909



700469851

1416

- Display/Housing: Backlit display – 4 rows by 24 characters with adjustable display angle, white backlight display, dual position flip stand
- Fixed Feature Buttons: 15 plus Four-way navigation cluster button
 - Volume up/down (separate volume levels for the handset, speaker, and ringer), Mute button, Speaker button, Headset button
 - Avaya Menu button (options and settings access), Telephony application button – to return to main telephone screen
 - Hold button, Conference button, Transfer button, Drop button.
 - Contacts button, Call log button, Redial button, Quick-access voicemail Message button
- Programmable/Contextual buttons: 19
 - 16 line appearance/feature key buttons with dual LEDs (red, green) and paper labels (Printing tool available)
- Key Labels: Icons used on fixed feature keys. None on programmable feature keys
- Features Menu: Mobile-Phone style menu with access to most often used features like call forwarding, Park, Settings etc. On screen status indication for activated features like call forwarding
- Speakerphone: High quality two-way hands-free speaker and microphone

BADGER PART NUMBER:

700469869

*** MULTI-PACK PART NUMBER:**

700510910



700469869

EXPANSION MODULE FOR 1416/1616

DBM32

- Programmable/Contextual buttons: It provides 32 additional buttons all with dual LEDs (red, green) for easy visibility
- Connect to: Expansion port on 1416/1616. Up to 3 DBM32/BM32 button modules can be connected to a 1416/1616 phone. Up to a maximum of 32 BM32 units are supported on the whole IP Office system. Note: A maximum of 2 DBM32 per 1416 on the IPO R6 Essential Edition PARTNER® Version and up to 32 DBM32s per system are supported.

BADGER PART NUMBER:

700469968

9500 SERIES DIGITAL TELEPHONES

9504 Digital Phone

- Monochrome Backlit display – 4 rows by 24 characters • Fixed Feature Buttons: 10 plus Four-way navigation cluster button • Volume up/down (separate volume levels for the handset, speaker, and ringer), Mute button (LED), Speaker button(LED), Headset button(LED) • Avaya Menu button (browser, options and settings access), telephony application button – to return to main telephone screen • Contacts button, history (Call log) button (LED), quick-access voicemail message button with LED and corner message indicator
- Programmable /Contextual buttons • 12 - in 3 switchable display pages of 4 matching the 4 physical display buttons, all 4 buttons with Dual LED indicator • 4 contextual softkey buttons, context sensitive allocation of e.g. hold, transfer, conference and more • Icons and text used on fixed feature keys • Two-way speakerphone

BADGER PART NUMBER:

700508197

*** MULTI-PACK PART NUMBER:**

700510914



700508197

1603/1603SW IP Telephone

Multi-line Value Edition IP telephone (1603 Compatible with IP Office R4.2 and above; 1603SW Compatible with IP Office R5)

- 3-Line Appearance/Feature Key Buttons with Dual LEDs • Optional 5 Volt Wall-plug Power supply
- Standards based codec support: G 711, G 726, G 729 A/B • Backlit, 2-Row x 16-Character Display
- 9 Fixed Feature Keys: Menu, Volume, Redial, Speaker, Mute, Hold Conference, Transfer and Drop
- Ethernet (10/100) Line Interface with a secondary 10/100 port for Co-located Laptop or PC (Available only on 1603SW model)
- Single Ethernet 10/100 Line Interface (Available only on 1603 model) • 2-Way Speakerphone
- H.323 protocol support • Optional IEEE PoE 802.3af Adapter Registers as Class 1 Device • Color: Black

BADGER PART NUMBER:

700508259 1603
700508258 1603SW



1603 - 700508259
1603SW - 700508258

1600 Series 32-Button Module (BM32)

32 Button Expansion Module for 1616 IP Telephone

- Provides Access to a total of 112 Feature Keys or Speed Dial Buttons • Color: Black
- Each of the Buttons Features a Dual LED Providing Explicit User Status
- Buttons can be Administered as Line Appearances, Bridged Appearances, Feature Keys or Speed Dials
- Up to 3 modules supported per 1616 telephone • Up to 16 BM32 modules supported per IP Office system

BADGER PART NUMBER:

700415573



700415573

1600 SERIES IP TELEPHONE ACCESSORIES

Accessories

BADGER PART NUMBER:

700383326	CAT5 Ethernet Cord (14 ft)	700415722	1616 Flip Stand - Replacement
700436710	CAT5 Ethernet Cord (1ft)	700432800	1600 Series BM32 Flip Stand - Replacement
700415623	1608 Wall-Mount Kit	700427495	1600 Series Handset - Replacement
700415631	1616 Wall-Mount Kit	700429707	1600 Series 9' Handset Cord - Replacement (Black)
700415581	1600 Series BM32 Cable - Replacement	700383821	9600/1600 Series 25' Handset Cord (Grey)
700415599	1600 Series BM32 Bond Bridge - Replacement		
700419831	1603 Plastic Label Covers (10) - Replacement		
700415664	1608 Plastic Label Covers (10) - Replacement		
700415672	1616/BM32 Plastic Label Covers (20) - Replacement		
700415714	1608 Flip Stand - Replacement		

Power

BADGER PART NUMBER:

700415607 1603 PoE Adapter

1400 SERIES DIGITAL TELEPHONES

1403

- Display: 2 rows by 16 characters. white backlight for 1403
- Fixed Feature Buttons: 10 - Volume up/down (separate volume levels for the handset, speaker, and ringer), Mute button, Speaker button. Avaya Menu button (options and settings access). Hold button, Conference button, Transfer button, Drop button, Redial button
- Programmable/Contextual buttons: 3 line appearance key buttons – with dual LEDs (red, green) and paper labels (Printing tool available)
- Key Labels: Icons used on fixed feature keys. None on programmable feature keys.
- Speakerphone: Two-way hands-free speaker and microphone.

BADGER PART NUMBER:

700508193



700508193

B100 SERIES ACCESSORIES



Expansion Microphones

BADGER PART NUMBER:

700501539 AVAYA B100 SER EXP MIC 1PR

Mobile Cable iPhone

BADGER PART NUMBER:

700501553 AVAYA B100 MOBILE CBL IPHONE

Wall Mounting Bracket

BADGER PART NUMBER:

700501536 AVAYA B100 SER WALL MNTG BRKT

Security Cable

BADGER PART NUMBER:

700501540 AVAYA B100 SER SECURITY LOCK/CBL

PA Interface Box

BADGER PART NUMBER:

700501537 AVAYA B100 SER PA SYS INTF BOX

AC Adapter 14V DC

BADGER PART NUMBER:

700501534 AVAYA B100 SER PWR ADPTR

SD Memory Card 2GB

BADGER PART NUMBER:

700501538 AVAYA B100 SER MEMORY CARD 2GB

D100 SIP DECT SYSTEM

The Avaya D100 SIP DECT system is a wireless solution that makes it simple to respond to customer needs whenever and wherever required. The Avaya D100 SIP DECT wireless telephone system integrates fully with IP Office to provide full access to system features. Utilizing next-generation digital wireless technology (DECT 6.0), the Avaya D100 SIP DECT wireless telephone system offers crystal-clear, high quality voice communication.

D160 Handset

The D160 Handset allows easy access to IP Office features with 2 x 24 display, 4 soft keys and 8 function keys. The battery capacity allows for 16 hours of talk time and 7 days of standby time.

The following telephony features are supported on the D160 Handset:

- Make and drop call • Conference (3 party via IP Office)
- Music-on-hold (via IP Office) • Redial • Button programming
- Mute • Voicemail access • Call forwarding (via IP Office)
- Transfer • Emergency call • Hot desking



700503100

D100 Base Station

The D100 Base Station is connected to the IP network and powered by Power-over-Ethernet (PoE). Customers without PoE switch can purchase PoE injectors, such as Avaya's SPPOE-1A, to power the D100 base station.

The radio coverage for the D100 base station is 100-350 ft indoor and 700 ft in open field. Up to 8 D160 handsets can register to each base station.



700504737

D100 Repeater

The D100 Repeater has a cell radio coverage of 100-350 ft indoor and 700 ft in open field. Up to 5 repeaters can be used with each base station. The D100 SIP DECT Wireless telephone system is approved in the following regions: US, Canada, European Union, Switzerland, South Africa, Turkey and Norway.

BADGER PART NUMBER:

700503098 D100 IP DECT Kit with Base Station and Handset North America

700503100 D160 IP DECT Handset with Charger North America

700503102 D100 IP DECT Range Kit North America

700503104 D100 IP DECT Repeater North America

700504737 D100 IP DECT Base Station North America



700503104

IP DECT SOLUTIONS

3720

A cost effective handset for office environments

Its features are:

- Black and white display • Half duplex speaker phone • Graphical user interface
- Four way navigation key • 2.5 mm standard headset connector
- 5 built-in UI languages (German, English, French, Spanish Russian), other UI languages can be downloaded on demand
- Talk time 16 hours under optimal conditions • Standby time 180 hours under optimal conditions
- Charge time below 4 hours

BADGER PART NUMBER:

700466105



700466105

9508 Digital Phone

- Monochrome Backlit display – 3.2 inches x 2.2 inches (8.2 cm x 5.5 cm); Fixed Feature Buttons: 10 plus Four-way navigation cluster button • Volume up/down (separate volume levels for the handset, speaker, and ringer), mute button (LED), Speaker button(LED), Headset button(LED) • Avaya Menu button (browser, options and settings access), telephony application button – to return to main telephone screen.
- Contacts button, history (Call log) button (LED), quick-access voicemail message button with LED and corner message indicator • Programmable /Contextual buttons: 24 - in 3 switchable display pages of 8 matching the 8 physical display buttons, all 8 buttons with Dual LED indicator • 4 contextual softkey buttons, context sensitive allocation of e.g. hold, transfer, conference and more • Key Labels: Icons and text used on fixed feature keys

BADGER PART NUMBER:

700504842

*** MULTI-PACK PART NUMBER:**

700510913



700504842

* Save the environment and money with new deskphone multipacks

Avaya's new deskphone multipacks provide customers with an opportunity to help the environment and save money!

Multipacks of four deskphones will be available for:

- 9608G and 9611G IP Deskphones
- 1608 and 1616 IP Deskphones
- 1408 and 1416 Digital Deskphones
- 9504 and 9508 Digital Deskphones

Multi-pack benefits include:

- Lower per-unit List Price than individual packaged sets
- Increased shipping efficiency
- Reduction in packaging materials
- Conserves natural resources and reduces environmental impacts

Below are the new part codes that will be available via the normal ordering processes and tools.

MULTI-PACK PART NUMBER:	DESCRIPTION:
700510909	1408 TELSET CM/IPO/IE UpN ICON 4 PK
700510910	1416 TELSET CM/IPO/IE UpN ICON 4 PK
700510913	9508 TELSET FOR IPO ICON 4 PK
700510914	9504 TELSET FOR IPO ICON 4 PK
700510907	1608-I IP DESKPHONE ICON 4 PK
700510908	1616-I IP DESKPHONE ICON 4 PK
700510904	9611G IP PHONE GLOBAL 4 PK
700510905	9608G IP PHONE GRY GLOBAL 4 PK

B100 SERIES CONFERENCE TELEPHONES

B149

Analog Conference Phone

BADGER PART NUMBER:

700501533



700501533

B159

Analog Conference Phone

BADGER PART NUMBER:

700501530



700501530

B179

SIP Conference Phone

BADGER PART NUMBER:

700501532



700501532

B189

IP Conference Phone

BADGER PART NUMBER:

700503700



700503700

Overview

Avaya Vantage is the all-new dedicated desktop device that provides simple, instant, seamless & natural engagement. Users can fire up voice, chat, collaboration instantly through one touch connections with no unnatural breaks or pauses – eliminating the need to manage multiple devices in order to engage. Put your applications on this eye-catching, friendly device. It is perfect for use on desktops, in hotel rooms, healthcare facilities, kiosks – wherever users need to run their applications. Open integration and extensibility with the Avaya Breeze™ Client SDK means it's easy to personalize Vantage for your industry, business, and users. Enable unique custom experiences that mesh into your workflows and business processes using this powerful, customizable device – and enjoy the advantages of a deskphone and flexibility of an application platform.

BENEFITS:

Improved and Customized User Experience

Customers are looking for fast & unique customization to business-enable their applications – achieved through the use of Avaya Breeze™ Client SDK.

Provides natural engagement

In sync with the present day multi-channel communication needs, eliminating the need to own multiple devices that give rise to communications silos.

Ease of use

Provides simplified user interface on large touch screen displays and eliminates unnatural workflows or pauses during communications.

BADGER PART NUMBER:

700512709	Vantage Device w/ camera
700512710	Vantage Device w/o camera



700512709

MEDIA STATIONS

E159/E169 Media Stations

Using personal smartphones and tablets for business (known as “Bring Your Own Device”) is practiced almost everywhere today. From small businesses to the largest global enterprises, many employees rely on their own mobile devices to stay connected, productive, and efficient while working. Now, when on-the-go employees are in the office, the Avaya E159 and E169 Media Stations enable them to continue to use their mobile device. Use an Avaya E159 or E169 Media Station as a standard SIP desk phone on its own. Or, dock your Apple iOS or Android smartphone or tablet, log in via the Media Station app, and turn your mobile device into an enterprise-grade communications tool. They feature superb audio quality, a secure connection to your network, and the calling features you need most – all via an easy-to-use interface on your smart device.

BENEFITS:

Enhanced productivity

Mobile workers continue to use the device they're most comfortable with to stay connected and responsive.

High quality audio experience

Voice and video calls are enhanced with superior quality sound built into the E159 and E169 Media Stations.

Secure, integrated communications

Standards-based SIP support delivers basic call handling features and acts like a SIP endpoint on the network so it's easy to manage and administer securely.

BADGER PART NUMBER:

700508084	E159 Media Station
700508096	E169 Media Station



700508084



700508096

3725

A high end phone for office environments and light industrial environments like healthcare and retail

Its features are:

- Color display • Half duplex speaker phone • Graphical user interface
- Five way navigation key • Bluetooth headset interface (Bluetooth 2.0, handsfree profile)
- Liquid and dust protected (IP 44) • Easy exchange of battery pack
- Multi-functional button (alarm call, answer call, etc.)
- Text message support (requires AIWS server, 30 messages sent/received storable, message length 160 characters)
- 2.5 mm standard headset connector
- 19 built-in UI languages (Czech, Danish, Dutch, English, Finnish, French, German, Italian, Norwegian, Portuguese, Spanish, Swedish, Polish, Greek, Hungarian, Brazilian Portuguese, Slovakian, Turkish, Russian)
- Talk time under optimal conditions
 - 13 hours with Bluetooth headset in use
 - 20 hours without Bluetooth headset in use
- Standby time 120 hours under optimal conditions

BADGER PART NUMBER:

700466139



700466139

3749

Industrial Handset

- Same feature set as 3740 • Color display with backlight and icons
- Bluetooth support for headsets
- Intrinsically safe: ATEX and IECEx for
 - Gas: II 2G Eex ib IIC T4
 - Dust: II 3D Ex ibD 22

BADGER PART NUMBERS:

700479462

Multiple Battery Charger

- Charger to charge up to six 3725 battery packs in parallel
- Battery pack must be taken out of the 3725 handset before charging

BADGER PART NUMBERS:

700466329

372X Accessories

BADGER PART NUMBER:

- 700466683** Additional battery pack for 3720 handset
- 700466691** Additional battery pack for 3725 handset
- 700466568** Spare basic belt clip for 3720 and 3725 handset
- 700466337** Swivel belt clip for 3720 and 3725 handset

374X Accessories

BADGER PART NUMBER:

- 700500871** DECT 374x HANDSET BASIC CHARGER KIT UK/NAR/AUSTRALIA - Basic Charger (374x handsets) North America
- 700500875** DECT 374x HANDSET ADVANCED CHARGER KIT NORTH AMERICA REGION - Advanced Charger (374x handsets) North America
- 700479496** DECT 374x HANDSET RACKMOUNT CHARGER KIT - 374x rack-mount charger
- 700479504** DECT 374x MULTIPLE BATTERY CHARGER KIT -374x multi-battery charger
- 700500841** DECT 3740 HANDSET BATTERY PACK - Spare Battery Pack for 3740 handsets
- 700500842** DECT 3749 HANDSET BATTERY PACK - Spare Battery Pack for 3740 handsets
- 700500843** DECT 3749 BATTERY PACK OPENER - Battery pack opener for 3749 handset (special tool required due to intrinsically safe design)
- 700479546** DECT HANDSET LEATHER CASE 374x - Leather Case for 374x handsets
- 700479553** DECT 374x HANDSET BASIC BELT CLIP - Basic Belt-Clip for 374x Handsets
- 700479561** DECT 374x HANDSET SWIVEL BELT CLIP - Swivel Belt-Clip for 374x Handsets

Rackmount Charger

- Same function as advanced chargers, up to six 3720 or 3725 handsets

BADGER PART NUMBERS:

700466311

Advanced Charger

Charger to charge one 3720 or 3725 phone

- Comes w/USB and Ethernet connectors
- Also use for "Easy Replacement" (copying the settings from old, damaged, working phone to a new phone for non-administrators)

BADGER PART NUMBER:

700466295

Basic Charger for one 3720 or 3725 Phone

BADGER PART NUMBER:

700500011



ONLINE STORE we've got you covered

www.badgercommunications.com

FREE STANDARD SHIPPING

*for all orders that qualify for standard ground shipping. some exclusions apply.

QUOTES

Easily view, create and modify quotes inside our online store. When you're ready you can convert to an order with the click of a button.

WHAT'S IN STOCK?

Our stock quantities are clearly displayed in real-time.

ORDER HISTORY

View the order history for your entire company from the ORDER HISTORY tab on our Online Store.

715-672-4200

The Badger Communications team is available Monday-Friday 8am-4:30pm.

Technical and Design Support

The Badger Support Team will help you understand which hardware and software your Avaya systems need to ensure your customer has the features they need.

Save time and headache on your next install by having the Badger team pre-program your next Avaya system.



TRAINING

Choose our introductory classes to refresh or take your first steps into the world of Avaya and IP Office.

You can even sell an IP Office and program it during training at Badger.



6863



6865



6867



6869



6873

Telephony Hardware Features

Ethernet ports	Dual 10/100 Mbps	Dual 10/100/1000 Mbps	Dual 10/100/1000 Mbps	Dual 10/100/1000 Mbps	Dual 10/100/1000 Mbps
Programmable Soft keys with LEDs (# of function)	0	0	6 (20)	12 (44)	0
Programmable soft keys	0	0	0	0	48
Programmable context-sensitive system keys (# of functions)	0	0	4 (18)	5 (24)	0 (30 soft keys)
Programmable keys (paper labels)	3	8	0	0	0
Re-programmable hard function keys (keycaps)			•	•	•
Magnetic keyboard interface			•	•	
USB & Bluetooth headset support			• (by download)	• (by download)	• (native support)
DHSG/EHS headset ports		•	•	•	
Modular 4 PIN headset port		•	•	•	
Expansion module support		Up to 3	Up to 3	Up to 3	Up to 3
USB 2.0 port			•	•	•
Display screen size	2.75"	3.4"	3.5"	4.3"	7"
Display screen resolution	128 x 48 pixels	128 x 48 pixels	320 x 420 pixels	480 x 272 pixels	800 x 640 pixels
Display screen type	Monochrome	Monochrome	Color	Color	Color (touchscreen)
Backlit display		•	•	•	•

Telephony Features

Number of lines	2	24 (with expansion)	24 (with expansion)	24	24
Directory Name/Number Capacity	200	200	200	200	200
Callers log Name/Number capacity	200	200	200	200	200
Last Number Redial capacity	100	100	100	100	100

Power Options

Power over Ethernet	Class 1	Class 2	Class 2	Class 3	Class 3
Dynamic PoE Class Switching	N/A	Class 2 to Class 3 with M685	Class 2 to Class 3 with M685	N/A	Class 3 to Class 4 with M685
AC adaptor (optional)	Level V efficiency	Level V efficiency	Level V efficiency	Level V efficiency	Level VI efficiency

Part Numbers

Part Number	80C00005AAA-A	80C00001AAA-A	80C00002AAA-A	80C00003AAA-A	50006790
-------------	---------------	---------------	---------------	---------------	----------

Mitel 6873 SIP Phone

The Mitel 6873 SIP Phone is designed for power users who demand a lot from their phone. The 6873 offers executives a large 7" touchscreen display, crystal clear HD audio and 48 programmable soft keys. Dual Gigabit Ethernet ports, embedded Bluetooth, powered USB port, touchscreen keyboard and choice of expansion modules ensure the 6873 delivers a robust, productivity-enhancing executive desktop communication tool.

- Large color 7" 800x640 pixel LCD Touch Display • Up to 24 lines with 2 dedicated line keys with LED
- Dual GigE Ethernet Ports • 48 Programmable soft keys that can be customized over 4 pages
- 30 Context-sensitive system soft keys that can be customized over 4 pages
- Embedded Bluetooth 4.0 • Powered USB port

BADGER PART NUMBER:

50006819 Aastra Branded 6873i w/o AC Adapter

50006790 Mitel Branded 6873i w/o AC Adapter



50006790

Mitel 6869 SIP Phone

The Mitel 6869 SIP phone commands the desktop with its large 4.3" color display, powerful crystal clear HD audio and 12 programmable soft keys. Dual Gigabit Ethernet ports, magnetic keyboard interface, native DHSG/EHS headset support, and choice of expansion modules make the 6869 a powerful and expandable desktop communication device.

- Large color 4.3" 480x272 pixel LCD display • Up to 24 lines with 2 dedicated line keys
- Magnetic Keyboard Interface • Dual GigE Ethernet Ports
- DHSG/EHS headset support-Expansion module support.
- 12 programmable soft keys with LEDs that can be customized to access up to a total of 44 functions
- 5 context-sensitive system keys that can be customized to access up to a total of 24 functions

BADGER PART NUMBER:

50006818 Aastra Branded 6869i w/o AC Adapter

80C00003AAA-A Mitel Branded 6869i w/o AC Adapter



80C00003AAA-A

Mitel 6867 SIP Phone

The Mitel 6867 SIP provides remarkable HD wideband audio and an enhanced speakerphone that utilizes advanced audio processing to achieve richer and clearer conversations. The 6867 offers a large color LCD display, dual port GigE, six programmable soft keys, four context-sensitive system keys, native DHSG/EHS headset and Expansion Module support.

- Color 3.5" QVGA 320x240 pixel LCD display • Up to 24 lines when connected to an expansion module
- 2 dedicated line keys with LEDs • Magnetic Keyboard Interface • Dual GigE Ethernet Ports
- DHSG/EHS headset and Expansion Module support
- 6 programmable soft keys with LEDs that can be customized to access up to a total of 20 functions
- 4 context-sensitive system keys that can be customized to access up to a total of 18 functions

BADGER PART NUMBER:

50006817 Aastra Branded 6867i w/o AC Adapter

80C00002AAA-A Mitel Branded 6867i w/o AC Adapter



80C00002AAA-A

Mitel 6865 SIP Phone

The Mitel 6865 SIP Phone offers exceptional value in a fully featured, expandable IP phone. With its eight programmable keys, XML capabilities, Expansion Module and native DHSG/EHS support, the Mitel 6865 SIP phone is ideally suited for the small to large business market that needs Gigabit throughput for PC connectivity.

- 3.4" 128x48 pixel graphical backlit display • Up to 24 lines when connected to an expansion module
- 2 dedicated line keys with LEDs • Wideband handset and speakerphone • Dual GigE Ethernet Ports
- DHSG/EHS headset and Expansion Module support • 8 programmable keys with LEDs

BADGER PART NUMBER:

50006816 Aastra Branded 6865i w/o AC Adapter

80C00001AAA-A Mitel Branded 6865i w/o AC Adapter



80C00001AAA-A

Mitel 6863 SIP Phone

This 2-Line SIP phone with 2.75" graphical monochrome LCD display, programmable hard keys, and smaller desktop footprint is an ideal option for professional workers in business environments that have light telephone use requirements.

- 2.75" 128x48 pixel graphical display • Up to 2 lines with dedicated line keys
- Wideband handset and speakerphone • Dual 10/100 BaseT Ethernet ports with hardware based switch
- 3 programmable keys pre-programmed and labelled with Callers List, Redial and Transfer

BADGER PART NUMBER:

50006815 Aastra Branded 6863i w/o AC Adapter

80C00005AAA-A Mitel Branded 6863i w/o AC Adapter



80C00005AAA-A

Mitel 6739 SIP Phone

- Integrated Gigabit Ethernet • Up to 9 lines with call appearances
- Shared Call and Bridged Lines Appearances • Multi-proxy support • Distinctive ringing, priority alerting
- 144x128 pixels graphical LCD display • LED for call and message waiting indicator • Personal directory
- Call forward/call transfer/call waiting • Caller and Calling Line Information • Callers log
- Support for Extra Directory Number • Intercom with auto-answer • Do Not Disturb
- 4 call appearance lines with LEDs • 4 navigational keys • HD Audio
- 12 customizable softkeys with LEDs; programmable up to 30 functions • 8 pre-defined hard keys
- Supports up to 3 M670 or M675 modules • Support for Power over Ethernet with power class 2

BADGER PART NUMBER:

A6739-0131-1001

6739i CHAR SIP NA



A6739-0131-1001

Mitel 6737 SIP Phone

- Integrated Gigabit Ethernet • Up to 9 lines with call appearances
- Shared Call and Bridged Lines Appearances • Multi-proxy support • Distinctive ringing, priority alerting
- 144x128 pixels graphical LCD display • LED for call and message waiting indicator • Personal directory
- Call forward/call transfer/call waiting • Caller and Calling Line Information • Callers log
- Support for Extra Directory Number • Intercom with auto-answer • Do Not Disturb
- 4 call appearance lines with LEDs • 4 navigational keys
- 12 customizable softkeys with LEDs; programmable up to 30 functions
- 8 pre-defined hard keys • Supports up to 3 M670 or M675 modules
- Support for Power over Ethernet with power class 2 • HD Audio

BADGER PART NUMBER:

A6737-0131-1001

6737i Eng Keypad - No Power Supply



A6737-0131-1001

Mitel 6735 SIP Phone

- Integrated Gigabit Ethernet • Up to 9 lines with call appearances
- Shared Call and Bridged Lines Appearances • Multi-proxy support • Distinctive ringing, priority alerting
- 144x75 pixels graphical LCD display • LED for call and message waiting indicator • Personal directory
- Call forward/call transfer/call waiting • Caller and Calling Line Information • Callers log
- Support for Extra Directory Number • Intercom with auto-answer • Do Not Disturb
- 4 call appearance lines with LEDs • 4 navigational keys
- 6 customizable softkeys with LEDs; programmable up to 26 functions
- 6 programmable keys with LEDs • 8 pre-defined hard keys • Supports up to 3 M670 or M675 modules
- Support for Power over Ethernet with power class 2 • HD Audio

BADGER PART NUMBER:

A6735-0131-10-01

6735i Eng Keypad - No Power Supply



A6735-0131-10-01

Mitel 6731 SIP Phone

- Slimmer design • Up to 6 call appearance lines with LEDs (2 dedicated keys)
- Shared Call and Bridged Lines Appearances • Multi-proxy support • Distinctive ringing, priority alerting
- 3 line LCD display • LED for call and message waiting indicator • Personal directory
- Call forward/call transfer/call waiting • Caller and Calling Line Information • Caller log
- Support for Extra Directory Number • Intercom with auto-answer • Do Not Disturb • 4 navigational keys
- 8 programmable keys with LEDs • 10 pre-defined hard keys • Mitel Hi-Q Audio Technology
- Power over Ethernet • 2-port soft Ethernet switch

BADGER PART NUMBER:

A6731-0131-10-01

6731i CHAR SIP NA



A6731-0131-10-01

Mitel 6730 SIP Phone

- Slimmer design • Up to 6 call appearance lines with LEDs (2 dedicated keys)
- Shared Call and Bridged Lines Appearances • Multi-proxy support • Distinctive ringing, priority alerting
- 3 line LCD display • LED for call and message waiting indicator • Personal directory
- Call forward/call transfer/call waiting • Caller and Calling Line Information • Caller log
- Support for Extra Directory Number • Intercom with auto-answer • Do Not Disturb • 4 navigational keys
- 8 programmable keys with LEDs • 10 pre-defined hard keys • Mitel Hi-Q Audio Technology

BADGER PART NUMBER:

A6730-0131-10-01

6730i CHAR SIP NA



A6730-0131-10-01

MITEL 6800 SIP PHONE SERIES EXPANSION MODULES



M685 EXPANSION MODULE

The M685 features a color LCD screen and 28 programmable keys, with the ability to scroll through three pages of programmed entries.

- Supported on the 6865, 6867 and 6869
- 28 programmable softkeys with LEDs
- 4.3" 480x272 pixel color backlit LCD display
- Can be daisy chained with the M680 for a combined total of up to 3 modules
- Powered by the phone—no separate power adapter required

BADGER PART NUMBER:

50006820 Aastra Branded M685i expansion module

80C00007AAA-A Mitel Branded M685i expansion module



80C00007AAA-A

M680 EXPANSION MODULE

The M680 is compact, cost-efficient, and provides 16 additional programmable keys with built-in LEDs.

- Supported on the 6865, 6867 and 6869
- 16 programmable keys with LEDs
- Paper insert labeling
- Can be daisy chained with the M685 for a combined total of up to 3 modules
- Powered by the phone—no separate power adapter required

BADGER PART NUMBER:

80C00010AAA-A M680i expansion module



80C00010AAA-A

MITEL 6800 SIP PHONE SERIES ACCESSORIES

K680 DETACHABLE MAGNETIC KEYBOARD

The K680 Detachable Magnetic Keyboard magnetically attaches to the 6867 and 6869 models to allow easy and quick navigation through features and directories.

- Magnetically connects to phone
- QWERTY, QWERTZ, AZERTY versions
- Powered by the phone—no cables or batteries required

BADGER PART NUMBER:

80C00008AAA-A K680 detachable magnetic keyboard



80C00008AAA-A

WALL-MOUNT KIT

All Mitel 6800 Series SIP phones can be wall-mounted safely and securely. The wall-mount kit has a two piece slide-and-lock design and includes a short Ethernet cable, making installation simple and efficient.

- 2 fixed angles to choose from: 10° and 20° (6869 offers 20° angle only)

BADGER PART NUMBER:

80C00011AAA-A 6800i Wall Mount Kit



80C00011AAA-A

AC ADAPTER

Mitel (48v) AC Adapters are energy efficient Level V compliant with a choice of regional interfaces – support for 100-240VAC and 47-63Hz inputs.

BADGER PART NUMBER:

50006822 AC Power Supply - L5 48V NA (67XX,68XX)



The Mitel 6725 Lync Phone is optimized to work with Lync™, Microsoft's Voice IP PBX solution. The Mitel 6725 Lync Phone features the embedded phone addition, offering access and interoperability with Microsoft's Lync Server R 14 software. The Mitel 6725 Lync Phone supports dual Gigabit Ethernet interfaces, PoE, a rich color display and support high definition audio. Additionally, the Mitel 6725 Lync Phone has an optional USB cable which, when connected to the users PC, provides a further level of integration including click to dial off any phone number displayed on the PC.

Mitel 6725 Lync Phone

The Mitel 6725 Lync Phone is a user-friendly IP phone that can operate as a stand-alone Microsoft Communications Server 14 endpoint. When connected to a Microsoft Communicator 14 equipped desktop, it provides a tight integration with the desktop client.

- Embedded Microsoft Communicator Phone Edition Software
- Color screen • Direct desktop integration
- Personal presence indicator • USB interfaces • Speakerphone
- Standalone operation • Dual gigabit Ethernet ports
- Support for Microsoft's "Better Together" desktop link
- PC Desktop control of phones calling features such as transfer, hold, call park conferencing and click-to-dial

BADGER PART NUMBER:

A6725-0131-20-55	Charcoal, Mitel 6725 (No A/C Adapter)
D0023-1051-02-75	Optional A/C Adapter
D0067-0002-00-00	Wall Mount kit for the Lync phone (6721 and 6725)



A6725-0131-20-55

Mitel Extended Warranty Program for IP Phones

Mitel offers 1, 3 and 5 year Enhanced Warranties for the Mitel 67xx series, M670i, M675i of IP Telephones.

These Enhanced warranties provide you a key benefit to offer to your customers.

Warranty MUST be purchased at the same time the Mitel IP Telephones are purchased/invoiced.

Please ask your 4SVYV Sales Representative for details on these warranties.

IP TELEPHONES - ENHANCED WARRANTIES

Extended and Advanced Replacement Warranties

Note: Warranty MUST be purchased at the same time the IP Phone is purchased.

A6730-0131-10-01-W1	1 Year Enhanced Warranty for Mitel 6730	A1735-0131-10-05-W3	3 Year Enhanced Warranty for Mitel 9480
A6731-0131-10-01-W1	1 Year Enhanced Warranty for Mitel 6731 no AC adapter	A1736-0000-10-55-W3	3 Year Enhanced Warranty for Mitel M670 Module
A6731-0131-10-02-W1	1 Year Enhanced Warranty for Mitel 6731 with AC adapter	A1760-0000-10-55-W3	3 Year Enhanced Warranty for Mitel M675 Module
A6725-0131-20-55-W1	1 year Enhanced Warranty for Mitel 6725	A6739-0131-10-01-W3	3 Year Enhanced Warranty for Mitel 6739 English Keypad
A1736-0000-10-55-W1	1 Year Enhanced Warranty for Mitel M670 Module	A6730-0131-10-01-W5	5 Year Enhanced Warranty for Mitel 6730
A1760-0000-10-55-W1	1 Year Enhanced Warranty for Mitel M675 Module	A6731-0131-10-01-W5	5 Year Enhanced Warranty for Mitel 6731 no AC adapter
A1735-0131-10-05-W1	1 Year Enhanced Warranty for Mitel 9480	A6731-0131-10-02-W5	5 Year Enhanced Warranty for Mitel 6731 with AC adapter
A6739-0131-10-01-W1	1 Year Enhanced Warranty for Mitel 6739 English Keypad	A6721-0131-20-55-W5	5 year Enhanced Warranty for Mitel 6721
A6730-0131-10-01-W3	3 Year Enhanced Warranty for Mitel 6730	A6725-0131-20-55-W5	5 year Enhanced Warranty for Mitel 6725
A6731-0131-10-01-W3	3 Year Enhanced Warranty for Mitel 6731 no AC adapter	A1736-0000-10-55-W5	5 Year Enhanced Warranty for Mitel M670i Module
A6731-0131-10-02-W3	3 Year Enhanced Warranty for Mitel 6731 with AC adapter	A1760-0000-10-55-W5	5 Year Enhanced Warranty for Mitel M675 Module
A6721-0131-20-55-W3	3 year Enhanced Warranty for Mitel 6721	A6739-0131-10-01-W5	5 Year Enhanced Warranty for Mitel 6739 English Keypad
A6725-0131-20-55-W3	3 year Enhanced Warranty for Mitel 6725		
A6721-0131-20-55-W1	1 Year Enhanced Warranty for Mitel 6721		

Mitel M670 and Mitel M675 Expansion Modules

Both modules are directly powered from the phone and can be used with selected 6700 series models. Up to 3 modules can be joined together with a single telephone. Additional keys support programmable features such as: Line, Speed Dial, Busy Lamp Field (maximum of 50 BLF per phone), Bridged Line Appearance, Shared Call Appearance and Do not Disturb.

MITEL M670

- LED for status indication
- 36 programmable keys for programmable features
- Compatible with MiVoice 6737 and 6739 models

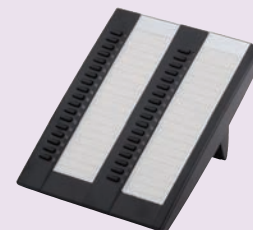
MITEL M675

- LED for status indication
- 20 softkeys available on 3 screens (60 keys)
- 144x128 pixels graphical LCD display
 - Soft white backlight for user comfort in any lighting environment
 - Configurable for Always On, Always Off, or Auto (power saving)
- Compatible with Mitel 6737 and 6739 models

BADGER PART NUMBER:

A1736-0000-10-55 M670i Expansion Module

A1760-0000-10-55 M675i Expansion module



A1736-0000-10-55



A1760-0000-10-55

Mitel 6700 SIP Phone Series Accessories

Mitel High-Angle Stand Accessory

The Mitel High Angle stand is an optional accessory for the 6700 Series of SIP phones that increases the viewing angle of the phone up to a maximum of 60 degrees. This stand has been designed to address the needs of those users who prefer to have the phone at a higher incline as a way to enhance the position of the display for an optimal viewing experience, and to optimize the position of phone's handset and keys.

- 4 different viewing angles are supported: approximately 30, 40, 50 and 60 degrees
- Easy snap-on installation with wobble reduction mechanism
- Slip-resistant rubber feet, which provide a secure grip on most desktop surfaces
- Provides quick and easy access to phone's back panel connectors
- Compatible with Mitel 6735, Mitel 6737, Mitel 6739, Mitel 6725 Lync Phone

BADGER PART NUMBER:

D0080-1659-00-75 Charcoal, High-Angle Stand



D0080-1659-00-75

Wall Mount Kit for Mitel 6700 SIP Phones

The optional wall mount kit for the Mitel 6700 SIP phones enables easy installation for the following models - Mitel 6735, Mitel 6737, Mitel 6739. Provides solid and secure connection to most wall mounting plates and positions phone at a 20 degrees incline enabling easy reading of the LCD display. Supplied with wall mounting screws and anchors, 8 inch Ethernet cable and installation instructions.

Included With Each Wall Mount:

- Template for screw location • Mounting screws and anchors to connect to wall
- Handset clips to secure phone on hook • Simple installation guide • 8.7 inch Ethernet cable

43697D PART NUMBER:

87-00072AA-A Wall Mount Kit



87-00072AA-A

UNIVERSAL AC ADAPTER

- Mitel - Power adapter - for 6730, 6731, 6735, 6737, and 6739

BADGER PART NUMBER:

D0023-1051-0075 Aastra 675xi Univers AC Adapt



D0023-1051-0075

	6737	6739
TELEPHONE FEATURES		
Number of lines	9	9
Multi-line, multi-proxy registration support	*	*
Programmable functions (hard keys/softkeys)***	30 (0/12)	55 (0/55)
Pre-programmed feature keys	8	14
Compatible with M670 expansion module	*	*
Compatible with M675 expansion module	*	*
Full-duplex speakerphone	*	*
Dedicated headset jack	Modular connector	Modular connector
Display screen size	144 x 75 pixels	640 x 480 Color touch screen
Backlit display	*	*
Adjustable display contrast	*	*
Visual Message Waiting Indication	*	*
Busy Lamp Field (BLF)	*	*
Call park/pickup	*	*
Do Not Disturb (DND)	*	*
Call waiting display	*	*
Call forward	*	*
Missed call indicator	*	*
Intercom/auto answer capability	*	*
Directory name/number capacity	200	200
Callers log name/number capacity	200	200
Last number redial name/number capacity	100	100
Priority alert/distinctive ringing	*	*
Multilingual support	*	*
POWER OPTIONS		
Power over Ethernet	*	*
AC wall adapter (included)	Optional	Optional
CONFIGURATION & ADMINISTRATION		
Telephone user interface	*	*
Web user interface	*	*
Encryption of configuration file	*	*
Software & config. download - TFTP, FTP, HTTP	*	*
Automatic software update	*	*
NETWORK SUPPORT AND INTERFACES		
Ethernet ports	Two 10/100/1000 Mbps	Two 10/100/1000 Mbps
802.1p/q VLAN tagging & QoS	*	*
802.1X support	*	*
NAT support phone side	*	*
STUN, TURN	*	*
Outbound proxy support	*	*
IETF DHCP	*	*
IETF SNTP	*	*
SRTP and TLS security	*	*
LLDP-MED	*	*
USB interface		*
PROTOCOL SUPPORT		
Encrypted recording, Active/On demand	*/*	*/*
XML support	*	*
AUDIO AND CODEC		
Mitel Hi-Q Audio Technology		
Mitel HD Audio Technology	*	*
G.711µ-law/A-law, G.729, G.722	*	*
Voice quality metrics, including MOS	*	*
EHS support for wireless headsets	*	*
Built-in Bluetooth interface		*
* Latest builds ** Software switched		

	6730	6731	6735
TELEPHONE FEATURES			
Number of lines	6	6	9
Multi-line, multi-proxy registration support	*	*	*
Programmable functions (hard keys/softkeys)***	8 (8/0)	8 (8/0)	26 (6/6)
Pre-programmed feature keys	10	10	8
Compatible with M670 expansion module			*
Compatible with M675 expansion module			*
Full-duplex speakerphone	*	*	*
Dedicated headset jack			Modular connector
Display screen size	3 lines x 16 characters	3 lines x 16 characters	144 x 75 pixels
Backlit display			*
Adjustable display contrast	*	*	*
Visual Message Waiting Indication	*	*	*
Busy Lamp Field (BLF)	*	*	*
Call park/pickup	*	*	*
Do Not Disturb (DND)	*	*	*
Call waiting display	*	*	*
Call forward	*	*	*
Missed call indicator	*	*	*
Intercom/auto answer capability	*	*	*
Directory name/number capacity	200	200	200
Callers log name/number capacity	200	200	200
Last number redial name/number capacity	100	100	100
Priority alert/distinctive ringing	*	*	*
Multilingual support	*	*	*
POWER OPTIONS			
Power over Ethernet		*	*
AC wall adapter (included)	*	*	Optional
CONFIGURATION & ADMINISTRATION			
Telephone user interface	*	*	*
Web user interface	*	*	*
Encryption of configuration file	*	*	*
Software & config. download - TFTP, FTP, HTTP	*	*	*
Automatic software update	*	*	*
NETWORK SUPPORT AND INTERFACES			
Ethernet ports	One 10/100 Mbps	Two 10/100 Mbps**	Two 10/100/1000 Mbps
802.1p/q VLAN tagging & QoS	*	*	*
802.1X support	*	*	*
NAT support phone side	*	*	*
STUN, TURN	*	*	*
Outbound proxy support	*	*	*
IETF DHCP	*	*	*
IETF SNTP	*	*	*
SRTP and TLS security	*	*	*
LLDP-MED	*	*	*
USB interface			
PROTOCOL SUPPORT			
Encrypted recording, Active/On demand	*/-	*/-	*/*
XML support	*	*	*
AUDIO AND CODEC			
Mitel Hi-Q Audio Technology	*	*	
Mitel HD Audio Technology			*
G.711µ-law/A-law, G.729, G.722	*	*	*
Voice quality metrics, including MOS	*	*	*
EHS support for wireless headsets			*
Built-in Bluetooth interface			
* Latest builds ** Software switched			

System Software - Open Mobility Manager (OMM)

BADGER PART NUMBER:	Name	Description
89-00004AAA-A	OMM System CD 4.0	Necessary for the PARK and TAD codes required for system activation written on the CD label. Minimum 1 OMM required per installation (Multi-site capable).

SIP-DECT Enterprise Plus - For Up to 2048 RFP Access Points (UNLICENSED) (Requires System License Purchase)

BADGER PART NUMBER:	Name	Description
T0000-68637016	RFP 35 IP Indoor AP	IP-DECT base station; indoor; integrated antenna; connection to a Gigabit LAN (Ethernet access) for SIP-DECT, use with AC adapter or PoE. Need system license to operate.
68635010	RFP 36 IP Outdoor AP	IP-DECT base station; outdoor; connection to a Gigabit LAN (Ethernet access) for SIP-DECT, use with Power over Ethernet (PoE), with internal antennas. Need system license to operate.

OMM Software Maintenance (Highly Recommended)

BADGER PART NUMBER:	Name	Description
68632017	OMM Upgrade License	SIP-DECT License for software upgrades for 12 months. Required to entitle software upgrades for a 12 month period from system activation. If renewed within active 12 month period of coverage, will include an additional 3 months coverage.

SIP-DECT - ENTERPRISE PLUS - LICENSES

System Licenses (For SIP-DECT - Enterprise Plus) (Required License)

BADGER PART NUMBER:	Name	Description
68667013	OM System License 10	SIP-DECT License for up to 10 RFPs
68666015	OM System License 20	SIP-DECT License for up to 20 RFPs
68665017	OM System License 50	SIP-DECT License for up to 50 RFPs
68664010	OM System License 100	SIP-DECT License for up to 100 RFPs
68663012	OM System License 250	SIP-DECT License for up to 250 RFPs
68662014	OM System License 500	SIP-DECT License for up to 500 RFPs
68661016	OM System License 1000	SIP-DECT License for up to 1000 RFPs

Licenses for Messaging & Alerting (For SIP-DECT - Enterprise Plus) (Optional Advanced Feature License - Messaging Sending Enablement Feature)

BADGER PART NUMBER:	Name	Description
68659010	OM Messaging License 10 - for sending messages	SIP-DECT Messaging License for up to 10 handsets (sending messages)
68658012	OM Messaging License 20 - for sending messages	SIP-DECT Messaging License for up to 20 handsets (sending messages)
68657014	OM Messaging License 50 - for sending messages	SIP-DECT Messaging License for up to 50 handsets (sending messages)
68656016	OM Messaging License 100 - for sending messages	SIP-DECT Messaging License for up to 100 handsets (sending messages)
68655018	OM Messaging License 250 - for sending messages	SIP-DECT Messaging License for up to 250 handsets (sending messages)
68660018	OM Messaging & Alerting System License - alerting & receiving messages	SIP-DECT Messaging and Alerting System License (for alarm handling and alarm confirmation; receiving messages)

Powerful Features And Performance In A SIP Based DECT Enterprise Mobility Solution

Employing the latest DECT technology, Mitel SIP-DECT offers superior levels of performance, security and reliability in a cordless SIP telephone system. This scalable, Enterprise-grade, mobility solution allows users to take the features and voice quality of their desk telephones with them throughout their office environment or related branch offices serviced by the same corporate network. DECT technology virtually eliminates issues of dropped calls, interference, security and range by employing RFP base stations that seamlessly "handoff" calls and enable roaming. This system is ideal for any single or multi-location business, retail or institutional setting that requires mobile employees to be available to take or receive calls at any time.

Key Solution Highlights Include:

- Seamless Mobility – handsets act as normal company extensions, allowing staff to be reached in both headquarters and branch office locations.
- Feature Rich Handsets – provide most desk phone features and more.
- Scalability – by simply adding additional handsets and access points, Mitel SIP-DECT can easily expand to meet changing business requirements.
- Simplified Deployment – can be easily deployed in most open-standard IP environments including; Hosted or Premised-based using a SIP-based IP-PBX, Hybrid PBX or Open Source PBX.
- Authorization/Certification and demo kit purchase required. (Demo Kit purchased directly from Mitel with 2 handsets, (2) RFP L35's, (1) OMM 4.0).

SIP-DECT HANDSETS

Mitel 612 DECT Handset

- High-quality entry-level SIP-DECT wireless handset
- Redial list for quick access to the last 201 numbers dialed
- Optimum overview and user-friendly menus
- Large LCD display (2", 220 pixels, monochrome) with backlight
- Up to 200 contacts in the local phone book with 8 inputs each*
- SOS key for emergency speed dial number
- Phone directory for 200 contacts
- Universal AC adapter • Charcoal and Silver
- 44 polyphonic ring tones
- Ambient noise filter for loud environments

BADGER PART NUMBER:

80E00011AAA-A

*Depending on the system.



80E00011AAA-A

Mitel 622 DECT Handset

- High-quality business-level SIP-DECT wireless handset
- Many freely programmable keys for easy navigation
- Up to 200 hours operating time in standby mode*
- Large color LCD display (2", 176 x 220 pixels; 65,536 colors) with backlight
- Built-in Bluetooth® interface for advanced connectivity with cordless headsets
- Universal AC adapter • Charcoal and Silver
- TFT color display • USB interface

BADGER PART NUMBER:

80E00012AAA-A

*Depending on the system.



80E00012-AAA-A

SIP-DECT - ENTERPRISE - MOBILITY SOLUTION

System Software - Open Mobility Manager (OMM)

BADGER PART NUMBER:	Name	Description
89-00004AAA-A	OMM System CD 4.0 (Drop-Ship Only)	Necessary for the PARK and TAD codes required for system activation written on the CD label. Minimum 1 OMM required per installation (Multi-site capable).

SIP-DECT Enterprise - For Up to 20 RFP Access Points (PRE-LICENSED)

BADGER PART NUMBER:	Name	Description
T0000-68622018	RFP L35 IP	IP-DECT base station; indoor; integrated antenna; connection to a Gigabit LAN (Ethernet access) for SIP-DECT, use with AC adapter or PoE. Deployments with 3 or more RFP's require a free system Activation Key to be installed to operate.
68621010	RFP L36 IP	IP-DECT base station; outdoor; connection to a Gigabit LAN (Ethernet access) for SIP-DECT, use with Power over Ethernet (PoE) ONLY. Deployments with 3 or more RFP's require a free system Activation Key to be installed to operate.



OMM Software Maintenance (Highly Recommended)

BADGER PART NUMBER:	Name	Description
68632017	OMM Upgrade License	SIP-DECT License for software upgrades for 12 months. Required to entitle software upgrades for a 12 month period from system activation. If renewed within active 12 month period of coverage, will include an additional 3 months coverage.



ONLINE STORE we've got you covered

www.badgercommunications.com

FREE STANDARD SHIPPING

*for all orders that qualify for standard ground shipping. some exclusions apply.

QUOTES

Easily view, create and modify quotes inside our online store. When you're ready you can convert to an order with the click of a button.

WHAT'S IN STOCK?

Our stock quantities are clearly displayed in real-time.

ORDER HISTORY

View the order history for your entire company from the ORDER HISTORY tab on our Online Store.

715-672-4200

The Badger Communications team is available Monday-Friday 8am-4:30pm.

Technical and Design Support

The Badger Support Team will help you understand which hardware and software your Avaya systems need to ensure your customer has the features they need.

Save time and headache on your next install by having the Badger team pre-program your next Avaya system.



TRAINING

Choose our introductory classes to refresh or take your first steps into the world of Avaya and IP Office.

You can even sell an IP Office and program it during training at Badger.

Licenses for Locating (For SIP-DECT - Enterprise Plus) (Optional Advanced Feature License - Handset Location Feature)

BADGER PART NUMBER:	Name	Description
68654011	OM Locating License 10	SIP-DECT License for up to 10 handsets
68653013	OM Locating License 20	SIP-DECT License for up to 20 handsets
68652015	OM Locating License 50	SIP-DECT License for up to 50 handsets
68651017	OM Locating License 100	SIP-DECT License for up to 100 handsets
68650019	OM Locating License 250	SIP-DECT License for up to 250 handsets
68649011	OM Locating Server License	SIP-DECT Locating application, convenient for up to 10 administration clients

Licenses for G.729 Codec (For SIP-DECT - Enterprise Plus) (Optional Advanced Feature License - Voice Quality Enhancement Feature)

BADGER PART NUMBER:	Name	Description
86-00012AAA-A	OM G.729 License 5	SIP-DECT G.729 License for 5 concurrent calls
86-00013AAA-A	OM G.729 License 10	SIP-DECT G.729 License for 10 concurrent calls
86-00014AAA-A	OM G.729 License 20	SIP-DECT G.729 License for 20 concurrent calls
86-00015AAA-A	OM G.729 License 50	SIP-DECT G.729 License for 50 concurrent calls
86-00016AAA-A	OM G.729 License Mini	SIP-DECT License for systems with 1-2 standard (non-L) standard

SIP-DECT - ACCESSORIES

Accessories for RFP Base Stations

Power Supply for RFP (L)35 IP & RFP 35 IP

Power supply for the base station RFP (L)35 IP and RFP 35 IP, with plugs for EU, UK, US, AUS, South America.

BADGER PART NUMBER:
87-00002AAA-A



Wall Mounting Set

For outdoor RFP with mount set for Outdoor RFP (L)36 IP and RFP 36.

BADGER PART NUMBER:
D4602-286D-00-00



Accessories for SIP-DECT Handset Family

Mitel 612 and 622 - Charger with Intl. AC-Adapter

With plugs for EU, UK, US, AUS, South America

BADGER PART NUMBER:
68980010



Mitel 622 - High Density Battery Pack

High density battery - Normal battery stand by 95 hours, extends to 190 hours talk time normal 15 hours extends to 30 hours.

BADGER PART NUMBER:
68773027



Mitel 622 - Cover for High Density Battery

Compartment to accommodate high density battery.

BADGER PART NUMBER:
68772029



Mitel 612, 622, Standard Battery Pack

Standard Battery Pack, 300 charging cycle.

BADGER PART NUMBER:
68768027



Mitel 612, 622 - Rotary Belt Clip

BADGER PART NUMBER:
68770015



Mitel 622 - Mini USB Service Cable

Used to link phone with PC and back up data of the handset.

BADGER PART NUMBER:
68759018



Mitel 612, 622 - Leather Pouch with Belt Clip

BADGER PART NUMBER:
68762012



Mitel 612, 622 - Standard Belt Clip

BADGER PART NUMBER:
68765015



Teledex E Series

Originally styled to meet the limited space and energy requirements aboard cruise ship cabins, E Series hotel phones are amazingly big on features, yet surprisingly small in size. Interior designers appreciate the sophisticated extra thin, ultra-stylish body while guests enjoy the familiar, comfortable feel of a sleek, modern handset. Available in single and two-line, analog, VoIP, corded, and cordless configurations with or without built-in USB charging ports. Available in Black.

Teledex E Series USB



Badger Part Number:	Name	Description
E Series USB — VoIP Cordless		
EV11319S4DU	E103IP - 4GSK	1L, Spkr, 4GSK, 1 USB
EV11319S7DU	E103IP - 7GSK	1L, Spkr, 7GSK, 1 USB
EV11319S0HKU	E103IP - HDKIT	1L, Handset, 0GSK, 2USB
EV12319S4DU	E203IP - 4GSK	2L, Spkr, 4GSK, 1 USB
EV12319S7DU	E203IP - 7GSK	2L, Spkr, 7GSK, 1 USB
EV12319S0HKU	E203IP - HDKIT	2L, Handset, 0GSK, 2USB
E Series USB — VoIP Corded		
EV110S4DU	E100IP - 4GSK	1L, Spkr, 4GSK, LCD, 1 USB
EV110S7DU	E100IP - 7GSK	1L, Spkr, 7GSK, LCD, 1 USB
EV120S4DU	E200IP - 4GSK	2L, Spkr, 4GSK, LCD, 1 USB
EV120S7DU	E200IP - 7GSK	2L, Spkr, 7GSK, LCD, 1 USB
E Series Trimline — VoIP Corded		
EV011000S00T	E100IP - ETrim	1L, 0GSK, 0 USB
EV012000S00T	E200IP - ETrim	2L, 0GSK, 0 USB

Badger Part Number:	Name	Description
E Series USB — Analog Cordless		
EA11319S4DU	E103 - 4GSK	1L, Spkr, 4GSK, 2 USB
EA11319S8DU	E103 - 8GSK	1L, Spkr, 8GSK, 2 USB
EA11319S0HKU	E103 - HDKIT	1L, Handset, 0GSK, 2 USB
EA12319S4DU	E203 - 4GSK	2L, Spkr, 4GSK, 2 USB
EA12319S8DU	E203 - 8GSK	2L, Spkr, 8GSK, 2 USB
EA12319S0HKU	E203 - HDKIT	2L, Handset, 0GSK, 2 USB
E Series USB — Analog Corded		
EA110S4DU	E100 - 4GSK	1L, Spkr, 4GSK, 2 USB
EA110S8DU	E100 - 8GSK	1L, Spkr, 8GSK, 2 USB
EA120S4DU	E200 - 4GSK	2L, Spkr, 4GSK, 2 USB
EA120S8DU	E100 - 8GSK	2L, Spkr, 8GSK, 2 USB
E Series Trimline — Analog Corded		
EA011000S00T	E100 - ETrim	1L, 0GSK, 0 USB
EA012000S00T	E200 - ETrim	2L, 0GSK, 0 USB

Badger Part Number:	Name	Description
E Series — VoIP Cordless		
EV011319S04D	E103IP - 4GSK	1L, Spkr, 4GSK
EV011319S07D	E103IP - 7GSK	1L, Spkr, 7GSK
EV011319S00H	E103IP - HDKIT	1L, Handset, 0GSK
EV012319S04D	E203IP - 4GSK	2L, Spkr, 4GSK
EV012319S07D	E203IP - 7GSK	2L, Spkr, 7GSK
EV012319S00H	E203IP - HDKIT	2L, Handset, 0GSK
E Series — VoIP Corded		
EV011000S04D	E100IP - 4GSK	1L, Spkr, 4GSK, LCD
EV011000S07D	E100IP - 7GSK	1L, Spkr, 7GSK, LCD
EV011000N00L	E100IP - Lobby	1L, 0GSK, LCD
EV012000S04D	E200IP - 4GSK	2L, Spkr, 4GSK, LCD
EV012000S07D	E200IP - 7GSK	2L, Spkr, 7GSK, LCD
E Series Trimline — VoIP Corded		
EV011000S00T	E100IP - ETrim	1L, 0GSK
EV012000S00T	E200IP - ETrim	2L, 0GSK

Badger Part Number:	Name	Description
E Series — Analog Cordless		
EA011319S04D	E103 - 4GSK	1L, Spkr, 4GSK
EA011319S08D	E103 - 8GSK	1L, Spkr, 8GSK
EA011319S00H	E103 - HDKIT	1L, Handset, 0GSK
EA012319S04D	E203 - 4GSK	2L, Spkr, 4GSK
EA012319S08D	E203 - 8GSK	2L, Spkr, 8GSK
EA012319S00H	E203 - HDKIT	2L, Handset, 0GSK
E Series — Analog Corded		
EA011000S04D	E100 - 4GSK	1L, Spkr, 4GSK
EA011000S08D	E100 - 8GSK	1L, Spkr, 8GSK
EA011000N00L	E100 - Lobby	1L, 0GSK
EA012000S04D	E200 - 4GSK	2L, Spkr, 4GSK
EA012000S08D	E100 - 8GSK	2L, Spkr, 8GSK
E Series Trimline — Analog Corded		
EA011000S00T	E100 - ETrim	1L, 0GSK
EA012000S00T	E200 - ETrim	2L, 0GSK

Teledex M Series

More than just a telephone, M Series establishes a new definition for hotel guest room telephony.

Bluetooth Coded Analog

M Series Bluetooth telephones are available as analog corded phones, in both single and two-line configurations. Features include speakerphone, Bluetooth pairing, stereo-quality speakers, USB charging ports, high-speed RJ45 access port, patented OneTouch message retrieval, and full-length customizable faceplates.



Cordless and Cordless, Analog and VoIP

Teledex M Series hotel phones are also available in analog, VoIP, corded and cordless configurations with USB charging ports on both the phone and RediDock remote handset kit that support guest smart device charging. Choose 0, 5 or 10 configurable guest service keys, and 0, 3, or 6 guest service keys on the remote handset kits. Available in Black.

Badger Part Number: Name	Description	Badger Part Number: Name	Description
Bluetooth — Analog Corded		Analog Cordless	
MA10S5DB	M100B5 1L, 5GSK, 2 USB, BT	MA1319S5D	M1035 1L, 5GSK/0GSK, 2 USB
MA10S10DB	M100B10 1L, 10GSK, 2 USB, BT	MA1319S53D	M10353 1L, 5GSK/3GSK, 2 USB
MA20S5DB	M200B5 2L, 5GSK, 2 USB, BT	MA1319S56D	M10356 1L, 5GSK/6GSK, 2 USB
MA20S10DB	M200B10 2L, 10GSK, 2 USB, BT	MA1319S10D	M10310 1L, 10GSK/0GSK, 2 USB
VoIP Cordless		MA1319S103D	M103103 1L, 10GSK/3GSK, 2 USB
MV1319S5D	M103IP5 1L, 5GSK/0GSK, 1 USB	MA1319S106D	M103106 1L, 10GSK/6GSK, 2 USB
MV1319S53D	M103IP53 1L, 5GSK/3GSK, 1 USB	MA1319SHK	M103HDKT 1L, Handset, 0GSK, 2USB
MV1319S56D	M103IP56 1L, 5GSK/6GSK, 1 USB	MA1319S3HK	M1033HDKT 1L, Handset, 3GSK, 2USB
MV1319S10D	M103IP10 1L, 10GSK/0GSK, 1 USB	MA1319S6HK	M1036HDKT 1L, Handset, 6GSK, 2USB
MV1319S103D	M103IP103 1L, 10GSK/3GSK, 1 USB	MA2319S5D	M2035 2L, 5GSK/0GSK, 2 USB
MV1319S106D	M103IP106 1L, 10GSK/6GSK, 1 USB	MA2319S53D	M20353 2L, 5GSK/3GSK, 2 USB
MV1319SHK	M103IPHDKT 1L, Handset, 0GSK, 2USB	MA2319S56D	M20356 2L, 5GSK/6GSK, 2 USB
MV1319S3HK	M103IP3HDKT 1L, Handset, 3GSK, 2USB	MA2319S10D	M20310 2L, 10GSK/0GSK, 2 USB
MV1319S6HK	M103IP6HDKT 1L, Handset, 6GSK, 2USB	MA2319S103D	M203103 2L, 10GSK/3GSK, 2 USB
MV2319S5D	M203IP5 2L, 5GSK/0GSK, 1 USB	MA2319S106D	M203106 2L, 10GSK/6GSK, 2 USB
MV2319S53D	M203IP53 2L, 5GSK/3GSK, 1 USB	MA2319SHK	M203HDKT 2L, Handset, 0GSK, 2USB
MV2319S56D	M203IP56 2L, 5GSK/6GSK, 1 USB	MA2319S3HK	M2033HDKT 2L, Handset, 3GSK, 2USB
MV2319S10D	M203IP10 2L, 10GSK/0GSK, 1 USB	MA2319S6HK	M2036HDKT 2L, Handset, 6GSK, 2USB
MV2319S103D	M203IP103 2L, 10GSK/3GSK, 1 USB	Analog Corded	
MV2319S106D	M203IP106 2L, 10GSK/6GSK, 1 USB	MA10S5D	M1005 1L, 5GSK, 2 USB
MV2319SHK	M203IPHDKT 2L, Handset, 0GSK, 2USB	MA10S10D	M10010 1L, 10GSK, 2 USB
MV2319S3HK	M203IP3HDKT 2L, Handset, 3GSK, 2USB	MA20S5D	M2005 2L, 5GSK, 2 USB
MV2319S6HK	M203IP6HDKT 2L, Handset, 6GSK, 2USB	MA20S10D	M20010 2L, 10GSK, 2 USB
VoIP Corded		Trimline	
MV10S5D	M100IP5 1L, 5GSK, 1 USB	MA10NT	M100TRM 1L, 0GSK, 0 USB
MV10S10D	M100IP10 1L, 5GSK, 1 USB	MA20NT	M200TRM 2L, 0GSK, 0 USB
MV20S5D	M200IP5 2L, 5GSK, 1 USB		
MV20S10D	M200IP10 2L, 5GSK, 1 USB		

Teledex Opal Series

Opal Series offers a recognizable international design that compliments modern guest room décor. Available in single and two-line, analog, corded and cordless configurations, with optional speakerphone, and 0, 3, 5, or 10 programmable guest service keys. Opal DCT Series cordless sets support up to 3 additional AC-powered RediDock handset charging stations giving your guests the ability to charge their handset from multiple places within the room. Choose Black or Ash.



Badger Part Number:	Name	Description
Opal Series — Analog Cordless		
OPL95149	Opal DCT1905	1L, Spkr, 5GSK, Ash
OPL951491	Opal DCT1905	1L, Spkr, 5GSK, Black
OPL95339	Opal DCT1910	1L, Spkr, 10GSK, Ash
OPL953391	Opal DCT1910	1L, Spkr, 10GSK, Black
OPL95339HDKIT	Opal RD1910	1L, Handset, Ash
OPL953391HDKIT	Opal RD1910	1L, Handset, Black
OPL97149	Opal DCT2905	2L, Spkr, 5GSK, Ash
OPL971491	Opal DCT2905	2L, Spkr, 5GSK, Black
OPL97359	Opal DCT2910	2L, Spkr, 10GSK, Ash
OPL973591	Opal DCT2910	2L, Spkr, 10GSK, Black
OPL97359HDKIT	Opal RD2910	2L, Handset, Ash
OPL973591HDKIT	Opal RD2910	2L, Handset, Black
Opal Series Trimline — Analog Corded		
OPL69019	Opal Trimline 1	1L, no MW, 0GSK, Ash
OPL690191	Opal Trimline 1	1L, no MW, 0GSK, Black
OPL69119	Opal Trimline 1 MWL	1L, MW, 0GSK, Ash
OPL691191	Opal Trimline 1 MWL	1L, no MW, 0GSK, Black
OPL69059	Opal Trimline 2	2L, no MW, 0GSK, Ash
OPL690591	Opal Trimline 2	2L, no MW, 0GSK, Black
OPL69159	Opal Trimline 2 MWL	2L, MW, 0GSK, Ash
OPL691591	Opal Trimline 2 MWL	2L, MW, 0GSK, Black
Wall Mount Kit — Must Be Ordered Separately		
P-WALLOPL-TG	Opal WMK	Wall bracket, Ash
P-WALLOPL-TG1	Opal WMK	Wall bracket, Black

Badger Part Number:	Name	Description
Opal Series — Analog Corded		
OPL76009	Opal 1001	1L, Lobby, 0GSK, Ash
OPL760091	Opal 1001	1L, Lobby, 0GSK, Black
OPL76309	Opal 1000	1L, Basic, 0GSK, Ash
OPL763091	Opal 1000	1L, Basic, 0GSK, Black
OPL76039	Opal 1002	1L, 0GSK, Ash
OPL760391	Opal 1002	1L, 0GSK, Black
OPL76739	Opal 1003	1L, 3GSK, Ash
OPL767391	Opal 1003	1L, 3GSK, Black
OPL76749	Opal 1003S	1L, Spkr, 3GSK, Ash
OPL767491	Opal 1003S	1L, Spkr, 3GSK, Black
OPL76139	Opal 1005	1L, 5GSK, Ash
OPL761391	Opal 1005	1L, 5GSK, Black
OPL76149	Opal 1005S	1L, Spkr, 5GSK, Ash
OPL761491	Opal 1005S	1L, Spkr, 5GSK, Black
OPL76239	Opal 1010	1L, 10GSK, Ash
OPL762391	Opal 1010	1L, 10GSK, Black
OPL76339	Opal 1010S	1L, Spkr, 10GSK, Ash
OPL763391	Opal 1010S	1L, Spkr, 10GSK, Black
OPL78039	Opal 2006	2L, 6GSK, Ash
OPL780391	Opal 2006	2L, 6GSK, Black
OPL78149	Opal 2006S	2L, Spkr, 6GSK, Ash
OPL781491	Opal 2006S	2L, Spkr, 6GSK, Black
OPL78259	Opal 2011	2L, 11GSK, Ash
OPL782591	Opal 2011	2L, 11GSK, Black
OPL78359	Opal 2011S	2L, Spkr, 11GSK, Ash
OPL783591	Opal 2011S	2L, Spkr, 11GSK, Black

Teledex I Series

This is the original small footprint telephone built specifically for the hospitality guest room. Designed to embrace the sleek style of the modern hotel guest room, I Series hotel phones provides a familiar ergonomic user interface for your guests in your choice of single and two-line, analog and VoIP, corded and cordless configurations with 0, 3, 5, or 10 programmable guest service keys. Available in Black or Ash.



Badger Part Number:	Name	Description
I Series — VoIP Cordless		
IPN96459IP-N	NDC2105S	1L, Spkr, 5GSK, Ash
IPN964591IP-N	NDC2105S	1L, Spkr, 5GSK, Black
IPN965591IP-N	NDC2110S	1L, Spkr, 10GSK, Ash
IPN965591IP-N	NDC2110S	1L, Spkr, 10GSK, Black
IPN965591PHKT-N	IRD9110	1L, Handset, Ash
IPN965591IPHK-N	IRD9110	1L, Handset, Black
IPN98459IP-N	NDC2205S	2L, Spkr, 5GSK, Ash
IPN985591IP-N	NDC2205S	2L, Spkr, 5GSK, Black
IPN985591IP-N	NDC2210S	2L, Spkr, 10GSK, Ash
IPN985591IP-N	NDC2210S	2L, Spkr, 10GSK, Black
IPN985591PHKT-N	IRD9210	2L, Handset, Ash
IPN985591IPHK-N	IRD9210	2L, Handset, Black
I Series — VoIP Corded		
IPN331491IP-N	ND2105S	1L, Spkr, 5GSK, Ash
IPN331491IP-N	ND2105S	1L, Spkr, 5GSK, Black
IPN333391IP-N	ND2110S	1L, Spkr, 10GSK, Ash
IPN333391IP-N	ND2110S	1L, Spkr, 10GSK, Black
IPN341491IP-N	ND2205S	2L, Spkr, 5GSK, Ash
IPN341491IP-N	ND2205S	2L, Spkr, 5GSK, Black
IPN343591IP-N	ND2210S	2L, Spkr, 10GSK, Ash
IPN343591IP-N	ND2210S	2L, Spkr, 10GSK, Black
I Series Trimline — Analog Corded		
IPN33019	AT1101	1L, no MW, 0GSK, Ash
IPN330191	AT1101	1L, no MW, 0GSK, Black
IPN33119	AT1102	1L, MW, 0GSK, Ash
IPN331191	AT1102	1L, MW, 0GSK, Black
IPN34059	AT1201	2L, no MW, 0GSK, Ash
IPN340591	AT1201	2L, no MW, 0GSK, Black
IPN34159	AT1202	2L, MW, 0GSK, Ash
IPN341591	AT1202	2L, MW, 0GSK, Black

Badger Part Number:	Name	Description
I Series — Analog Cordless		
IPN96459	AC9105S	1L, Spkr, 5GSK, Ash
IPN964591	AC9105S	1L, Spkr, 5GSK, Black
IPN96559	AC9110S	1L, Spkr, 10GSK, Ash
IPN965591	AC9110S	1L, Spkr, 10GSK, Black
IPN96559HDKIT	RD9110	1L, Handset, Ash
IPN965591HDKIT	RD9110	1L, Handset, Black
IPN98459	AC9205S	2L, Spkr, 5GSK, Ash
IPN984591	AC9205S	2L, Spkr, 5GSK, Black
IPN98559	AC9210S	2L, Spkr, 10GSK, Ash
IPN985591	AC9210S	2L, Spkr, 10GSK, Black
IPN98559HDKIT	RD9210	2L, Handset, Ash
IPN985591HDKIT	RD9210	2L, Handset, Black
I Series — Analog Corded		
IPN33009	A101	1L, Lobby, 0GSK, Ash
IPN330091	A101	1L, Lobby, 0GSK, Black
IPN33309	A100	1L, Basic, 0GSK, Ash
IPN333091	A100	1L, Basic, 0GSK, Black
IPN33039	A102	1L, 0GSK, Ash
IPN330391	A102	1L, 0GSK, Black
IPN33739	A103	1L, 3GSK, Ash
IPN337391	A103	1L, 3GSK, Black
IPN33749	A103S	1L, Spkr, 3GSK, Ash
IPN337491	A103S	1L, Spkr, 3GSK, Black
IPN33139	A105	1L, 5GSK, Ash
IPN331391	A105	1L, 5GSK, Black
IPN33149	A105S	1L, Spkr, 5GSK, Ash
IPN331491	A105S	1L, Spkr, 5GSK, Black
IPN33239	A110	1L, 10GSK, Ash
IPN332391	A110	1L, 10GSK, Black
IPN33339	A110S	1L, Spkr, 10GSK, Ash
IPN333391	A110S	1L, Spkr, 10GSK, Black
IPN34749	A203S	2L, Spkr, 3GSK, Ash
IPN347491	A203S	2L, Spkr, 3GSK, Black
IPN34149	A205S	2L, Spkr, 5GSK, Ash
IPN341491	A205S	2L, Spkr, 5GSK, Black
IPN34359	A210S	2L, Spkr, 10GSK, Ash
IPN343591	A210S	2L, Spkr, 10GSK, Black

Teledex Diamond Series

This is the phone that started it all. In fact, more hotels use Teledex Diamond Series hotel phones than all other guest room telephones combined. With over 5 million in service worldwide, this corded analog phone is available in single or two-line models, with up to 10 programmable guest service keys, patented OneTouch voice mail retrieval technology, and an optional speakerphone. Expect to see this model in hotel rooms for years to come. Available in Black or Ash.



Badger Part Number:	Name	Description
Diamond Series — Analog Corded		
DIA65009	Diamond Lobby	1L, Lobby, 0GSK, Ash
DIA650091	Diamond Lobby	1L, Lobby, 0GSK, Black
DIA65309	Diamond	1L, Basic, 0GSK, Ash
DIA653091	Diamond	1L, Basic, 0GSK, Black
DIA65739	Diamond+3	1L, 3GSK, Ash
DIA657391	Diamond+3	1L, 3GSK, Black
DIA65139	Diamond+5	1L, 5GSK, Ash
DIA651391	Diamond+5	1L, 5GSK, Black
DIA65239	Diamond+10	1L, 10GSK, Ash
DIA652391	Diamond+10	1L, 10GSK, Black
DIA67059	Diamond L2-E	2L, 0GSK, Ash
DIA670591	Diamond L2-E	2L, 0GSK, Black
DIA67159	Diamond L2-5E	2L, 5GSK, Ash
DIA671591	Diamond L2-5E	2L, 5GSK, Black
DIA67259	Diamond L2-10E	2L, 10GSK, Ash
DIA672591	Diamond L2-10E	2L, 10GSK, Black

Badger Part Number:	Name	Description
Diamond Series — Analog Corded with Speakerphone		
DIA65749	Diamond+S-3	1L, Spkr, 3GSK, Ash
DIA657491	Diamond+S-3	1L, Spkr, 3GSK, Black
DIA65149	Diamond+S-5	1L, Spkr, 5GSK, Ash
DIA651491	Diamond+S-5	1L, Spkr, 5GSK, Black
DIA65339	Diamond+S-10	1L, Spkr, 10GSK, Ash
DIA653391	Diamond+S-10	1L, Spkr, 10GSK, Black
DIA67149	Diamond+L2S-5E	2L, Spkr, 5GSK, Ash
DIA671491	Diamond+L2S-5E	2L, Spkr, 5GSK, Black
DIA67359	Diamond+L2S-10E	2L, Spkr, 10GSK, Ash
DIA673591	Diamond+L2S-10E	2L, Spkr, 10GSK, Black
Wall Mount Kit — Must Be Ordered Separately		
P-WALLDIA-TG	Diamond WMK	Wall bracket, Ash
P-WALLDIA-TG1	Diamond WMK	Wall bracket, Black

Faceplates—NATIONAL ACCOUNT PACKAGE

Save with the Cetis national account package on selected Teledex, TeleMatrix, and Scitec brand telephones with your minimum 50-phone order.

- Free printing and installation of full-color faceplates with room numbers.
- Free speed dial key pre-programming.
- Free ground shipping within the Continental U.S.



TeleMatrix 9600/3300 Series

Beautifully engineered. 9600 Series phones are still the most popular cordless hotel phones in the world. 9600 Series has a proven record of rugged dependability, complemented by a rich feature set. Available in single and two-line analog or VoIP cordless configurations together with 3300 Series single and two-line analog and VoIP corded telephones with 7 optional standard handset accent colors, and matching 3300TRM or 3300IP-TRM trimline sets. Available in Black or Ash.



View our searchable electronic catalog at: www.badgercommunications.com

Teledex D Series

Fresh design. USB charging. Same faceplate!

How do you improve upon Diamond Series, the most popular hotel phone in the world for 33 years running? We began the development of D Series with a fresh new contemporary design, robust ergonomic open handset, and guest smart device USB charging ports, but maintained the same Diamond faceplate area ... so Diamond Series owners may easily upgrade with existing faceplates, or receive free faceplates with your 50+ phone order (Continental U.S. only).



Badger Part Number:	Name	Description	Badger Part Number:	Name	Description
D Series — Analog Corded			D Series — Analog Corded with Speakerphone and USB Charging Ports		
DA210N0L	D100LBY	1L, Lobby, 0 GSK, Ash	DA210S3DU	D100S3U	1L, Spkr, 3 GSK, USB, Ash
DA110N0L	D100LBY	1L, Lobby, 0 GSK, Black	DA110S3DU	D100S3U	1L, Spkr, 3 GSK, USB, Black
DA210N0D	D100	1L, Basic, 0 GSK, Ash	DA210S5DU	D100S5U	1L, Spkr, 5 GSK, USB, Ash
DA110N0D	D100	1L, Basic, 0 GSK, Black	DA110S5DU	D100S5U	1L, Spkr, 5 GSK, USB, Black
DA210N3D	D1003	1L, 3 GSK, Ash	DA210S10DU	D100S10U	1L, Spkr, 10 GSK, USB, Ash
DA110N3D	D1003	1L, 3 GSK, Black	DA110S10DU	D100S10U	1L, Spkr, 10 GSK, USB, Black
DA210N5D	D1005	1L, 5 GSK, Ash	DA220S5DU	D200L2S5EU	2L, Spkr, 5 GSK, USB, Ash
DA110N5D	D1005	1L, 5 GSK, Black	DA120S5DU	D200L2S5EU	2L, Spkr, 5 GSK, USB, Black
DA210N10D	D10010	1L, 10 GSK, Ash	DA220S10DU	D200L2S10EU	2L, Spkr, 10 GSK, USB, Ash
DA110N10D	D10010	1L, 10 GSK, Black	DA120S10DU	D200L2S10EU	2L, Spkr, 10 GSK, USB, Black
DA220N0D	D200L2E	2L, Basic, 0 GSK, Ash			
DA120N0D	D200L2E	2L, Basic, 0 GSK, Black			
DA220N5D	D200L25E	2L, 5 GSK, Ash			
DA120N5D	D200L25E	2L, 5 GSK, Black			
DA220N10D	D200L210E	2L, 10 GSK, Ash			
DA120N10D	D200L210E	2L, 10 GSK, Black			
D Series — Analog Corded with Speakerphone					
DA210S3D	D100S3	1L, Spkr, 3 GSK, Ash			
DA110S3D	D100S3	1L, Spkr, 3 GSK, Black			
DA210S5D	D100S5	1L, Spkr, 5 GSK, Ash			
DA110S5D	D100S5	1L, Spkr, 5 GSK, Black			
DA210S10D	D100S10	1L, Spkr, 10 GSK, Ash			
DA110S10D	D100S10	1L, Spkr, 10 GSK, Black			
DA220S5D	D200L2S5E	2L, Spkr, 5 GSK, Ash			
DA120S5D	D200L2S5E	2L, Spkr, 5 GSK, Black			
DA220S10D	D200L2S10E	2L, Spkr, 10 GSK, Ash			
DA120S10D	D200L2S10E	2L, Spkr, 10 GSK, Black			

Teledex Nugget Series

No frills. No extras. Just a quality hotel phone that fits any budget and will leave extra room on your nightstand. Teledex Nugget Series hotel phones combine classic design, easy-to-use functionality, and rugged durability into a small footprint that makes a large impact. Equipped with either 0 or 3 programmable guest service keys, a raised red LED message-waiting light, and a dial pad that is tucked away leaving extra room for a customizable faceplate. Choose Black or Ash.

Badger Part Number:	Name	Description
Nugget Series — Analog Corded		
NUG31039	Nugget	1L, Basic, 0GSK, Ash
NUG310391	Nugget	1L, Basic, 0GSK, Black
NUG31739	Nugget 3	1L, 3GSK, Ash
NUG317391	Nugget 3	1L, 3GSK, Black



Badger Part Number:	Name	Description
3100 Series — Analog Corded		
31009	3100LBY	1L, Lobby, 0GSK, Ash
310091	3100LBY	1L, Lobby, 0GSK, Black
31039	3100MWB	1L, Basic, 0GSK, Ash
310391	3100MWB	1L, Basic, 0GSK, Black
31139	3100MW5	1L, 5GSK, Ash
311391	3100MW5	1L, 5GSK, Black
31239	3100MW10	1L, 10GSK, Ash
312391	3100MW10	1L, 10GSK, Black
Wall Mount Kit — Must Be Ordered Separately		
P-WALL3100-TG	3100 WMK	Wall bracket, Ash
P-WALL3100-TG1	3100 WMK	Wall bracket, Black

Badger Part Number:	Name	Description
3100 Series — Analog Corded with Speakerphone		
31149	3100MWD5	1L, Spkr, 5GSK, Ash
311491	3100MWD5	1L, Spkr, 5GSK, Black
31339	3100MWD	1L, Spkr, 10GSK, Ash
313391	3100MWD	1L, Spkr, 10GSK, Black
32149	3102MWD5	2L, Spkr, 5GSK, Ash
321491	3102MWD5	2L, Spkr, 5GSK, Black
32359	3102MWD	2L, Spkr, 10GSK, Ash
323591	3102MWD	2L, Spkr, 10GSK, Black
TeleMatrix Trimline Series		
69119	1L Trimline	1L, 0GSK, Ash
691191	1L Trimline	1L, 0GSK, Black

Scitec Aegis-08 Series

Value never looked so good. Scitec brand Aegis-08 Series economy hotel phones are known and valued by hoteliers worldwide for their rugged, trouble-free performance. Single and two-line speaker and non-speakerphone models are available with options for 0, 3, 5, or 10 programmable guest service keys, and patented OneTouch message retrieval designed to keep your guest connected with a single touch of the lightbar.



Badger Part Number:	Name	Description
Aegis-08 Series — Analog Corded		
80101	Aegis-LB-08	1L, Lobby, 0GSK, Ash
80102	Aegis-LB-08	1L, Lobby, 0GSK, Black
80001	Aegis-P-08	1L, Basic, 0GSK, Ash
80002	Aegis-P-08	1L, Basic, 0GSK, Black
80301	Aegis-3-08	1L, 3GSK, Ash
80302	Aegis-3-08	1L, 3GSK, Black
80501	Aegis-5-08	1L, 5GSK, Ash
80502	Aegis-5-08	1L, 5GSK, Black
81001	Aegis-10-08	1L, 10GSK, Ash
81002	Aegis-10-08	1L, 10GSK, Black
Wall Mount Kit — Must Be Ordered Separately		
P99001	Aegis-08 WMK	Wall bracket, Ash
P99002	Aegis-08 WMK	Wall bracket, Black

Badger Part Number:	Name	Description
Aegis-08 Series — Analog Corded with Speakerphone		
80011	Aegis-PS-08	1L, Spkr, Basic, 0GSK, Ash
80012	Aegis-PS-08	1L, Spkr, Basic, 0GSK, Black
88031	Aegis-3S-08	1L, Spkr, 3GSK, Ash
88032	Aegis-3S-08	1L, Spkr, 3GSK, Black
88051	Aegis-5S-08	1L, Spkr, 5GSK, Ash
88052	Aegis-5S-08	1L, Spkr, 5GSK, Black
88101	Aegis-10S-08	1L, Spkr, 10GSK, Ash
88102	Aegis-10S-08	1L, Spkr, 10GSK, Black
89001	Aegis-TP-08	1L, Spkr, Basic, Ash
89002	Aegis-TP-08	1L, Spkr, Basic, Black
89051	Aegis-T5-08	2L, Spkr, 5GSK, Ash
89052	Aegis-T5-08	2L, Spkr, 5GSK, Black
89101	Aegis-T-08	2L, Spkr, 10GSK, Ash
89102	Aegis-T-08	2L, Spkr, 10GSK, Black

Badger Part Number:	Name	Description
9600 Series — VoIP Cordless		
96459IP	9600IPMWD5	1L, Spkr, 5GSK, Ash
964591IP	9600IPMWD5	1L, Spkr, 5GSK, Black
96559IP	9600IPMWD	1L, Spkr, 10GSK, Ash
965591IP	9600IPMWD	1L, Spkr, 10GSK, Black
96559IPHDKIT	Handset Kit IP	1L, Handset, Ash
965591IPHDKIT	Handset Kit IP	1L, Handset, Black
98459IP	9602IPMWD5	2L, Spkr, 5GSK, Ash
984591IP	9602IPMWD5	2L, Spkr, 5GSK, Black
98559IP	9602IPMWD	2L, Spkr, 10GSK, Ash
985591IP	9602IPMWD	2L, Spkr, 10GSK, Black
98559IPHDKIT	Handset Kit IP	2L, Handset, Ash
985591IPHDKIT	Handset Kit IP	2L, Handset, Black
9600 Series — Analog Cordless		
96459-N	9600MWD5	1L, Spkr, 5GSK, Ash
964591-N	9600MWD5	1L, Spkr, 5GSK, Black
96559-N	9600MWD	1L, Spkr, 10GSK, Ash
965591-N	9600MWD	1L, Spkr, 10GSK, Black
96559HDKIT-N	Handset Kit	1L, Handset, Ash
965591HDKIT-N	Handset Kit	1L, Handset, Black
98459-N	9602MWD5	2L, Spkr, 5GSK, Ash
984591-N	9602MWD5	2L, Spkr, 5GSK, Black
98559-N	9602MWD	2L, Spkr, 10GSK, Ash
985591-N	9602MWD	2L, Spkr, 10GSK, Black
98559HDKIT-N	Handset Kit	2L, Handset, Ash
985591HDKIT-N	Handset Kit	2L, Handset, Black
3300 Series Trimline — Analog Corded		
33119	3300TRM	1L, 0GSK, Ash
331191	3300TRM	1L, 0GSK, Black

Badger Part Number:	Name	Description
3300 Series — VoIP Corded		
33039IP	3300IP MWB	1L, Basic, 0GSK, Ash
330391IP	3300IP MWB	1L, Basic, 0GSK, Black
33149IP	3300IP MWD5	1L, Spkr, 5GSK, Ash
331491IP	3300IP MWD5	1L, Spkr, 5GSK, Black
33339IP	3300IP MWD	1L, Spkr, 10GSK, Ash
333391IP	3300IP MWD	1L, Spkr, 10GSK, Black
34149IP	3302IP MWD5	2L, Spkr, 5GSK, Ash
341492IP	3302IP MWD5	2L, Spkr, 5GSK, Black
34359IP	3302IP MWD	2L, Spkr, 10GSK, Ash
343591IP	3302IP MWD	2L, Spkr, 10GSK, Black
3300 Series Trimline — VoIP Corded		
33119IP	3300TRM-IP	1L, 0GSK, Ash
331191IP	3300TRM-IP	1L, 0GSK, Black
34159IP	3302TRM-IP	2L, 0GSK, Ash
341591IP	3302TRM-IP	2L, 0GSK, Black
3300 Series — Analog Corded		
33009	3300LBY	1L, Lobby, 0GSK, Ash
330091	3300LBY	1L, Lobby, 0GSK, Black
33039	3300MWB	1L, Basic, 0GSK, Ash
330391	3300MWB	1L, Basic, 0GSK, Black
33139	3300MW5	1L, 5GSK, Ash
331391	3300MW5	1L, 5GSK, Black
33239	3300MW10	1L, 10GSK, Ash
332391	3300MW10	1L, 10GSK, Black
33149	3300MWD5	1L, Spkr, 5GSK, Ash
331491	3300MWD5	1L, Spkr, 5GSK, Black
33339	3300MWD	1L, Spkr, 10GSK, Ash
333391	3300MWD	1L, Spkr, 10GSK, Black
34149	3302MWD5	2L, Spkr, 5GSK, Ash
341491	3302MWD5	2L, Spkr, 5GSK, Black
34359	3302MWD	2L, Spkr, 10GSK, Ash
343591	3302MWD	2L, Spkr, 10GSK, Black

TeleMatrix 3100 Series

Curved by design, TeleMatrix 3100 Series hotel phones match the sweeping contours of modern guest room smart devices and fixtures. Choose single or two-line analog desk and lobby models with optional speakerphone, patented OneTouch message retrieval, and options for 5 or 10 programmable guest service keys. Add TeleMatrix Trimline Series in single or two-line configurations for bathroom, and common area applications. Available in Black and Ash.





ONLINE STORE we've got you covered

www.badgercommunications.com

FREE STANDARD SHIPPING

*for all orders that qualify for standard ground shipping. some exclusions apply.

QUOTES

Easily view, create and modify quotes inside our online store. When you're ready you can convert to an order with the click of a button.

WHAT'S IN STOCK?

Our stock quantities are clearly displayed in real-time.

ORDER HISTORY

View the order history for your entire company from the ORDER HISTORY tab on our Online Store.

715-672-4200

The Badger Communications team is available Monday-Friday 8am-4:30pm.

Technical and Design Support

The Badger Support Team will help you understand which hardware and software your Avaya systems need to ensure your customer has the features they need.

Save time and headache on your next install by having the Badger team pre-program your next Avaya system.



TRAINING

Choose our introductory classes to refresh or take your first steps into the world of Avaya and IP Office.

You can even sell an IP Office and program it during training at Badger.

Scitec Emergency Series

Be prepared! Scitec emergency hotel phones help prepare your hotel to meet the communications needs of guests, hotel staff, and visitors when time matters most. Choose from our full line of Aegis-LBE-08 single-line feature telephones with Red emergency faceplate, 2510E single-line Red emergency desk set, or 2554E single-line Red emergency wall telephone models with optional message waiting light.

Badger Part Number:	Name	Description
Emergency Series — Analog Corded		
80103	Aegis-LBE-08	1L, 0GSK, Desk/Wall, Ash
80123	Aegis-LBE-08	1L, 0GSK, Desk/Wall, Black
25003	2510E	1L, 0GSK, Desk, Red
25403	2554E	1L, 0GSK, Wall, Red



Scitec 2500 Series

Get the job done with Scitec brand industry standard 2500 Series analog hotel phones, designed to operate in the most demanding hotel work and guest room environments. In the guest room, back office, hallways, elevators, physical training or poolside locations, Scitec 2510D and 2510E standard desk, 2554 wall, and 205T and 205T-MW trimline telephones are on the job. Available in Black, or Ash. 205T and 205T-MW also available in White.

Badger Part Number:	Name	Description
2500 Series — Analog Corded		
20521	205TMW	1L, Trimline, MW, Ash
20515	205TMW	1L, Trimline, MW, White
25001	2510D (no MW)	1L, Desk, Ash
25002	2510D (no MW)	1L, Desk, Black
25011	2510D MW	1L, Desk, MW, Ash
25012	2510D MW	1L, Desk, MW, Black
25101	2510D-e (no MW)	1L, Desk, Ash
25111	2510D-e MW	1L, Desk, MW, Ash
25401	2554W (no MW)	1L, Wall, Ash
25402	2554W (no MW)	1L, Wall, Black
25411	2554W MW	1L, Wall, MW, Ash
25412	2554W MW	1L, Wall, MW, Black



Scitec H2000 Series

An important connection. Scitec H2000 Series patient room telephones operate as a single point of contact for hospital, nursing home, or long-term care patients desiring to dial for services or communicate with family and friends. Available in a variety of one and two-piece analog and VoIP models, Scitec patient room phones serve as an important connection device for your patients, and provide years of dependable service for your staff.

Badger Part Number:	Name	Description
H2000 Series — Analog Corded & One-Piece Phones		
20005	H2000	1L, Trimline, White
20015	H2000VRI	1L, Trimline, VRI, White
21115	EH2000	Bedrail Mount, White
21105	H2001-00	1L, 1 Piece, Bedrail, White
21195	H2001-09	1L, 1 Piece, Bedrail, White



SIP-T49G

- 8" 1280 x 800 capacitive touch screen IPS LCD • Full-HD 1080p30 video call • HD Voice: HD handset, HD speaker
- 2 mega-pixel HD camera with privacy shutter • Built-in Bluetooth 4.0+ EDR for headsets and pairing mobile devices
- Built-in Wi-Fi (Dual-band:2.4GHz & 5GHz, 802.11a/b/g/n) • Dual-port Gigabit Ethernet • Supports 16 VoIP/SIP accounts
- HDMI output for connection to monitor • 2xUSB ports, 2.0 compliant, 3.0 compliant for camera/USB3.0 cable
- 3-way video conference, 5-way audio/video mixed conference • Onscreen keyboard, 29 one-touch DSS keys
- Caller ID with name, number and photo • BLF, DND, Intercom, Call hold, One-touch speed dial
- Dial plan, XML Browser, action URL/URI

BADGER PART NUMBER:

SIP-T49G



SIP-T49G

SIP-T23G

Enterprise HD IP Phone

- HD Voice: HD handset, HD speaker • 132x64-pixel graphical LCD • Supports 3 SIP accounts • Local 3-way conference
- Dual-port Gigabit Ethernet, Power over Ethernet (PoE) support • Dual-color LEDs • Headset, Wall mountable
- IPv6 support • Paper label free design • BLF, DND, Intercom, Call recording • XML/LDAP remote phonebook

BADGER PART NUMBER:

SIP-T23G



SIP-T23G

SIP-T27G

Business SIP Phone

- HD voice: HD handset, HD speaker • Yealink Optima HD voice • 3.66" 240x120-pixel graphical LCD with backlight
- Up to 6 SIP accounts • 3-way conference call • Paper label free design • PoE support • Headset, EHS support
- Supports expansion modules • Dual-color (red or green) illuminated LEDs for line status information
- LED for call and message waiting indication

BADGER PART NUMBER:

SIP-T27G



SIP-T27G

SIP-T29G

Enterprise HD IP Phone

- Yealink Optima HD voice: HD handset, HD speaker • 6 VoIP accounts • One-touch speed dial, redial • XML Browser
- 4.3" 480 x 272-pixel color display with backlight • Built-in a USB port, support Bluetooth headset through USB Dongle
- Supports 16 VoIP/SIP accounts • 3-way conference • Paper label free design • Power over Ethernet (PoE) support
- Headset, EHS support, Wall mountable • Supports expansion modules • Stand with 2 adjustable angles
- BLF, DND, Intercom, Call recording

BADGER PART NUMBER:

SIP-T29G



SIP-T29G

SIP-T40P

Business IP Phone

- Revolutionarily new design • Yealink Optima HD voice: HD handset, HD speaker • 3 line keys with LED
- 2.3" 132x64-pixel graphical LCD with backlight • Supports 3 VoIP/SIP accounts • 3-way conference
- Paper label free design • Power over Ethernet (PoE) support • Headset, EHS support, Wall mountable
- Integrated stand with 2 adjustable angles • BLF, DND, Intercom, Call recording • XML/LDAP remote phonebook

BADGER PART NUMBER:

SIP-T40P



SIP-T40P

SIP-T41P

Ultra-elegant IP Phone

- Revolutionarily new design • Yealink Optima HD voice: HD handset, HD speaker
- 2.7" 192x64-pixel graphical LCD with backlight • Dual-color (red or green) illuminated LEDs for line status information
- Intuitive user interface with icons and soft keys • Supports 6 VoIP/SIP accounts • 3-way conference
- Paper label free design • Power over Ethernet (PoE) support • Headset, EHS support, Wall mountable
- Integrated stand with 2 adjustable angles • BLF, DND, Intercom, Call recording • XML/LDAP remote phonebook

BADGER PART NUMBER:

SIP-T41P



SIP-T41P

SIP-T41S

Ultra-elegant SIP Phone

- HD voice: HD handset, HD speaker • 2.7" 192x64-pixel graphical LCD with backlight • Opus* codec support • USB 2.0
- Headset, EHS support • T4S Auto-P template unified • T4S firmware unified • PoE support • Up to 6 SIP accounts
- Paperless label design • Integrated stand with 2 adjustable angles • Wall mountable

BADGER PART NUMBER:

SIP-T41S



SIP-T41S

SIP-T42S

Reliable and Affordable SIP Phone for Business

- HD voice: HD handset, HD speaker • 2.7" 192x64-pixel graphical LCD with backlight • Up to 12 SIP accounts
- Paperless label design • PoE support • Headset, EHS support • Integrated stand with 2 adjustable angles
- Wall mountable • 3-way conference call • Dual-color (red or green) illuminated LEDs for line status information

BADGER PART NUMBER:

SIP-T42S



SIP-T42S

SIP-T46S

Revolutionary SIP Phone for Enhanced Productivity

- HD voice: HD handset, HD speaker • 4.3" 480 x 272-pixel color display with backlight • USB recording
- Up to 16 SIP accounts • Dual-port Gigabit Ethernet • Wi-Fi via WF40 • Bluetooth via BT40 • Paperless label design
- PoE support • Headset, EHS support • Supports expansion models • Stand with 2 adjustable angles

BADGER PART NUMBER:

SIP-T46S



SIP-T46S

SIP-T48S

Revolutionary SIP Phone with a 7-inch Touch Screen

- HD voice: HD handset, HD speaker • 7" 800 x 480-pixel color touch screen with backlight • Up to 16 SIP accounts
- Dual-port Gigabit Ethernet • Wi-Fi via WF40 • Bluetooth via BT40 • Paperless label design • USB recording
- PoE support • Headset, EHS support • Supports expansion models • Stand with 2 adjustable angles

BADGER PART NUMBER:

SIP-T48S



SIP-T48S

SIP-T21P E2

Business IP Phone

- Yealink HD Voice: HD handset, HD speaker • 132x64-pixel graphical LCD with backlight, 5-line data display
- Two-port 10/100M Ethernet Switch • Supports 2 VoIP/SIP accounts • Local 3-way conference
- Power over Ethernet (PoE) support • Headset, Wall mountable • 2 line keys with LED
- BLF, DND, Intercom, Call recording • XML/LDAP remote phonebook

BADGER PART NUMBER:

SIP-T21P E2



SIP-T21P E2

SIP-T19P E2

Business IP Phone

- 132 x 64-pixel graphical LCD • Single VoIP account • Two-port 10/100 Ethernet Switch, Power over Ethernet (PoE) support
- Full-duplex speakerphone • Headset, Wall mountable • XML remote phonebook





BADGER PART NUMBER:

SIP-T19P E2



SIP-T19P E2

Yealink T4S Series Ultra-elegant IP Phone

Feature	Phone	SIP - T48S	SIP - T46S	SIP - T42S	SIP - T41S
					
LCD		7" 800x480-pixel touch screen	4.3" 480x272-pixel color display	2.7" 192x64-pixel graphic display	2.7" 192x64-pixel graphic display
HD Voice		HD Codec HD Handset HD Speaker	HD Codec HD Handset HD Speaker	HD Codec HD Handset HD Speaker	HD Codec HD Handset HD Speaker
Speakerphone		Full-duplex	Full-duplex	Full-duplex	Full-duplex
HAC		✓	✓	✓	✓
Wideband Codec		Opus*, G.722	Opus*, G.722	Opus*, G.722	Opus*, G.722
Narrowband Codec		Opus*, G.711, G.729A/B, G.726, G.723.1	Opus*, G.711, G.729A/B, G.726, G.723.1	Opus*, G.711, G.729A/B, G.726, G.723.1	Opus*, G.711, G.729A/B, G.726, G.723.1
SIP Accounts		16	16	12	6
USB 2.0		✓	✓	✓	✓
Bluetooth Earphone via BT40		✓	✓	Pending	Pending
USB Recording		✓	✓	Pending	Pending
Wi-Fi via WF40		✓	✓	Pending	Pending
Call hold/Call transfer/ Call forward		✓	✓	✓	✓
3-way Conferencing		✓	✓	✓	✓
Smart Dialing		✓	✓	✓	✓
Remote Phonebook		✓	✓	✓	✓
LDAP Phonebook		✓	✓	✓	✓
Hot-desking		✓	✓	✓	✓
BLF/BLA		✓	✓	✓	✓
Power Saving		✓	✓	✓	✓
Screen Saving		✓	✓	X	X
Memory Keys		29 touch keys	27 (3 pages of 9 keys)	15 (3 pages of 5 keys)	15 (3 pages of 5 keys)
Gigabit		✓	✓	✓	X
PoE		✓	✓	✓	✓
Expansion Module		✓	✓	X	X
Open-VPN		✓	✓	✓	✓
Auto Provision		TFTP/FTP/HTTP/ HTTPS/PnP	TFTP/FTP/HTTP/ HTTPS/PnP	TFTP/FTP/HTTP/ HTTPS/PnP	TFTP/FTP/HTTP/ HTTPS/PnP

W56P

- High-end ID design • Exceptional HD sound with wideband technology • Up to 4 simultaneous voice calls
- Up to 5 DECT cordless handsets • Up to 5 Multiple Lines • 2.4" 240 x 320 color screen with intuitive user interface
- Up to 30 hours talk time, Up to 400 hours standby time • Quick charging: 10 mins charge time for 2 hours talk time
- Support USB charging • Headset connection via 3.5 mm jack • Charger wall mountable • New belt clip with better user experience

BADGER PART NUMBER:

W56P



W56P

W56H

- Exceptional handsfree talking • 2.4" 240 x 320 color screen with intuitive user interface • Headset connection via 3.5 mm jack
- Up to 30 hours talk time • Up to 400 hours standby time • Elegant keypad design with illumination and keypad lock

BADGER PART NUMBER:

W56H



W56H

W52P

- Exceptional HD sound with wideband technology • Up to 4 simultaneous external calls • OTA (Over-the-Air) update
- Up to 5 DECT cordless headsets • Up to 5 VoIP accounts • 1.8" color display with intuitive user interface
- 10 hours of talk time, 100 hours of standby time • Integrated PoE (Class 1) • Desktop or wall mountable

BADGER PART NUMBER:

W52P



W52P

W52H

- Cordless handset that can be paired with W52P DECT base station • Exceptional HD sound with wideband technology
- 1.8" color display with intuitive user interface • 3-way conference • Keypad lock, emergency call
- Phonebook search/input/export • 11 hours talk time, 120 hours of standby time
- Integrated PoE (Class 1) • Desktop or wall mountable

BADGER PART NUMBER:

W52H



W52H

RT10

- Up to 6 repeaters per base station • Automatic handover of calls between calls • 2 simultaneous calls per repeater
- Automatic registration method • Supports W52P
- Additional coverage between base station and handset, up to 50m indoors and 300m outdoors

BADGER PART NUMBER:

RT10



RT10

VoIP CONFERENCE PHONES

CP860

Professional IP Conference Phone

- Optima HD voice, Full duplex technology • 10-feet and 360 degree voice pickup
- 2xOptional expansion microphones for wider reception • 320ms echo cancellation, Background noise suppression
- Power over Ethernet (PoE) support • Connect to a mobile phone or PC for conference calls
- 192x64-pixel graphical LCD with backlight • Single VoIP account • 5-way conference • USB port, Call recording
- Caller ID with name, number • BLF, DND, Intercom, Multicast paging

BADGER PART NUMBER:

CP860



CP860

CPE80

Yealink Expansion Audio Conference Phone

- Optima HD voice, Full duplex technology • 10-feet (3-meters) 60°H voice pickup
- Capacitive mute touchpad with bicolor LED • Echo cancellation • For use with Yealink CP860

BADGER PART NUMBER:

CPE80



CPE80

EXP38**IP Phone Expansion Module**

- 38 programmable keys with dual color LEDs
- Supports speed dial, BLF/BLA, intercom, direct pickup, group pickup, conference, hold, transfer, group listening, call return, voicemail

BADGER PART NUMBER:**EXP38**

EXP38

EXP39**IP Phone Expansion Module**

- 160 x 320 graphic LCD • 20 physical keys each with a dual-color LED
- 20 additional keys through page switch • Supports BLF/BLA, speed dialing, call pickup, etc.

BADGER PART NUMBER:**EXP39**

EXP39

EHS36**IP Phone Wireless Headset Adapter**

- Supports Yealink SIP-T28P & SIP-T26P • Fully compatible with Jabra and Plantronics wireless headsets
- 1xRJ-12(6P6C), 1xRJ-45(8P8C) & 1x3.5mm output port

BADGER PART NUMBER:**EHS36**

EHS36

YHS32**Headset supporting MIC noise cancelling**

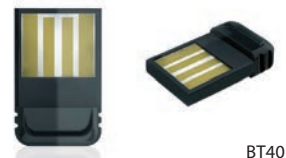
- 1x RJ9 headset jack, QD Adapter • 330° adjustable microphone boom
- Compliant with the full range of Yealink IP phones

BADGER PART NUMBER:**YHS32**

YHS32

BT40**Bluetooth® USB Dongle**

- V4.0+HS system • Enhanced Data Rate (edr) compliant for both 2Mbps and 3Mbps
- A2DP technology • Wideband audio support • 32 feet operating distance
- Answer and terminate calls through Bluetooth® headset
- Multipoint technology for connecting with 4 Bluetooth® devices at once
- Range Frequency 2.402GHz-2.480GHZ • Built in security features
- Compatible with Windows 98SE, Windows 2000, Windows XP, Windows Vista

BADGER PART NUMBER:**BT40**

BT40

EXP40**Yealink Expansion Module**

- Rich visual experience with 160 x 320 graphic LCD • 20 physical keys each with dual-color LCD
- 2 independent control keys are used for fast switch pages
- Stand with 2 adjustable angles and is wall mountable

BADGER PART NUMBER:**EXP40**

EXP40

DuraFon-SIP™ System

The DuraFon-SIP Cordless Phone System delivers industry-leading range, durability and reliability in a flexible, multi-mode communications platform that provides users with the lowest total cost of ownership in the industry. It's ideal for companies using an existing IP-PBX system or hosted VoIP services that require reliable, long-range communications over large areas or in harsh environments where Wi-Fi or DECT phones can't reach.

Durable, Long-Range Cordless Phone

- Up to 12 Floors In-Building Penetration
- Up to 250,000 sq. ft. of Facility Coverage
- Up to 3,000 Acres of Property, open land coverage

DuraFon-SIP System

Durable, Long-Range SIP Cordless Phone System

- Long-range, proven durability w/ruggedized design
- Multi-mode communications – base supports up to 4 concurrent calls (4-SIP or 3-SIP/1-PSTN)
- Works with any IP-PBX that supports the standard IP protocol
- Independent 2-way intercom & push-to-talk broadcast
- Secure 900MHz (902-928MHz) FHSS
- Supports up to 10 SIP accounts/base
- Web-based phone book & system configuration

Includes:

(1) Base Station w/antenna, (1) Base AC/DC adapter, (1) Handset w/antenna, (1) Long antenna, (1) Li-ion battery pack, (1) Desktop charger, (1) Charger AC/DC adapter, (1) Quick guide, (1) Telephone cord, (1) RJ45 cable

BADGER PART NUMBER:

DuraFon-SIP-System



DuraFon-SIP-System

DuraFon-SIP Base Station

For Use with DuraFon-SIP Systems Handsets

Includes:

(1) Base Unit w/antenna, (1) Base AC adapter, (1) Charger AC/DC adapter, (1) Quick guide, (1) Telephone cord, (1) RJ45 cable



DuraFon-SIP Handset

For Use with DuraFon-SIP System Base Station

Includes:

(1) Handset w/antenna, (1) Long antenna, (1) Li-ion battery pack, (1) Desktop charger, (1) Charger AC/DC adapter, (1) Quick guide



DuraFon Pro System

Industrial Cordless Phone System

- Multiple handsets (up to 90) • 6 hours talk time, 50 hours stand-by • Auto-attendant
- Multiple lines (4-ports / lines per base unit) • Easy to use • Expandable to 8 base units
- Ability to broadcast to handsets via analog port or line as well as from another PRO or DuraWalkie handset directly
- Works behind any analog port of a PBX, phone system or analog phone line
- IP-PBX • Will work with DuraWalkie handsets • Durable • Reliable
- Optional external antenna for indoor use in warehouses and manufacturing plant or outdoor use for farms and car lots
- Includes: 1 DuraFon PRO Base Unit, 1 DuraFon PRO Handset, 1 Li-Ion Battery Pack, 1 AC Charging Cradle, 1 Belt Clip, 1 Optimal Performance Antenna, 1 Low-Profile Antenna

BADGER PART NUMBER:

DuraFon-Pro

DuraFon Pro PIA Kit

Professional Installer Kit Includes:

- 1 Base Unit • 4 Handsets/Chargers • 8 Lithium-Ion Batteries
- 4 DuraPouches • 4 Belt Clips
- Handsets include: 1 Short and 1 Tall Antenna, Documentation and Appropriate AC Adapters

BADGER PART NUMBER:

DuraFon-Pro-PIA

DuraFon Pro PIB20L Kit

Professional Installer Kit with High-Gain Antenna and Lightning Protection Kit

Includes:

- 1 Base Unit • 4 Handsets • 8 Lithium-Ion Battery Packs
- 4 Charging Cradles • 4 DuraPouches • 4 Belt Clips
- Handsets include: 1 Short and 1 Tall Antenna, Documentation and Appropriate AC Adapters, 1 External Antenna (AK20L or AK10L)
- PRO-PIB20L includes SN-ULTRA-AK20L (60' coax) or PRO-PIB10L includes SN-ULTRA-AK10L (30' coax)
- Lightning protection kit

BADGER PART NUMBER:

DuraFonProPIB20L

DuraFon Pro-OHC4 Kit

Long-Range cordless phone System

- Multi-Line (4 ports / line per base unit)
- Supports up to 90 DuraFonPRO-OHC or DuraWalkie handsets
- Works behind any analog port (PBX, VoIP, PSTN, FXS or POTS)
- Expandable to (8) bases for (32) line/ports

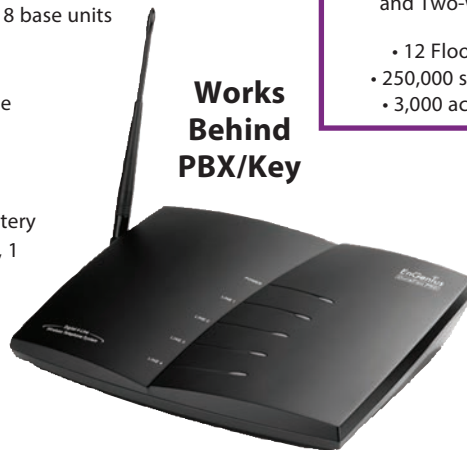
BADGER PART NUMBER:

DURAFON-PRO-OHC4

DURAFON-PRO-OHC4



**Works
Behind
PBX/Key**



**4 to 32 lines
90 handsets**

Long-Range

Cordless Phone
and Two-way Radio up to:

- 12 Floors (in-building)
- 250,000 sq. ft. (warehouse)
- 3,000 acres (ranch/farm)



DuraFon-Pro

DuraFon Pro Handset

For Use with DuraFon PRO Systems and DuraWalkie Handsets

- The PRO System can support up to 90 DuraFon PRO and/or DuraWalkie handsets
- Handsets function as telephones and two-way radios
- Two-way radio functions: full-duplex intercom or half-duplex broadcast
- DuraFon Pro Handset • 6 Hour Talk Time/50 Hour Stand-by Time
- 80 Minute Fast-Charge Charging Cradle • 1 Lithium-Ion Battery Pack
- Handset AC Adapter
- Telephone calls can be transferred from a PRO handset to a DuraWalkie handset
- Includes: 1 Desktop Charging Cradle, 1 Li-Ion Battery Pack, 1 Low Profile Handset Antenna, 1 High-Performance Handset Antenna

BADGER PART NUMBER:

DuraFon-Pro-HC

DuraFon Pro Base Unit

For Use with DuraFon PRO Systems Handsets

Includes:

- 1 Base Unit, documentation and appropriate AC adapters

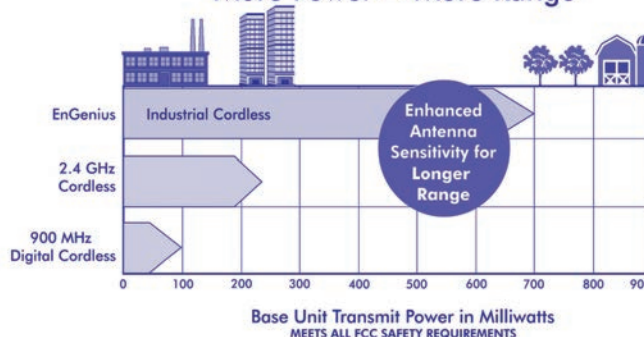
BADGER PART NUMBER:

DuraFon-Pro-BU

NEW FEATURE

Call transfer to
DuraWalkie Handset

More Power = More Range



FreeStyl 1

Slim Design Long Range Telephone

The FreeStyl 1 long range telephone offers users a slim and lightweight handset design, with ranges of up to 6 floors of building penetration, 25,000 square feet and 10 acres. The FreeStyl 1 is the perfect choice for users who do not require our rugged DuraFon, but prefer something with a little more "Styl".

- 6 floors in-building penetration • 25,000 sq. ft. of facility coverage
- 10 acres of property, open land coverage • Single Line (1-ports / line per base unit)
- Multiple handsets (up to 9 per base unit)
- Works behind any analog port (PBX, VOIP, PSTN, FXS or POTS)
- Supports portable handset models FreeStyl1HC only
- Speakerphone (handset & base unit)
- Wireless full duplex intercom between FreeStyl base & other FreeStyl handsets
- PTT (push to talk) Broadcast PA between FreeStyl base & FreeStyl handsets
- Slim & lightweight handsets designed for residential and office environments
- Easy to install and easy to use • 4.5 hours talk time, 70 hours stand-by time

FreeStyl 1 System Includes:

- One (1) FreeStyl 1 Base Unit w/ AC adapter
- One (1) FreeStyl 1 Handset
- One (1) Li-Ion Battery Pack
- One (1) Low Profile Antenna

BADGER PART NUMBER:

FREESTYL1

FreeStyl 1



FreeStyl1

FreeStyl 1 Handset

- For use with FreeStyl 1 System Only
- Slim and lightweight design
- Handset function as telephone and wireless intercom
- Speakerphone • 4-Line liquid crystal display
- 2.5mm headset port with headset call control

Includes:

- (1) Desktop Charging Cradle w/AC Adapter
- (1) Li-Ion Battery Pack
- (1) Low Profile Handset Antenna

BADGER PART NUMBER:

FREESTYL1HC

FreeStyl1Pouch

Handset Pouch with built in belt clip assembly for the Freestyl1 handset.

BADGER PART NUMBER:

FREESTYL1POUCH

FreeStyl1ANTB

Antenna for FreeStyl1 base unit, DuraFonPro and DuraFon1x base units.

BADGER PART NUMBER:

FREESTYL1ANTB

FreeStyl1HSA1

Long antenna for Freestyl1 handset

BADGER PART NUMBER:

FREESTYL1HSA1

FreeStyl1HSA2

Low profile (short) antenna for Freestyl1 handset.

BADGER PART NUMBER:

FREESTYL1HSA2

FreeStyl1CH

Desktop Charger and AC Adapter for Freestyl1 handset.

BADGER PART NUMBER:

FREESTYL1CH

FreeStyl 1 Handset Battery

FreeStyl 1 Replacement Battery

- Replacement/Spare Battery Pack - Li-ion 3.7V/1100mAh
- Replacement of the standard battery for the FreeStyl 1 handsets only

BADGER PART NUMBER:

FREESTYL1BA

Extended Use Lithium-Ion Battery

- Extended talk time
- Use as a spare or replacement battery
- Easily swappable

BADGER PART NUMBER:

FREESTYL1BA

FREESTYL1BA



FreeStyl1BAE

FreeStyl Battery Pack

Lithium battery with extended talk time.

BADGER PART NUMBER:

FREESTYL1BAE

FreeStyl 2

Extreme Range Scalable Cordless Phone System

- Scalable: supports up to 9 simultaneous handsets (sold separately)
- High Power/High Sensitivity for extreme wireless range and connectivity
- Speakerphone in handset
- 2-Way Intercom
- Simultaneous broadcast to multiple handsets from any handset

BADGER PART NUMBER:

FREESTYL2



Longest range cordless phone and 2-way radio system with range up to: 12 floors in-building; 250,000 square feet in a warehouse or manufacturing plant; and 3,000 acres on a farm or ranch. Two-way radio and broadcast are independent of the base, so you can take handsets anywhere for 2-way communications and broadcast. Works behind any analog port of a PBX or Key system or with any analog line. Expandable up to 4 lines (1 line per base) and 36 handsets. Compatible with IP-PBX systems. Ideal for office, farming/agriculture, warehouse, manufacturing, construction and hospitality use.

Avaya
COMPLIANT
TESTED

Developer Connection
Program

2-Way Radio
Loud Broadcast



DuraFon 1X

DuraFon 1x Base Unit Plus (1) Handset and Charger

- Includes: (1) DuraFon 1X Base Unit, One DuraFon 1X Handset, (1) Li-Ion Battery Pack, One AC Charger, Low-Profile Antenna, Optimal Coverage Antenna
- Range: Up to 12 floors in-building penetration; 250,000 square feet in warehouse and manufacturing; 3,000 acres on farms or ranches
- Loud Broadcast/Intercom/Page (1 to 1, 1 to group, 1 to all)
- DSS with Frequency-Hopping
- Full-Duplex 2-Way Radio, independent of the base unit
- Multi-Line (up to 4 lines, one line per base)
- Multi-Handset (up to 36, nine handsets per base)
- Works Off of Any Analog Port or Line of PBX
- 6-Hour Talk-Time, 50 Hours Stand-By Time
- Optional External Antenna for indoor use in warehouses and manufacturing plants or outdoor use on farms or car lots
- Caller ID w/Call Waiting, 30-Number Speed Dial
- Programmable PBX Function Soft Key
- Most Durable Cordless Phone Available
- Handset speakerphone

BADGER PART NUMBER:
DURAFON1X

DURAFON1X



DuraFon 1X-PIDW

DuraFon 1X & Walkie Bundle includes:

- 1 DuraFon 1X base • 1 DuraFon 1X handset
- 4 DuraWalkie 1X handsets • 10 batteries • 5 durapouches
- 5 beltclips • 5 charging cradles and adapters

BADGER PART NUMBER:
DURAFON1X-PIDW

DuraFon-HSA3

Optimal Handset Antenna

- Compatible with all DuraFon Handsets

BADGER PART NUMBER:
DURAFON-HSA3

DuraFon 1X-HC

Additional DuraFon 1x Handset and Charger

Includes:

- DuraFon 1X Handset
- One Li-Ion Battery
- Optimal Coverage Antenna
- Low Profile Antenna
- AC Charger

BADGER PART NUMBER:
DURAFON1X-HC

DURAFON1X-HC

With Speakerphone



DuraFon 1X-BU

DuraFon 1X Base Unit

- One DuraFon 1X Base Unit
- AC Charger

BADGER PART NUMBER:
DURAFON1X-BU



DURAFON1X-BU

DuraFon Charging cradle

- Stay charged
- Compact design
- Spare battery pack slot
- Compatibility

BADGER PART NUMBER:
DURAFON-CC



DURAFON-CC

DuraFon Desktop Charger Adapter

- Stay charged
- Compatibility
- Replace when needed

BADGER PART NUMBER:
DURAFON-CH



DURAFON-CH

DuraFon Low Profile HC Antenna

- Low Profile
- Compatible
- Easily Swappable
- Replace when needed

BADGER PART NUMBER:
DURAFON-HSA2



DURAFON-HSA2

DuraWalkie

Industrial Cordless 2-Way Radio Handset

- Multiple handsets (up to 90)
- Ability to broadcast to another PRO or DuraWalkie handset directly
- Durable • Reliable • Easy to use • No FCC license fees • No Airtime fees
- 6 hours talk time, 50 hours stand-by time
- Will work with DuraWalkie or DuraFon PRO handsets
- Telephone calls can be transferred from a PRO to a DuraWalkie handset
- No monthly fees • No outbound line access

Includes:

- 1 DuraWalkie Handset • 1 Li-Ion Battery Pack
- 1 AC Charging Cradle • 1 Belt Clip
- 1 Optimal Performance Antenna
- 1 Low-Profile Antenna

BADGER PART NUMBER:

DuraWalkie



DURAWALKIE-1X

DuraWalkie 1X

DuraFon 1X 2-Way Radio Only

The optional DuraWalkie 1X allows users of the DuraFon 1X system a choice in handsets. The DuraWalkie 1X is a 2-way radio only handset that works only with the DuraFon 1X system.

BADGER PART NUMBER:

DURAWALKIE-1X

DuraPouch-EX

Dura-Pouch

- Vinyl wearing style
- Clear front plastic cover
- Requires and attaches to DuraFon-BC, beltclip.



DuraPouch-EX

BADGER PART NUMBER:

DuraPouch-EX

Antenna Splitter

- Covers a wider distance
- Durable
- Supports up to two (2) additional handsets

BADGER PART NUMBER:

SN-ULTRA-AS

DuraFon-BA

- Lithium-Ion Battery

BADGER PART NUMBER:

DuraFon-BA



DuraFon-BA

DuraFon-BC

- Belt Clip

BADGER PART NUMBER:

DuraFon-BC

Long-Range office cordless phone handset

- Long range coverage
- Sleek design with speakerphone in handset
- 2-way handset-to-handset communication
- 2.5 mm headset port
- Up to 50 hours stand by time
- Up to 8 hours of talk time
- Works with DuraFon Pro and DuraFon 1X

BADGER PART NUMBER:

DURAFON-OHC

DURAFON-OHC



Longest Range Cordless Phone & 2-Way Radio System

**Voice
Quality
Louder &
Clearer than
Ever!**

**Works
Behind
PBX/Key**



Lithium-Ion
Battery
for
6 HOURS
TALK TIME

50 HOURS
STANDBY TIME

up to 4 bases
9 handsets

**4X
More
POWER
than
2.4 GHz
Phones**

DuraFon 1x/DuraWalkie Kit

Business Telephone & 2-Way Radio System

- (1) DuraFon 1X Base unit & (1) Handset
- (4) DuraWalkie 1X Handsets, (5) Charging Cradles w/adapters
- (5) DuraPouch Phone Cases • (5) Belt Clips
- (10) Lithium Ion Battery Packs (5 Spare)

BADGER PART NUMBER:

DURAFON1X-PIDW



DURAFON1X-PIDW

Expandable System Design

- EnGenius is Flexible - Each DuraFon 1X Base Unit Can Support Up to 9 Handsets (36 handsets with (4) 1x Base Units)
- Each DuraFon 1X Handset Can Be Registered to up to 4 Base Units (4-Lines or Extensions)
- Expandable up to 4 bases and 9 handsets
- Additional Handsets are Available Separately
- 1-Year Warranty

For IP-Centrex/Hosted Services and Open Source PBX Users

Businesses large and small are discovering the proven efficiencies and cost benefits of a SIP-based communications system. A pioneer in world-class telephony technology solutions, Panasonic now offers a wide range of SIP endpoints—from feature-rich desktop models to cordless options that let you cost-effectively outfit an entire office. Engineered with extensive, intuitive provisioning options, the Panasonic line of SIP phones features high-definition audio (G.722) and plug and play simplicity to get you up and running right away.

KX-TGP600

SIP Cordless Phone System

- A Complete SIP Cordless Solution at a Very Reasonable Price
- Includes one KX-TPA60 Standard Cordless Phone
- Mix and Match up to Eight Panasonic Cordless and Desktop DECT Phones in any Combination
- Capacity for up to Eight Concurrent Calls
- Eliminates Additional Wiring Charges
- Designed for Use with Preferred SIP Service Providers
- Noise Reduction System for Use in Noisy Environments

BADGER PART NUMBER:

KX-TGP600



KX-TGP600

KX-TPA60

Standard Cordless Phone

- 1.8" Color LCD with Backlight
- High-definition Audio (G.722)
- 500 Phone Book Addresses
- 20 Last Numbers Dialed Memory
- Noise Reduction System for Use in Noisy Environments
- Talk Time of Up To 11 hours

BADGER PART NUMBER:

KX-TPA60



KX-TPA60

KX-TPA65

- Desktop DECT Phone
- 1.8" Color LCD with Backlight
- Color LED Indicator (blue)
- High-definition Audio (G.722)
- Integrated Headset Jack
- Easy Installation Without Wired LAN
- Up to 500 Phone Book Addresses

BADGER PART NUMBER:

KX-TPA65



KX-TPA65

KX-UDT121

Cordless Compact Phone

- High-Definition Audio (G.722)
- Full Duplex Hands-free Capability
- Noise Reduction System for Use in Noisy Environments
- Simple Configuration
- Over the Air Firmware Updates
- Bluetooth® Support

BADGER PART NUMBER:

KX-UDT121



KX-UDT121

KX-UDT131

Cordless Rugged Phone

- IP65-level dust and water resistance
- High-Definition Audio (G.722)
- Full Duplex Hands-free Capability
- Noise Reduction System for Use in Noisy Environments
- Simple Configuration
- Over the Air Firmware Updates
- Bluetooth® Support

BADGER PART NUMBER:

KX-UDT131



KX-UDT131

KX-A406

Wireless Repeater

For businesses that require greater indoor coverage, the KX-A406 Wireless Repeater expands the indoor communication area from the standard 164 feet (50m) to approximately 656 feet (200m), depending on the environment.

BADGER PART NUMBER:

KX-A406



KX-A406

KX-HDV130

Basic SIP Phone

- 2-line SIP Phone
- High-definition Audio (G.722)
- Full-Duplex Speaker Phone
- Designed for Use with Preferred SIP Service Providers
- Supports Two SIP Accounts
- Dual LAN Ports

BADGER PART NUMBER:

KX-HDV130



KX-HDV130

KX-HDV230

Standard SIP Phone

- Supports 6 SIP Accounts
- 2.3" Graphical Display Main LCD
- High-definition Audio (G.722)
- 5" Self-labeling LCD with Flexible Function Keys
- Dual Gigabit Ethernet Ports
- Plug and Play Configuration

BADGER PART NUMBER:

KX-HDV230



KX-HDV230

KX-HDV330

Business SIP Phone

- Supports 12 SIP Accounts
- 4.3" color TFT LCD with Touch Screen Display
- High-definition Audio (G.722)
- Dual Gigabit Ethernet Ports
- Plug and Play Configuration
- Full-duplex Speaker Phone

BADGER PART NUMBER:

KX-HDV330



KX-HDV330

KX-HDV20

Expansion Module

- Up to 40 flexible function keys

BADGER PART NUMBER:

KX-HDV20



KX-HDV20

KX-UTG SERIES

KX-UTG200B

- 3.5-inch, QVGA 320*240 color graphical TFT LCD • 2 Gigabit Ethernet, class 2 Power over Ethernet (PoE)
- Full duplex speakerphone, Eight-level handset/speaker/headset volume, nine ringtones, nine-level ringer volume, headset port, electric hook switch control port
- 24 programmable keys (three pages of eight), navigator and cancel keys
- Four SIP accounts, IPv4/IPv6 versions, DHCP clients, DNS, HTTP/HTTPS, SNTP client, VLAN (802.1q) Qos (DiffServ)
- RFC 3261 Standard SIP Server, BroadSoft, Metaswitch® and Digium®

BADGER PART NUMBER:

KX-UTG200B



KX-UTG200B

KX-UTG300B

- 5-inch, WVGA 800*480 pix, color graphical TFT LCD with capacitive, single touchscreen
- 2 Gigabit Ethernet, class 2 Power over Ethernet (PoE)
- Full duplex speakerphone, eight-level handset/speaker/headset volume, nine ringtones, nine-level ringer volume, headset port, electric hook switch control port
- 24 programmable keys (three pages of eight), navigator and cancel keys
- Six SIP accounts, IPv4/IPv6 versions, DHCP clients, DNS, HTTP/HTTPS, SNTP client, VLAN (802.1q) Qos (DiffServ)
- Up to two expansion modules can be linked enabling you to see up to 36 extensions per module for an additional 72 keys (96 keys total)

BADGER PART NUMBER:

KX-UTG300B



KX-UTG300B

KX-UTA336B

Expansion Module

- Supported on KX-UTG300 Only
- (2) expansions available
- (1) General Use (Call Recording, Headset, USB Hub, etc.)
- 36 feature keys (12 physical keys)

BADGER PART NUMBER:

KX-UTA336B



KX-UTA336B



By
Telefield

RCA 2-LINE, 4-LINE & VoIP BUSINESS TELEPHONES

RCA 2-Line Business Phones

Corded & cordless options available

- Call waiting caller ID
- Call conferencing
- Digital answering system
- Works great alone or build a system
- Full duplex speakerphone
- Expandable up to 10 devices
- 60 minutes of recording time



BADGER PART NUMBER:	Description
25212	Cordless with Caller ID
25252	Cordless with Digital Answering System
25270RE3	Corded/Cordless Combination with Wireless Headset
25255RE2	Corded/Cordless Combination
25260	Corded Expandable Deskphone
25055RE1	Cordless Accessory Handset

RCA 4-Line Business Phones

Corded & cordless options available

- Call waiting Caller ID
- Call conferencing
- Speakerphone
- Digital answering system
- Auto attendant
- Mix and match to build a system
- Expandable to 16 devices
- 60 minutes of recording time



BADGER PART NUMBER:	Description
25423RE1	Corded Speakerphone (No CID)
25424RE1	Corded Speakerphone with Caller ID
25425RE1	Corded Speakerphone with Auto Attendant

BADGER PART NUMBER:	Description
25420	Cordless Expandable Deskphone
H5401RE1	Cordless Accessory Handset

RCA IP170

VoIP Wireless Deskphone

- HD Voice • DECT 6.0 Interference Free Technology
- Full Duplex Speakerphone with volume control
- Do Not Disturb • VIP Ringtones • Visual Ringer
- 3-Way Call Conferencing • Call Transfer
- Add additional IP060 and IP070 to create a wireless office
- Compatible with Asterisk, Broadsoft, PortaOne and other softswitch platforms



BADGER PART NUMBER:	Description
IP170	VoIP Wireless Phone System

RCA IP070

VoIP Wireless Accessory Deskphone

- HD Voice • Full Duplex Speakerphone with volume control • Do Not Disturb
- VIP Ringtones • Visual Ringer
- 3-Way Call Conferencing • Call Transfer
- Compatible with Asterisk, Broadsoft, PortaOne and other softswitch platforms
- Compatible with RCA IP170 and IP160



BADGER PART NUMBER:	Description
IP070	VoIP Wireless Accessory Deskphone

RCA IP160

VoIP Cordless Phone

- HD Voice • DECT 6.0 Interference Free Technology
- Cordless • Full Duplex Speakerphone with volume control
- 6 Line Appearances • Do Not Disturb • VIP Ringtones
- Visual Ringer • 3-Way Call Conferencing • Call Transfer
- Add additional IP060 and IP070 to create a wireless office
- Compatible with Asterisk, Broadsoft, PortaOne and other softswitch platforms



BADGER PART NUMBER:	Description
IP160	VoIP Cordless Phone

RCA IP060

VoIP Cordless Accessory Handset

- HD Voice • DECT 6.0 Interference Free Technology • Cordless • Full Duplex Speakerphone • 6 Line Appearances
- Do Not Disturb • VIP Ringtones • Visual Ringer
- 3-Way Call Conferencing • Call Transfer
- Compatible with Asterisk, Broadsoft, PortaOne and other softswitch platforms



BADGER PART NUMBER:	Description
IP060	VoIP Cordless Accessory Handset

View our searchable electronic catalog at: www.badgercommunications.com

VoIP BUSINESS TELEPHONES



RCA IP110

VoIP Business Phone

- HD Voice • Full Duplex Speakerphone with volume control
- 2 Line Appearances • Do Not Disturb • VIP Ringtones
- Visual Ringer • 3-Way Call Conferencing • Call Transfer
- Compatible with Asterisk, Broadsoft, PortaOne and other softswitch platforms



IP110

BADGER PART NUMBER:	Description
IP110	VoIP Business Phone

RCA IP120

VoIP Business Phone

- HD Voice • Full Duplex Speakerphone with volume control • 3 Line Appearances
- Do Not Disturb • VIP Ringtones • Visual Ringer
- 3-Way Call Conferencing • Call Transfer
- Compatible with Asterisk, Broadsoft, PortaOne and other softswitch platforms



IP120

BADGER PART NUMBER:	Description
IP120	VoIP Business Phone

RCA IP115

VoIP Business Phone

- HD-Voice • Power over Ethernet
- 2-Line Appearances • VIP Ringtones
- Selectable Ringtones • 3-Way Call Conferencing
- Caller ID • Call Transfer
- Phonebook/Directory Memory
- Compatible with Asterisk, Broadsoft, PortaOne and other softswitch platforms



IP115

BADGER PART NUMBER:	Description
IP115	VoIP Business Phone

RCA IP125

VoIP Business Phone

- HD Voice • Full Duplex Speakerphone with volume control
- 3 Line Appearances • Do Not Disturb
- VIP Ringtones
- Visual Ringer • 3-Way Call Conferencing
- Call Transfer
- Supports Power Over Ethernet
- Compatible with Asterisk, Broadsoft, PortaOne and other softswitch platforms



BADGER PART NUMBER:	Description
IP125	VoIP Business Phone

RCA IP150

VoIP Touchscreen Telephone

- 7" Capacitive Touchscreen Display
- Security Camera Access and Control
- Phonebook syncing with Microsoft Outlook and Google Contacts
- Full-duplex speakerphone with volume control
- 6 line appearances • VIP ringtones
- Do Not Disturb • Backlit keypad • Visual ringer
- Monitor multiple locations and open doors remotely
- Compatible with Asterisk, Broadsoft, PortaOne and other softswitch platforms



IP150

BADGER PART NUMBER:	Description
IP150	VoIP Touchscreen Telephone

RCA IPX500

Intelligent Business Phone

- 5" multi-touch capacitive touchscreen
- 12-key dialpad, volume, mute, speakerphone and headset keys • Full-duplex speakerphone
- MWI (message waiting indicator) LED
- Integrated Bluetooth 2.1 • 2-port Ethernet switch 10/100Mbps • Power over Ethernet (IEEE 802.af), Class 3 USB 2.0 • Dedicated RJ-9 port for headsets
- 4-Angle adjustable base • Android 4.2.2
- Google Accounts support • Call handling
- Live, real-time remote support capable
- Compatible with Asterisk, Broadsoft, PortaOne and other softswitch platforms



IPX500

BADGER PART NUMBER:	Description
IPX500	Intelligent Business Phone



ONLINE STORE we've got you covered

www.badgercommunications.com

FREE STANDARD SHIPPING

*for all orders that qualify for standard ground shipping. some exclusions apply.

QUOTES

Easily view, create and modify quotes inside our online store. When you're ready you can convert to an order with the click of a button.

WHAT'S IN STOCK?

Our stock quantities are clearly displayed in real-time.

ORDER HISTORY

View the order history for your entire company from the ORDER HISTORY tab on our Online Store.

715-672-4200

The Badger Communications team is available Monday-Friday 8am-4:30pm.

Technical and Design Support

The Badger Support Team will help you understand which hardware and software your Avaya systems need to ensure your customer has the features they need.

Save time and headache on your next install by having the Badger team pre-program your next Avaya system.



TRAINING

Choose our introductory classes to refresh or take your first steps into the world of Avaya and IP Office.

You can even sell an IP Office and program it during training at Badger.

Spectralink 7000 Portfolio Wireless DECT Handsets

Cost-effective, flexible and user-friendly Enterprise Mobile solutions.

The Spectralink 7000 Portfolio is built on the international DECT (Digital Enhanced Cordless Telecommunications) standard, providing a cost-effective, highly-secure and reliable wireless mobile communication solution.

- Dramatically improve responsiveness and productivity of mobile workers - anytime, anywhere within the work environment
- Maximize employee availability using high quality feature rich, reliable and durable handsets
- Support integration with an extensive list of third-party applications to maximize performance and productivity in key verticals such as healthcare, long term care, hospitality, retail, manufacturing, warehouse & logistics, etc.
- Deliver high-quality and secure voice communications across the entire enterprise environment
- Leverage investment in legacy or IP/SIP PBX features whether on-premise, in data centers, or even the cloud and enable your mobile workforce to access telephony platform functionality wherever they may be

72-Series

The 72-Series are designed for long-term dependability and increased mobility in specialised working environments. The functionalities of the robust and feature-rich handsets make them a valuable working tool for personnel within industries such as retail and healthcare. Moreover, the flexible menu structure allows the handsets to be customised to specific vertical markets.

BADGER PART NUMBER:

- 2601000** 7202 Handset 1G9, includes battery. Order charger and power supply separately
2611000 7212 Handset 1G9, includes battery. Order charger and power supply separately



72-Series

75-Series

The elegant and robust 75-Series has a large color screen and intuitive user interface making it a valuable working tool and a preferred choice for mobile workers in administrative working environments across various vertical markets.

BADGER PART NUMBER:

- 2621000** 7522 Handset 1G9, includes battery. Order charger and power supply separately
2631000 7532 Handset 1G9, includes battery. Order charger and power supply separately



75-Series

76-Series

The ruggedized 76-Series combines maximum functionality and elegant design with high durability. The IP64 classified handsets are resistant to dirt, dust-proof, and splashing water, and are designed to meet the needs of a mobile workforce in harsh working environments such as car garage / mechanic shops, industrial, logistics, retail, and warehouse.

BADGER PART NUMBER:

- 2641000** 7622 Handset 1G9, includes battery. Order charger and power supply separately
2651000 7642 Handset 1G9, includes battery. Order charger and power supply separately



76-Series

77-Series

The disinfectant-resistant 77-Series combines mobility and hygiene. The application-enabled handsets are supporting Duress/ Panic alarm, running, tilt and no movement notification, tear-off string alarm, as well as man-down functions, designed to enable healthcare personnel to be mobile while still within quick reach in critical situations.

BADGER PART NUMBER:

- 2661000** 7722 Handset 1G9, includes battery. Order charger and power supply separately
2671000 7742 Handset 1G9, includes battery. Order charger and power supply separately



77-Series

Butterfly Series Handsets

The Spectralink Butterfly Series combines high quality and usability with stylish design. The user-friendly handset is designed especially for office environments, and offers the most important features with standard voice communication and messaging. Experience exceptional voice quality without any background noise, echo, or delay and a best-in-class grip due to the sleek and slender design of the handset. Available in black & white to distinguish employee groups or your business' personality. Supported on Skype for Business Server.

BADGER PART NUMBER:

- 2365700** Butterfly Handset White, 1G9
2365701 Butterfly Handset Black, 1G9



7000 Portfolio Belt Clips and Connectors

The Spectralink 7000 Portfolio Belt Clips perfectly fit the 7000 Portfolio Handsets, making it easy to bring your handset with you to work hands free.

BADGER PART NUMBER:

84771926	Belt Clip for 72-, 75-, 76-, 77-Series and Butterfly
02319587	Metal Belt Clip for 75-Series
02319588	Belt Clip with Connector for 75-Series
14132301	Belt Clip Connector for 75-Series
02319597	Belt Clip with Connector for 76-Series
14196100	Belt Clip Connector for 76-Series
02319700	Belt Clip with Connector for 77-Series, cool grey
14196101	Belt Clip Connector for 77-Series
84771933	Belt Clip for 77-Series and Butterfly



Leather Pouches for Spectralink 7000 Portfolio Handsets

The Leather Pouches for Spectralink 7000 Handsets are made of high quality black leather and is available with either a handle or connector that fits the belt clip.

BADGER PART NUMBER:

02319594	Leather Pouch with Connector for Belt Clip for 75-Series
02319595	Leather Pouch with Handle for 75-Series
02319701	Leather pouch with connector for belt clip for 76- and 77-Series
02319702	Leather Pouch with handle for 76- and 77-Series



Lanyard for Spectralink 77-Series Handsets

The Lanyard for Spectralink 77-Series Handsets allows you to carry your Spectralink 7710, 7720, or 7740 Handset around the neck - making it even easier to keep your handset with you when you are on the move. The Lanyard for Spectralink 77-Series Handsets has a breakaway connection for the safety of the user.

BADGER PART NUMBER:

02319599	Handset Lanyard for 77-Series
-----------------	-------------------------------



Single Stand Charger

The Single Charger charges the Battery Pack within the handset. The charging is temperature controlled for optimal battery lifetime. The user has the ability to use all the keys or the speakerphone while the handset is in the charger. The Single Charger also allows for rapid charging handset for the fast-paced work environments.

BADGER PART NUMBER:

84642500	Dual charger for 72-Series
84642472	Charger for 75-Series
84642473	Charger for 75-Series, USB Version
84642601	Power supply for 75-, 76-, and 77-Series
84642488	Charger for 76-Series
84642489	Charger for 76-Series, USB Version
84642493	Charger for 77-Series
84642494	Charger for 77-Series, USB Version
84642601	Power supply for 75-, 76- and 77-Series
84718504	USB Cable for USB Charger
02509400	77-Series Charger Rack
02509503	Power supply for 77-Series Charger Rack, US Version
84718504	USB Cable for USB Charger
84743424	Battery, Lithium ion
02319593	Programming Kit for 75-Handsets, USB version



Soft Cover for the Butterfly Series Handset

The smooth Soft Cover for the Spectralink Butterfly Series ensures protection and greater grip. It is made from soft rubber and perfectly fits the shape of the Spectralink Butterfly Series. Use the Soft Cover to better protect your Spectralink Butterfly Series Handset or to get an even firmer grip.

BADGER PART NUMBER:

02319802	Butterfly Soft Cover, White. Bundle of 10 covers
02319803	Butterfly Soft Cover, Black. Bundle of 10 covers
02319804	Butterfly Soft Cover, Yellow. Bundle of 10 covers
02319806	Butterfly Soft Cover with Belt Clip Connector, White. Bundle of 10 covers
02319807	Butterfly Soft Cover with Belt Clip Connector, Black. Bundle of 10 covers
02319808	Butterfly Soft Cover with Belt Clip Connector, Yellow. Bundle of 10 covers



BUTTERFLY SERIES ACCESSORIES

Belt Clip/Desktop Stand for the Spectralink Butterfly Series

The super smart combined belt clip and desk stand has been specially designed for the Spectralink Butterfly Series Handsets. With the belt clip/desktop stand you only need one accessory to carry and make your Spectralink Butterfly Series Handset stand on your desk. The Belt Clip makes it even easier to bring your handset with you when you are on the move while keeping your hands free for working.

BADGER PART NUMBER:

02319800	Butterfly Belt Clip/Desktop Stand. Bundle of 10 belt clips/desktop stand
84771926	Belt Clip for 74-, 75-, 76-, 77-, Butterfly Series
84771933	Belt Clip for 77-Series and Butterfly

Other Butterfly Accessories

BADGER PART NUMBER:

02509200	Butterfly Programming Kit
84642604	Micro USB Charger and Power Supply



DECT SERVERS

Spectralink IP-DECT Server 400 and Accessories

The Spectralink IP-DECT Server 400 is the ultimate solution for small to medium-sized businesses and can be deployed as a single-cell or a multi-cell solution. The single-cell solution supports 12 users and six simultaneously calls. You can easily upgrade to a multi-cell solution if you need more users or coverage of a larger area or multiple locations.

BADGER PART NUMBER:

02319602	Power Injector
02344501	IP-DECT Server 400, 1G9 version. Incl. 12 users
02337401	IP-DECT Base Station, 1G9 version (PoE - power supply must be ordered separately)
14075500	License for 30 users/12 speech channels
14075510	Lync License for IP-DECT Server 400
14075520	Multi Cell License
14075460	Handset Sharing License
14075480	G.729 License
14075540	License bundle of: 30 users/12 speech channels + Lync License
14075550	License bundle of: 30 users/12 speech channels + Lync + Multi Cell License
14075560	License bundle of: 30 users/12 speech channels + Multi Cell License
14075280	Software Security Package (TLS, SRTP)
14075450	Automatic Alarm Call License
02319507	DECT External Antenna
84642600	Power supply, World wide
14002704	3 Meter Cable for External Antenna
14002706	7.5 Meter cable for External Antenna



Spectralink IP-DECT Server 6500 and Accessories

The Spectralink IP-DECT Server 6500 is an ideal solution for radio coverage over a larger geographical area to equip a larger number of mobile employees with wireless telephony – or both. The modular nature of the Spectralink IP-DECT Server 6500 makes it a scalable, flexible and future-proof solution that can grow with your organization.

BADGER PART NUMBER:

02344400	IP-DECT Media Resource
02350000	IP-DECT Server 6500 in Rack cabinet incl. 30 users and power supply
02351000	Media Resource incl. Rack cabinet for Spectralink IP-DECT Server 6500. Incl. 30 users and power supply
02337401	IP-DECT Base Station, 1G9 version (PoE or power supply)
14075210	User License for Spectralink IP-DECT Server 6000/6500, 150 users
14075220	User License for Spectralink IP-DECT Server 6000/6500, 500 users
14075230	User License for Spectralink IP-DECT Server 6000/6500, 1500 users
14075240	User License for Spectralink IP-DECT Server 6000/6500, up to 4096 users
14075250	Software License for Master Spectralink IP-DECT Server 6000/6500 Redundancy (from software version PCS06A_ or newer)
14075260	Software License for Backup Spectralink IP-DECT Server 6000/6500 Redundancy with ARI Swap License (from software version PCS06A_ or newer)
14075270	Microsoft Lync Interop incl. Spectralink Software Security Package (HTTPS, TLS, SRTP)
14075280	Software Security Package (TLS, SRTP)
14075450	Automatic Alarm Call License
14075460	Handset Sharing License
14075480	G.729 License
84687015	Cable for power supply, 1G9 NA version
02319507	DECT External Antenna
14002704	3 Meter Cable for External Antenna
14002706	7.5 Meter cable for External Antenna
84642600	Power Supply, Worldwide, for IP-DECT Base Station



Spectralink DECT Server 2500 and Accessories

The Spectralink DECT Server 2500 is a flexible add-on solution ideal for small and medium-sized businesses. It is possible to deploy either legacy, SIP VoIP, or a combination of legacy and SIP VoIP telephony.

BADGER PART NUMBER:

02700001	DECT Server 2500, incl. 30 user license. Includes Base Station Interface card and CPU card without link option
02701001	DECT Server 2500, incl. 30 user license. Includes CPU card without link option
02337401	IP-DECT Base Station, 1G9 version (PoE or power supply)
02509210	Programming kit for Repeater and Base Station
02339100	Base Station Interface Card
02339200	Analog card 16 lines
02339220	Analog Card 8 lines
02339400	Cable Link
02339700	Media Resource Card (VoIP Interface Card) for Europe and US only.
02339800	CPU Card with Link Option
02339900	CPU Card without Link Option
14075280	Software Security Package (TLS, SRTP)
14075310	User License for DECT Server 2500, 150 users
14075450	Automatic Alarm Call License
14075460	Handset Sharing License
14075470	TAP Interface License
84769905	Power Supply for DECT Server 2500
84687015	Cable for power supply, 1G9 NA version
02319507	DECT External Antenna
14002704	3 Meter Cable for External Antenna
14002706	7.5 Meter cable for External Antenna
84642600	Power Supply, Worldwide, for IP-DECT Base Station



Spectralink DECT Server 8000 and Accessories

The Spectralink DECT Server 8000 is a scalable solution for medium-sized to large enterprises with support for up to 4,095 wireless users. Up to eight servers with 64 slots for interface cards can be linked together to allow for numerous ways to customize the solution to your organization's needs.

BADGER PART NUMBER:

02509210	Programming kit for Repeater and Base Station
02338901	DECT Server 8000 Rack NA version, includes power supply and cable, incl. 30 user license
02337401	IP-DECT Base Station, 1G9 version (PoE or power supply)
02339400	Cable Link
02339700	Media Resource Card (VoIP Interface Card) for Europe and US only
02339800	CPU Card with Link Option
02339900	CPU Card without Link Option
02339100	Base Station Interface Card
02339200	Analog card 16 lines
02339220	Analog Card 8 lines
02500200	Wall mount for DECT Server 8000
02500300	Termination connectors
14075280	Software Security Package (TLS, SRTP)
14075410	User License for Spectralink DECT Server 8000, up to 150 SIP users
14075420	User License for Spectralink DECT Server 8000, up to 500 SIP users
14075430	User License for Spectralink DECT Server 8000, up to 1500 SIP users
14075440	User License for Spectralink DECT Server 8000, up to 4095 SIP users
14075450	Automatic Alarm Call License
14075460	Handset Sharing License
14075470	TAP Interface License
84687015	Cable for power supply, 1G9 NA version
84769902	Power supply
02319507	DECT External Antenna
14002704	3 Meter Cable for External Antenna
14002706	7.5 Meter cable for External Antenna
84642600	Power Supply, Worldwide, for IP-DECT Base Station



Spectralink Repeaters and Accessories

BADGER PART NUMBER:

02441000	DECT Repeater 2 Ch. With external antenna – Multi Cell 1G9 Version
02441200	DECT Repeater 2 Ch. Without external antenna – Multi Cell, 1G9 version
02338200	DECT Repeater 4 Ch. With external antenna – Multi Cell 1G9 Version
02440200	DECT Repeater 4 Ch. With external antenna – Multi Cell 1G9 Version
	Power supply and external antenna separately
02509210	Programming kit for repeater and DECT base station
84642602	Power supply for repeaters
14002704	3 Meter cable for external antenna
14002706	7.5 Meter cable for External Antenna
02319507	DECT External Antenna

The Spectralink 80-Series

The Spectralink 8000 portfolio operates on converged voice and data Wi-Fi infrastructure to reduce costs and simplify management, while improving employee mobility, responsiveness, and productivity. It also supports a broad range of applications from healthcare to manufacturing to retail. The lightweight handsets are easy to use, durable and feature high quality voice call, backlit displays for dimly lit areas, panic buttons, barcode readers, text messaging, and more.

Nylon Lanyard

Nylon lanyard allows the Spectralink Wireless Telephone to be worn around the neck allowing for instant access. The lanyard features a breakaway connection for the safety of the user.

BADGER PART NUMBER:

WTO101	Quick Disconnect Cord Lanyard
WTO102	Coil Lanyard



Battery Packs

Three lithium-ion battery packs:

- Standard: 4 hours talk time, 80 hours standby, and 2 hour charge time
- Extended: 6 hours talk time, 120 hours standby, and 3 hour charge time
- Ultra-Extended: 8 hours talk time, 160 hours standby, and 4 hour charge time

BADGER PART NUMBER:

BPL300	Ultra-Extended Li-Ion Battery Pack for 60xx/802x/803x Wireless Telephones
---------------	---



Carrying Case

Vinyl or silicone carrying cases fit snugly around the handset. Available with or without clip and comes in a variety of colors.

BADGER PART NUMBER:

WTO350	Clear Silicone Case with Clip, SPLK 6020/8020
WTO360	Blue Silicone Case with Clip, SPLK 6020/8020
WTO450	Clear Silicone Case with Clip, SPLK 8030
WTO460	Blue Silicone Case with Clip, SPLK 8030



Rugged Holster

Black rugged holster with belt clip for Spectralink 60-Series/80-Series Handsets.

43697D PART NUMBER:

WTO320	Black Nylon Holster with Ruggedized Belt Clip
---------------	---



Single Charger

The Single Charger charges the battery pack within the handset. The user has the ability to use all the keys or the speaker-phone while the handset is in the charger. The Single Charger also allows for rapid charging handset for the fast-paced work environments.

BADGER PART NUMBER:

DCD100	Dual Charging Stand for Spectralink 60xx/802x/803x Wireless Telephones Order power supply separately
---------------	--



Quad Charger

The Quad Charger charges four separate spare battery packs simultaneously. There is a single LED for each slot. The Quad Charger allows users to save time and improve productivity in maintaining a supply of charged battery packs in multi-shift environments.

BADGER PART NUMBER:

GCQ100	Quad Charger for 60xx/802x/803x Battery Packs Order power supply (2200-37241-001) separately
---------------	--



Spectralink 84-Series mobile solutions improve productivity and responsiveness for on-site mobile professionals across a wide range of industries, including healthcare, retail, manufacturing and hospitality. Built on open standards, the Spectralink 84-Series transforms the delivery of mobile enterprise applications by bringing the power of thin client and browser technology to front-line professionals in an easy-to-use and easy-to-manage interface.

Additionally, the Spectralink 84-Series supports the industry's broadest range of interfaces to enterprise-grade PBXs, wireless LAN, infrastructures to deliver maximum interoperability with the lowest total cost of ownership in the industry.

Superior Voice Quality

The 84-Series includes Spectralink's market-leading VQO (Voice Quality Optimization), that delivers superior voice quality over in-building, enterprise Wi-Fi networks, ensuring crystal-clear communication every time.

Wireless Infrastructure

Third-party enterprise-grade access points provide unlimited coverage throughout the facility. These access points are certified through the Spectralink Voice Interoperability for Enterprise Wireless (VIEW) program. Wi-Fi Standard QoS is used to manage prioritization of voice packets and provide the required voice quality on the wireless network.

Telephony Interfaces

Spectralink 84-Series handsets are powered by unified communications software which allows full-featured integration with all major SIP call platforms, including Microsoft Lync®. Certified third-party gateways allow integration with traditional enterprise PBXs. Interoperability is fully tested and documented in the Spectralink 84-Series Call Server Matrix.

Application Integration

The embedded XML API and WebKit browser enable real-time, two way communication between wireless handsets and third-party applications.

Handsets

The Spectralink 8440 is the baseline VoWLAN product for vertical markets. It delivers on a fundamental need for enterprise-grade on-site voice mobility. The Spectralink 8452 enhance the customer value proposition with an integrated barcode reading capability.



The 84-Series handsets offer a full breath of call handling features, optional push-to-talk (PPT) and paging, instant messaging and IM support via Microsoft Lync and real time location services (RTLS).

BADGER PART NUMBER:

- 2200-37149-001** Spectralink 8440 with Lync support. North American Handset, BLUE. Order battery and charger separately
- 2200-37150-001** Spectralink 8440 with Lync support. North American Handset, BLACK. Order battery and charger separately
- 2200-37147-001** Spectralink 8440 without Lync support, North American Handset, BLUE. Order battery and charger separately
- 2200-37148-001** Spectralink 8440 without Lync support, North American Handset, BLACK. Order battery and charger separately
- 2200-37290-001** Spectralink 8441 with Lync support, North American Handset, BLACK. Order battery and charger separately
- 2200-37288-001** Spectralink 8441 without Lync support, North American Handset, BLACK. Order battery and charger separately
- 2200-37172-001** Spectralink 8452 with Lync support. North American Handset, BLACK. Order battery and charger separately
- 2200-37173-001** Spectralink 8452 with Lync support. North American Handset, BLUE. Order battery and charger separately
- 2200-37163-001** Spectralink 8452 without Lync support, North American Handset, BLUE. Order battery and charger separately
- 2200-37162-001** Spectralink 8452 without Lync support, North American Handset, BLACK. Order battery and charger separately
- 2200-37294-001** Spectralink 8453 with Lync support, North American Handset, BLACK. Order battery and charger separately
- 2200-37292-001** Spectralink 8453 without Lync support, North American Handset, BLACK. Order battery and charger separately

SPECTRALINK 84-SERIES ACCESSORIES

Battery Packs

There are two easy-access cosmetic battery capacity options:
Standard – for up to 8 hours talk time, 80 hours standby time
Extended – for up to 12 hours talk time, 120 hours standby time

BADGER PART NUMBER:

- 1520-37214-001** Spectralink 84-Series Battery, Standard
1520-37215-001 Spectralink 84-Series Battery, Extended



Clips

Spectralink 84-Series swivel clip is screw-mounted for extra durability.

43697D PART NUMBER:

WTO470

Clip and clip assembly for Spectralink silicone cases



Dual Charger

The Spectralink 84-Series Dual Charger charges the battery pack within a handset along with a separate spare battery pack. There is a single LED for each slot. The handset slot charges first followed by the battery pack slot. The handset will display charging information on the LCD in standby state.

BADGER PART NUMBER:

- 1310-37222-701** Spectralink 84-Series Dual Charger Order power supply (2200-37240-001) separately



Quad Charger

The Quad Charger charges four separate spare battery packs simultaneously. There is a single LED for each slot. Table top or wall mount options exist. The Quad Charger allows users to save time and improve productivity in maintaining a supply of charged battery packs in multi-shift environments.

BADGER PART NUMBER:

- 1310-37224-701** Spectralink 84-Series Quad Charger Order power supply (2200-37241-001) separately



Multi-Charger

The Spectralink 84-Series 12-Bay Multi-Charger is an assembly of three Spectralink 84-Series Quad Chargers on a rack that can be mounted on the wall or on a desk. The unit charges up to 12 batteries simultaneously. It is ideally suited for shift-worker environments, where fully charged batteries are needed for each shift.

BADGER PART NUMBER:

- 2200-37287-711** 12-bay multi-charger Includes power supply and line cord



84-Series Carrying Case

Vinyl or silicone carrying cases fit snugly around the handset providing added protection. They are available with or without clip and come in a variety of colors.

BADGER PART NUMBER:

- 2310-37180-001** Clear Silicone Case with Belt Clip and Clip Assembly, Spectralink 8440/41
2310-37180-002 Blue Silicone Case with Belt Clip and Clip Assembly, Spectralink 8440/41
2310-37190-001 Clear Silicone Case with Belt Clip and Clip Assembly, Spectralink 8452/53
2310-37191-001 Blue Silicone Case with Belt Clip and Clip Assembly, Spectralink 8452/53



Installation, Configuration and Provisioning Tools

BADGER PART NUMBER:

- 2200-37296-001** Spectralink 84-Series Installation and Configuration (SLIC) tool for Spectralink 84 and 87-Series handset provisioning. Includes power supply.
2310-37244-001 Spectralink 84-Series USB Provisioning Cable



Chargers, Docks, Batteries and Power Supply

BADGER PART NUMBER:

- 1310-37222-701** Spectralink 84-Series Dual Charger. Order power supply separately.
1310-37224-701 Spectralink 84-Series Quad Charger. Order power supply separately.
2200-37240-001 Universal power supply for 60/80/84-Series Single & Dual Chargers
2200-37241-001 Universal Power supply for 60/80/84-Series Quad Chargers
2200-37287-711 Spectralink 84-Series 12-bay multi-charger. Includes power supply and NA line cord.
1520-37214-001 Spectralink 84-Series Battery, Standard
1520-37215-001 Spectralink 84-Series Battery, Extended
2200-37036-701 Spectralink 84-Series Quad Charger Kit. Includes 1x 84-Series Quad Charger (1310-37224-701), and 1x universal power supply (2200-37241-001)
2200-37234-701 Spectralink 84-Series Dual Charger Kit, includes 1x 84-Series Dual Charger (1310-37222-701), and 1 universal power supply (2200-37240-001)



Belt Clips and Carrying Options

BADGER PART NUMBER:

- 2310-37180-001** Clear silicone case with belt clip and clip assembly, Spectralink 8440/41
2310-37180-002 Blue silicone case with belt clip and clip assembly, Spectralink 8440/41
2310-37190-001 Clear silicone case with belt clip and clip assembly, Spectralink 8452/53
2310-37191-001 Blue silicone case with belt clip and clip assembly, Spectralink 8452/53
2215-36829-001 Belt Clip Assembly, includes 1x WTO205 Belt Clip, 1x screw, 1x button
WTO470 Clip and clip assembly for Spectralink silicone cases



*Device not included

87-Series

Built on the industry-standard Android™ operating system, 87-Series is a mobile solution characterized by intuitive smartphone features and usability combined with the quality, durability, and reliability essential for mobile workers. 87-Series further enhances the customer value proposition with two enhanced standards-based application interfaces, a high-performance barcode scanner and an industrial-grade accelerometer. Spectralink 87-Series includes Spectralink's Voice Quality Optimization that delivers superior voice quality over in-building, enterprise Wi-Fi networks, ensuring crystal-clear communication every time.

- Enables mobile workers throughout the workplace to be reached immediately and reliably via voice, texts or other alerts
- Instantly familiar with smartphone-like features you can use, right out-of-the-box
- Leverages a powerful mobile applications platform that integrates with Android™ or XML solutions for improved workflow
- Purpose-built with unrivaled durability, longevity and support to protect your investment
- Enterprise-level security and privacy as well as over-the-air management and update capabilities
- Interoperable with your existing business applications WLAN infrastructure and telephone system



Processor and Memory

- ARM Cortex-A9 dual core, 1 GHz processor
- 1 GB DRAM, 8 GB flash

Operating System

- Android Lollipop
- Protected from jail-breaking and rooting
- Display and Touchscreen
- 4.3 In. TFT, 800 x 480 pixels
- 16 million color palette

BADGER PART NUMBER:

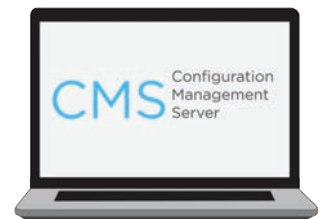
- PBL87420** Spectralink PIVOT:S 8742, Blue, Order battery and charger separately
- PBK87420** Spectralink PIVOT:S 8742, Black, Order battery and charger separately
- PBK87530** Spectralink 8753 (2D barcode scanner), Black. Order battery and charger separately
- PBL87530** Spectralink 8753, Blue. Order battery and charger separately

SPECTRALINK PIVOT 87-SERIES ACCESSORIES

Feature Licenses and Device Management Solution

BADGER PART NUMBER:

- AQN80000** Spectralink Quick Network Connector (QNC) Device for initial provisioning for 87-series.
- FCM87210** Spectralink PIVOT CMS R2.0 License, 10 handsets
- FCM87215** Spectralink PIVOT CMS R2.0 License, 25 handsets
- FCM87220** Spectralink PIVOT CMS R2.0 License, 100 handsets
- FCM87230** Spectralink PIVOT CMS R2.0 License, 250 handsets
- FCM87240** Spectralink PIVOT CMS R2.0 License, 500 handsets
- FCM87250** Spectralink PIVOT CMS R2.0 License, 1000 handsets
- FCM87335** Spectralink PIVOT License, Camera Barcode Scanning, 1 handset
- FCM87340** Spectralink PIVOT License, Camera Barcode Scanning, 10 handsets
- FCM87345** Spectralink PIVOT License, Camera Barcode Scanning, 25 handsets
- FCM87350** Spectralink PIVOT License, Camera Barcode Scanning, 100 handsets
- FCM87360** Spectralink PIVOT License, Camera Barcode Scanning, 250 handsets
- FCM87370** Spectralink PIVOT License, Camera Barcode Scanning, 500 handsets



Battery and Charging Accessories

BADGER PART NUMBER:

- BBK87100** Spectralink standard battery, Black
- BBK87120** Spectralink PIVOT:S 8742 standard battery, Black
- CBK87300** Spectralink Combo Quad charger, Black (Order power supply and batteries separately)
- EUN87200** Spectralink USB universal power supply
- EQD87200** Spectralink quad charger power supply
- KNA87400** Upgrade Kit for Spectralink Multi-Charger, North America – Includes multi-unit Power supply, NA line cord and daisy chain cables. Purchase quad chargers and batteries separately.
- KNA87422** Spectralink PIVOT:S Multi-Charger Bundle, NA, includes 3 quad chargers, power supply and 2 daisy chain cables (Order batteries separately)
- ABC87401** Spectralink Multi-Charger Base is used to connect up to four Triple Battery Chargers CBT87301 or Desktop Chargers KCA87001



Lanyards, Bumpers and Clip Assemblies

Nylon lanyard allows the Spectralink Wireless Telephone to be worn around the neck allowing for instant access. The lanyard features a breakaway connection for the safety of the user.

BADGER PART NUMBER:

- ALS87302** Spectralink Shoulder Lanyard, black
- ACA87311** Spectralink Silicone bumper, black
- ACL87306** Spectralink clip assembly, black



View our searchable electronic catalog at: www.badgercommunications.com

VCS754**ErisStation® SIP Conference Phone with Four Wireless Mics**

Whether you're already running your business with a SIP phone system or getting ready to make the move, you can extend your coverage all the way to the conference room with the VTech ErisStation SIP conference phone. It comes with four removable DECT 6.0 microphones that feature Orbitlink Wireless Technology™. Unlike traditional conference phones, ErisStation lets everyone spread out and speak without having to gather around the phone or raise their voices. Advanced audio features, such as acoustic echo cancellation, automatic gain control and dynamic noise reduction, deliver premium, interference-free sound quality. Plus, integrated design makes it easy to charge the microphones right in the base and keep everything together.

- Full-duplex speakerphone in base.
- Support for up to three SIP lines/accounts
- User-friendly interface, large backlit display, three soft keys and navigational pad
- USB connection for using a PC based softphone or speaker.
- G.722 wideband codec support for HD audio
- Includes 2 fixed microphones and 4 DECT 6.0 wireless microphones with Orbitlink Wireless Technology™
- Up to 8 hours of talk time for each microphone
- Up to 70 hours of standby time for each microphone
- Magnetic charging bays in the base
- Two-year warranty
- Automatic gain control, digital mixing & volume control: 10 levels
- 3-way local conference
- N-way network conference
- Local phonebook up to 200 entries
- Call history up to 200 entries

BADGER PART NUMBER:

80-9754-00 ErisStation® SIP Conference Phone with four Wireless Microphones

80-9755-00 Replacement Microphone for VCS754



80-9754-00

80-9755-00

* Use of Caller ID features requires subscription from your telephone service provider.

VCS752**ErisStation® SIP Conference Phone with Two Wireless Mics**

Whether you run a small business from a home office, or collaborate in a large conference room, the VTech ErisStation SIP conference phone uses Bluetooth® and DECT 6.0 technology for frustration-free calls and meetings. The system serves as a personal workspace device, while replacing the need for a separate deskset and conference phone. Connect your cell phone, or pair a Bluetooth or DECT headset with the speakerphone for hands-free and/or private calls. The VCS752 can go beyond the office, and work in any-size conference room. The system—with one fixed built-in mic and two wireless mics with Orbitlink Wireless Technology™—can support nine or more active participants in a small conference room. Or, it can easily scale up with the accessory VCS850 SIP DECT Expansion Wireless Speakerphone to handle 27 or more active participants. Now, you can clearly hear, and spread out and speak without shouting.

- Full-duplex speakerphone in base
- Up to 12 hours of talk time per wireless microphone
- Up to 70 hours of standby time per wireless microphone
- Built-in wireless microphone charging bays in base
- Bluetooth connectivity for headset and mobile devices
- DECT 6.0 wireless microphones with Orbitlink Wireless Technology
- Supports up to 3 SIP account registrations
- 10 ring tones/melodies; 10 ring levels
- Local phonebook up to 200 entries
- 3-way local conference
- N-way network conference
- Call barring/blocking (block anonymous/ blacklist)

BADGER PART NUMBER:

80-9783-00 VCS752 ErisStation® SIP Conference Phone with Two Wireless Mics

80-9704-00 Replacement Microphone for VCS752



80-9783-00

80-9704-00

VCS704

ErisStation® Conference Phone with Four Wireless Mics

With the VTech ErisStation™, everyone can get in on the conversation—whether they're at the conference table or not. It comes with four, removable DECT 6.0 microphones featuring Orbitlink Wireless Technology™. Meeting participants can spread out and speak without having to raise their voices, regardless of conference room size. Advanced audio features like acoustic echo cancellation, automatic gain control and dynamic noise reduction ensure premium, interference-free sound quality, improving conferencing for both sides of the conversation. Plus, integrated design makes it easy to charge the microphones right in the base and keep everything together.

- Full-duplex speakerphone in base
- Includes 2 fixed microphones and 4 DECT 6.0 wireless microphones with Orbitlink Wireless Technology™
- Up to 8 hours of talk time per wireless microphone
- Up to 70 hours of standby time per wireless microphone
- Built-in wireless microphone charging bays in base
- Operable in small, medium and large rooms
- 2-year standard warranty
- Automatic gain control
- 2-line backlit display with date and time
- Wireless microphone battery low indicator; flashing LED
- Wireless microphone auto power off; when base powered off
- Connects to/supports one analog line; POTS interface
- Connection to existing PBX or IP-PBX systems requires an Analog line interface adapter with RJ-11 connector (NOT INCLUDED)
- 10 ring tones/melodies; 6 ring levels
- Eco mode (talk mode)
- 10 speed dial entries
- Redial/last number redial
- Pre-dialing with editing
- Mute indicator; red LED on base unit and wireless microphones
- Active call indicator: green LED on base unit and wireless microphones
- 50 CID log entry (type 1 CID)*
- 50 name/number phone book entries
- Alpha phone book search
- Number saving from CID log to phonebook or speed dial
- Fast adaptive feedback control
- Comfort noise injection
- Enhanced noise reduction/ Dynamic noise reduction (DNR)
- Replacement microphone: VCS704-WM (80-9576-00)

BADGER PART NUMBER:

80-9403-00 ErisStation Conference Phone with Four Wireless Mics

80-9576-00 Replacement Microphone for VCS704



VCS702

ErisStation® Conference Phone with Two Wireless Mics

With the VTech ErisStation® conference phone, everyone can get in on the conversation. It comes with two, removable DECT 6.0 microphones featuring Orbitlink Wireless Technology™, making it perfect for small to medium-sized conference rooms. Meeting participants can spread out and speak without having to raise their voices, wherever they are in the room. Advanced audio features like acoustic echo cancellation, automatic gain control and dynamic noise reduction ensure premium, interference-free sound quality, improving conferencing for both sides of the conversation. Plus, integrated design makes it easy to charge the microphones right in the base and keep everything together.

- Full-duplex speakerphone in base
- Up to 12 hours talk time per wireless microphone
- Up to 70 hours standby time per wireless microphone
- 2-year standard warranty
- Built-in wireless microphone charging bays in base
- Digital mixing technology
- Acoustic echo cancellation technology
- Automatic gain control
- Operable in small and medium-sized rooms
- 2-line backlit display with date and time
- Connects to/supports one analog line; POTS interface
- Wireless microphone battery low indicator – flashing LED
- Eco mode (talk mode)
- 10 ring tones/melodies; 6 ring levels

BADGER PART NUMBER:

80-9398-00 ErisStation® Conference Phone with Two Wireless Mics

80-9704-00 Replacement Microphone for VCS702



Unify all network communications - voice, data and internet - with VTech ErisTerminal SIP phones. Power over Ethernet (PoE), dual Ethernet ports and auto-provisioning help cut down on installation time. Plus, your customers can relax knowing they made the right choice with products that are competitively priced, come with free U.S. call-center support and feature an industry-leading warranty. If mobility is a challenge, the ErisTerminal product portfolio includes a cordless base station/handset and a DECT 6.0 cordless headset to keep business moving forward. All ErisTerminal SIP phones feature a 3-year warranty with advanced product replacement with new (not refurbished) phones.

VSP715

ErisTerminal SIP Deskset

- Support for up to 2 SIP lines/accounts with 2 keys that provide programmable functions
- Dual Ethernet ports, 10/100 Mbps
- 4-way navigational pad
- Automatic call distribution (ACD)
- Full-duplex speakerphone
- Message waiting LED indicator
- AC adapter optional
- 3-year warranty



80-9953-00

BADGER PART NUMBER:

80-9953-00 VSP715 ErisTerminal SIP Deskset
80-0241-00 VSP715-ADPT (optional AC adapter)

VSP725

ErisTerminal SIP Deskset

- Support for up to 3 SIP lines/accounts with 12 keys that provide 24 programmable functions
- Dual Ethernet ports, 10/100 Mbps
- PoE support
- Advanced call handling
- Shared call appearances
- Pair with VSP601 cordless handset, VSP505 cordless headset, or VH6102 cordless headset for hands-free mobility
- AC adapter included
- 3-year warranty



80-9311-00

BADGER PART NUMBER:

80-9311-00 VSP725 ErisTerminal SIP Deskset

VSP735

ErisTerminal SIP Deskset

- Support for up to 5 SIP lines/accounts with 16 keys that provide 32 programmable functions
- Dual Ethernet ports, GigE
- PoE support
- Shared call appearances
- Pair with VSP601 cordless handset, VSP505 cordless headset, or VH6102 cordless headset for hands-free mobility
- AC adapter included
- 3-year warranty



80-8475-00

BADGER PART NUMBER:

80-8475-00 VSP735 ErisTerminal SIP Deskset

VSP726

ErisTerminal[®] SIP Deskset

- Supports up to 4 SIP account registrations
- Local phonebook up to 1000 entries
- Phonebook import/export
- LDAP/BroadSoft remote phonebook
- Call history up to 200 entries
- Shared Call Appearance (SCA)/Bridged-Line Appearance (BLA)
- Do Not Disturb (DND)
- 3-year warranty



80-0048-00

BADGER PART NUMBER:

80-0048-00 VSP726 ErisTerminal SIP Deskset
80-0369-00 VSP-PWR02 (optional AC adapter)

VSP736

ErisTerminal[®] SIP Deskset

- Supports up to 6 SIP account registrations
- Local phonebook up to 1000 entries
- Phonebook import/export
- LDAP/BroadSoft remote phonebook
- Call history up to 200 entries
- Shared Call Appearance (SCA)/Bridged-Line Appearance (BLA)
- Do Not Disturb (DND)
- 3-year warranty



80-9927-00

BADGER PART NUMBER:

80-9927-00 VSP736 ErisTerminal SIP Deskset
80-0369-00 VSP-PWR02 (optional AC adapter)

VSP600

ErisTerminal SIP DECT Base Station and Cordless Handset

- Register up to 6 cordless handsets
- Orbitlink Wireless Technology[™]
- Support for up to 6 SIP lines/4 concurrent calls
- LED status indicator
- 3-year warranty

BADGER PART NUMBER:

80-9354-00



80-9354-00



ERISSTATION® CONFERENCE PHONES WITH WIRELESS MICS

VCS850

ErisStation® SIP DECT Expansion Wireless Speakerphone

When you need to increase the number of active participants on a call, just add up to three expansion wireless speakerphones to the VCS752 ErisStation SIP Conference Phone. No wires or complicated cords required. Ideal for medium to larger conference rooms, each expansion wireless speakerphone includes two built-in mics, and can be placed around the table. Because of DECT 6.0 technology, participants can spread out and easily be heard without shouting or moving closer to the mics. The full-duplex speakerphones ensure that participants on both ends of the call can clearly hear. Plus, the speakerphone features up to 12 hours of talk time to support long meetings.

- Full-duplex speakerphone in base
- Includes two fixed microphones
- DECT 6.0 wireless connection to VCS752 base
- Pair up to 3 expansion speakerphones per VCS752 base
- Up to 12 hours of wireless talk time
- Up to 70 hours of standby time
- Global and local mute options with indicator
- 10 ring tones/melodies; 6 ring levels
- Battery-low indicator
- Eco mode (Talk mode)
- 2-year warranty
- Accessory expansion wireless speakerphone only - requires VCS752 to operate

BADGER PART NUMBER:

VCS850



VCS850

ERISBUSINESSSYSTEM® FOUR-LINE OFFICE PHONE

This 4-line, expandable system keeps up with your growing needs but also keeps it simple—no need for complicated wiring or expensive installation technicians. It's a low-maintenance way to manage your calls and keep your business thriving. ErisBusinessSystem phones include a 2-year standard warranty.

UP416

ErisBusinessSystem Main Console

- Digital answering system; supports up to 15 UP406 extension desksets
- Expandable up to 16 stations (1 console, 15 desksets)
- 4-line operation
- Auto attendant

BADGER PART NUMBER:

80-9598-00



80-9598-00

UP406

ErisBusinessSystem Extension Deskset

- Component of ErisBusinessSystem
- Requires a UP416 main console to operate
- 4-line operation
- Private mailbox (max 20 minutes of recording time)
- Full-duplex speakerphone

BADGER PART NUMBER:

80-9599-00



80-9599-00

UP407

ErisBusinessSystem Accessory Cordless Handset

- Requires a UP416 main console or UP406 extension deskset to operate.
(Each UP416 and UP406 can support only 1 UP407 Cordless Handset.)
- Cordless mobility
- 4-line operation
- Intercom

BADGER PART NUMBER:

80-9600-00



80-9600-00



ONLINE STORE we've got you covered

www.badgercommunications.com

FREE STANDARD SHIPPING

*for all orders that qualify for standard ground shipping. some exclusions apply.

QUOTES

Easily view, create and modify quotes inside our online store. When you're ready you can convert to an order with the click of a button.

WHAT'S IN STOCK?

Our stock quantities are clearly displayed in real-time.

ORDER HISTORY

View the order history for your entire company from the ORDER HISTORY tab on our Online Store.

715-672-4200

The Badger Communications team is available Monday-Friday 8am-4:30pm.

Technical and Design Support

The Badger Support Team will help you understand which hardware and software your Avaya systems need to ensure your customer has the features they need.

Save time and headache on your next install by having the Badger team pre-program your next Avaya system.



TRAINING

Choose our introductory classes to refresh or take your first steps into the world of Avaya and IP Office.

You can even sell an IP Office and program it during training at Badger.



ERISTerminal® SIP PHONES

VSP505

ErisTerminal SIP DECT Cordless Headset

- Accessory headset only - requires a VSP725, VSP726, VSP735 or VSP736 SIP DECT deskset to operate
- Up to 500 feet in range
- Noise-canceling microphone
- Multiple wearing styles
- 1-year warranty

BADGER PART NUMBER:

80-9659-00



80-9659-00

VH6102

ErisTerminal SIP DECT Cordless Headset

- Accessory headset only - requires a VSP725, VSP726, VSP735 or VSP736 SIP DECT deskset to operate
- Up to 500 feet of range
- Noise-canceling microphone
- Mute, flash and volume controls
- 1-year warranty

BADGER PART NUMBER:

80-0817-00



80-0817-00

VSP601

ErisTerminal SIP DECT Cordless Handset

- Accessory handset only - requires a VSP600 SIP DECT Base Station to operate
- Orbitlink Wireless Technology(TM)
- 7 days standby / 7 hours talk time
- Intercom
- 3-year warranty

BADGER PART NUMBER:

80-9355-00



80-9355-00

VSP608

ErisTerminal SIP DECT Cordless Deskset

- 7 hours talk time
- Orbitlink Wireless Technology™
- 3-year warranty
- Intercom

BADGER PART NUMBER:

80-0376-00



80-0376-00

VSP-PWR02

ErisTerminal AC Adapter 5V 1.5A

- AC adapter for the VSP726 / VSP736

BADGER PART NUMBER:

80-0369-00



80-0369-00

Wi-Fi ROUTERS

VNT832

VTech 4 Port N300 Wi-Fi Router

Connect your home office or small business with the VTech 4 Port N300 Wi-Fi Router. Its ultra-fast 300 Mbps wireless speed allows you to stream HD video or surf the internet over one local network—without interruption. Plus, advanced wireless security, like a built-in firewall, secures your internet traffic and guards you against viruses.

- Wireless access control (MAC based)
- Radio power selection
- WAN modes (dynamic, static, PPPoE, IPoE, bridge)
- DHCP server, relay, off
- MAC address reservation
- 2-year standard warranty

BADGER PART NUMBER:

80-0554-00



80-0554-00

VNT846

VTech AC1600 Dual Band Gigabit Wi-Fi Router

The VTech AC1600 Dual Band Gigabit Wi-Fi Router meets the digital demands of your home or small business. Beamforming technology increases Wi-Fi range and reduces deadspot interference. Thanks to 300+1300 Mbps wireless speed, your family or employees can stream HD video, transfer large files or make video conference calls from multiple devices at the same time. Plus, advanced wireless security, like a built-in firewall, secures your internet traffic and guards you against viruses.

- Wireless access control (MAC based)
- WAN modes (dynamic, static, PPPoE, IPoE, bridge)
- 2-year standard warranty

BADGER PART NUMBER:

80-0551-00



80-0551-00

ErisStation®, ErisTerminal®, ErisBusinessSystem® and Orbitlink Wireless Technology™ are trademarks of VTech Communications, Inc.

VTech® is a registered trademark of VTech Holdings, Ltd.

View our searchable electronic catalog at: www.badgercommunications.com